

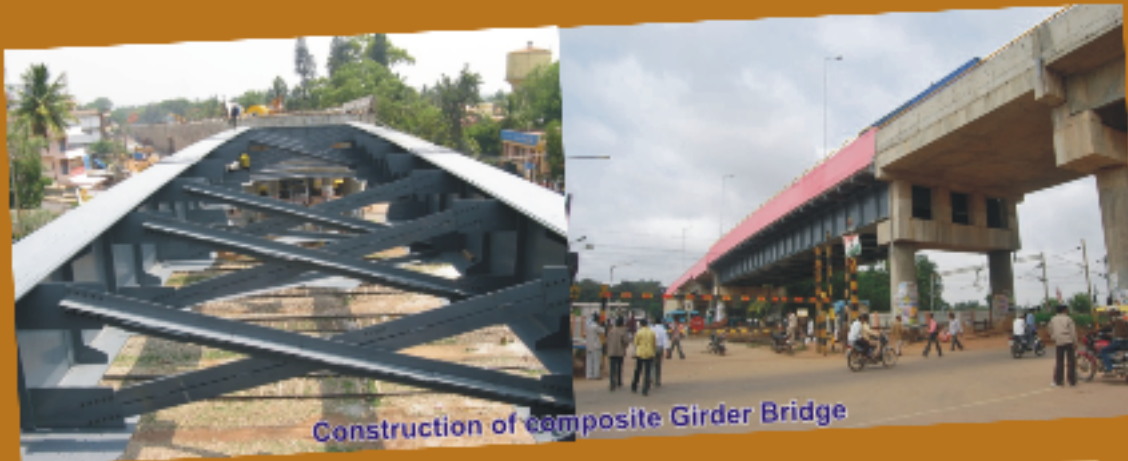
# IRICEN JOURNAL OF CIVIL ENGINEERING



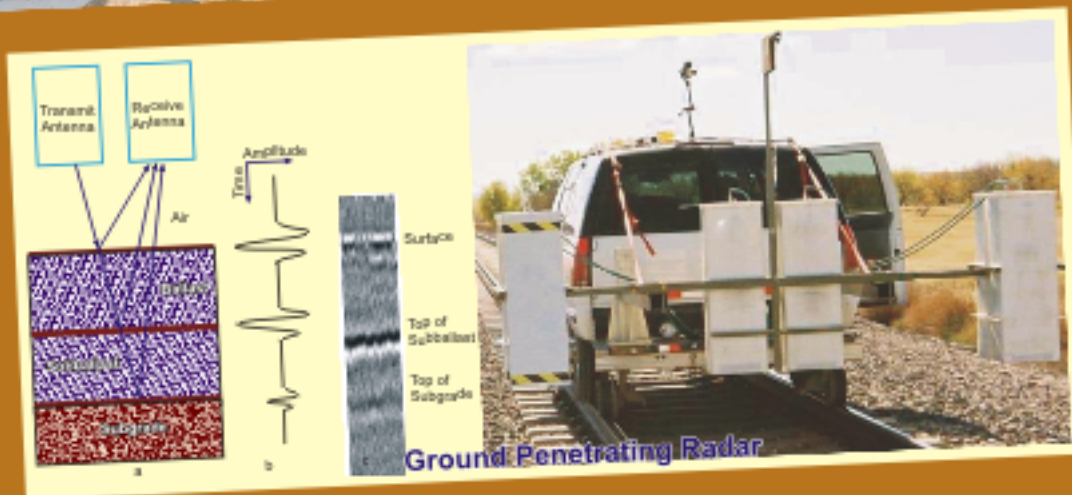
“Beam as beacon of knowledge”

VOLUME 4, NO. 1 DECEMBER 2010

www.ircen.gov.in



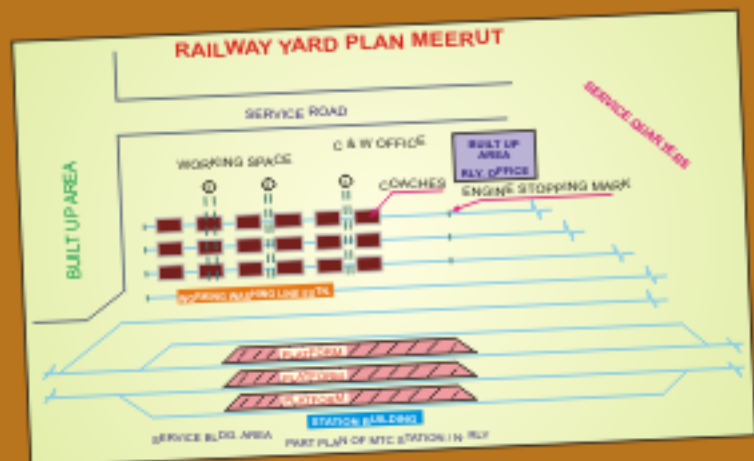
Construction of composite Girder Bridge



Ground Penetrating Radar



Renewal of Spike killed PRC



Indian Railways Institute of Civil Engineering, Pune

An International Seminar  
On  
**"Rail Wheel Interaction in the context of heavy axle loading"**  
&  
**"Mechanisation in construction of track"**

Organised by  
**Institution of Permanent Way Engineers (India)**

Date  
20<sup>th</sup> & 21<sup>th</sup> January 2011  
at  
**Bangalore**

The themes of seminar are :

1. Damage to rails & wheels in the context of heavy axle loads & improvement in the design of track/rolling stock.
2. Improved maintenance practices in the context of heavy axle load.
3. Methodology & equipments for construction of formation, sub-grade and handling of ballast for improved quality and speed of construction.



**IRICEN** Wishes...

**Happy  
New Year  
2011**

to all its Readers

**IRICEN JOURNAL OF CIVIL  
ENGINEERING**

