

LENGTH OF RAILS FOR 1 IN 12 SCISSORS CROSSOVERS  
4725 mm TRACK CENTRES WITH CURVED SWITCHES B. G.

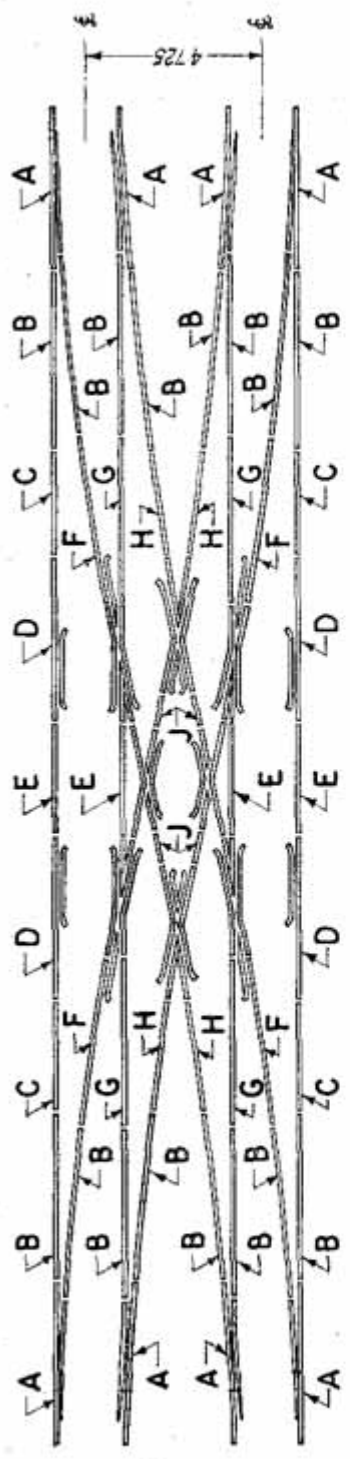
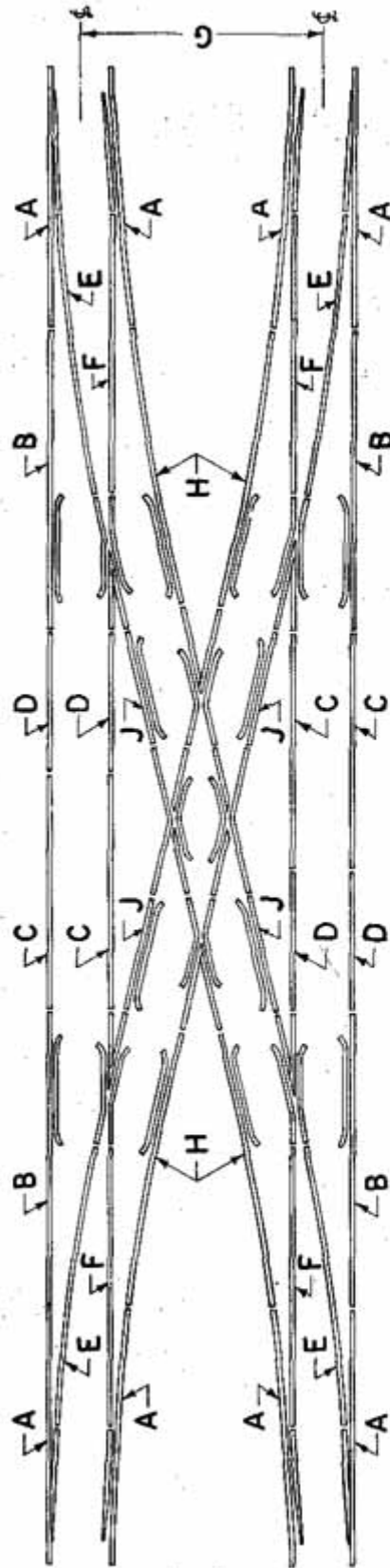


TABLE OF RAIL LENGTHS

RAIL SECTION	ASSEMBLY ORG. N <sup>o</sup>	D I M E N S I O N S (mm)									
		A	B	C	D	E	F	G	H	J	
52 kg	TA 20226	11000	12000	6916	11000	8726	12468	12423	9203	3245	
90 R.	TA 20235	11000	12000	6897	11000	8764	12448	12402	9213	3242	

**LENGTH OF RAILS FOR 1 IN 8½ SCISSORS CROSSOVERS**

**4420<sup>mm</sup> AND 4265<sup>mm</sup> TRACK CENTRES M.G.**



**TABLE OF RAIL LENGTHS**

RAIL SECTION	ASSEMBLY DRG: NR	TRACK CENTRES G	D I M E N S I O N S (in mm)									
			A	B	C	D	E	F	H	J		
75 R.	TA 20434	4420	9000	10600	9000	5310	9887	9845	10662	4844		
60 R.	TA 20430		9000	10594	9000	5324	9870	9828	10656	4854		
75 R.	TA 20484	4265	9000	10611	8346	4626	9887	9845	10000	4181		
60 R.	TA 20442		9000	10594	9000	4006	9870	9828	9993	4191		

LENGTH OF RAILS FOR 1 IN 8 1/2 SCISSORS CROSSOVERS  
4420 mm TRACK CENTRES WITH CURVED SWITCHES M.G.

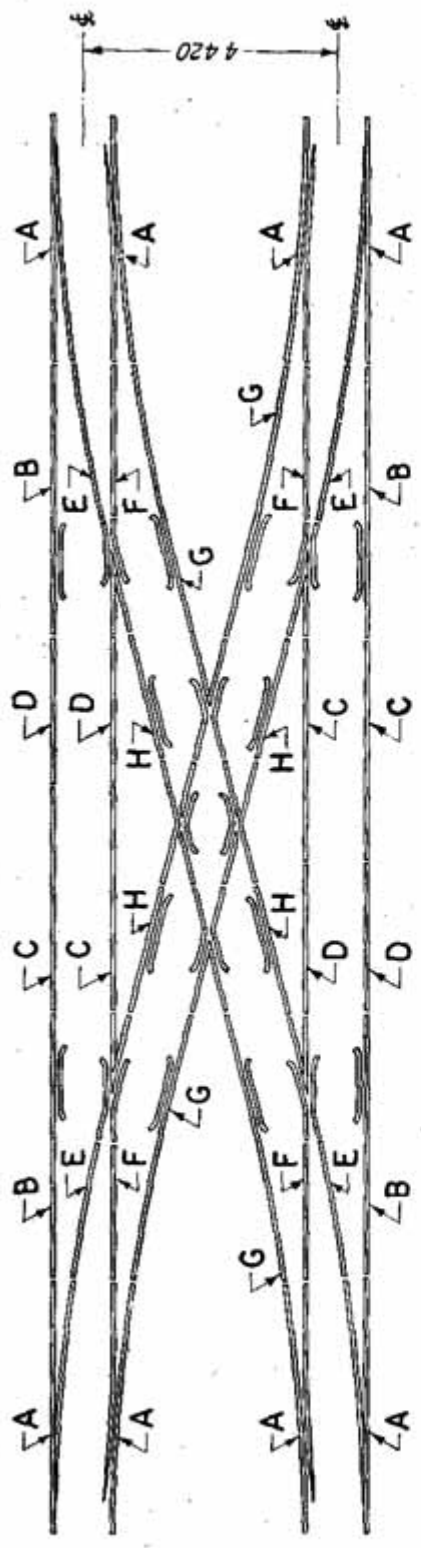


TABLE OF RAIL LENGTHS

RAIL SECTION	ASSEMBLY DRG. NO.	D I M E N S I O N S							
		A	B	C	D	E	F	G	H
75 R.	TA 20-468	10000	9611	9000	5288	4838	4757	9663	4844

LENGTH OF RAILS FOR 1 IN 12 SCISSORS CROSSOVERS  
4420 mm TRACK CENTRES M.G.

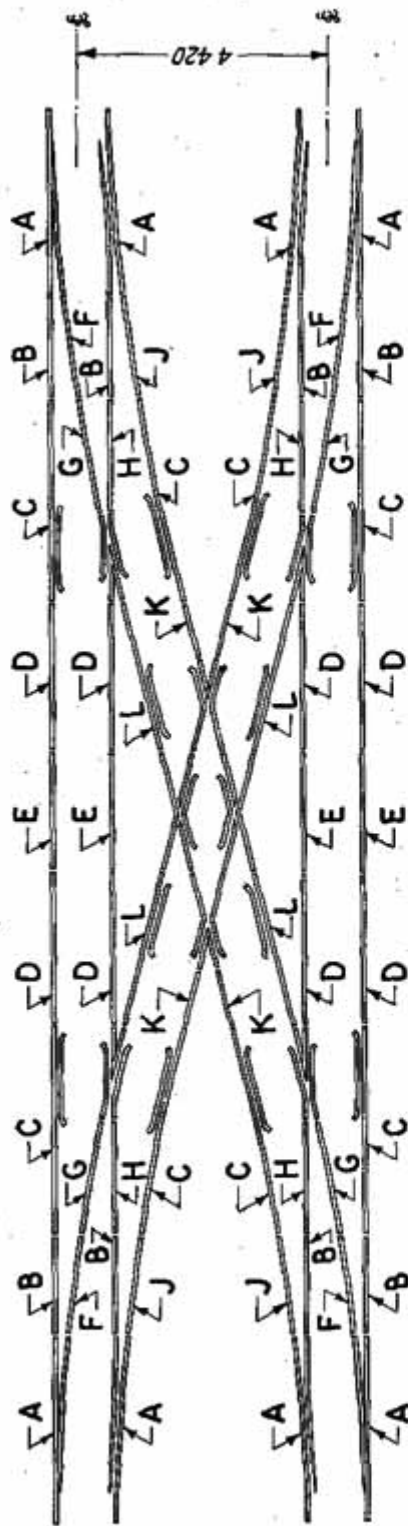


TABLE OF RAIL LENGTHS

RAIL SECTION	ASSEMBLY DRG:NR	DIMENSIONS (mm)										
		A	B	C	D	E	F	G	H	J	K	L
75R.	TA 20476	10000	5441	11000	7931	6824	5458	6200	6190	5480	3002	7965
60R.	TA 20438	10000	5418	11000	9000	4732	5435	6200	6190	5341	3141	9000



LENGTH OF RAILS FOR 1 IN 12 SCISSORS CROSSOVERS  
4420<sup>mm</sup> TRACK CENTRES WITH PARTLY CURVED SWITCHES M.G.

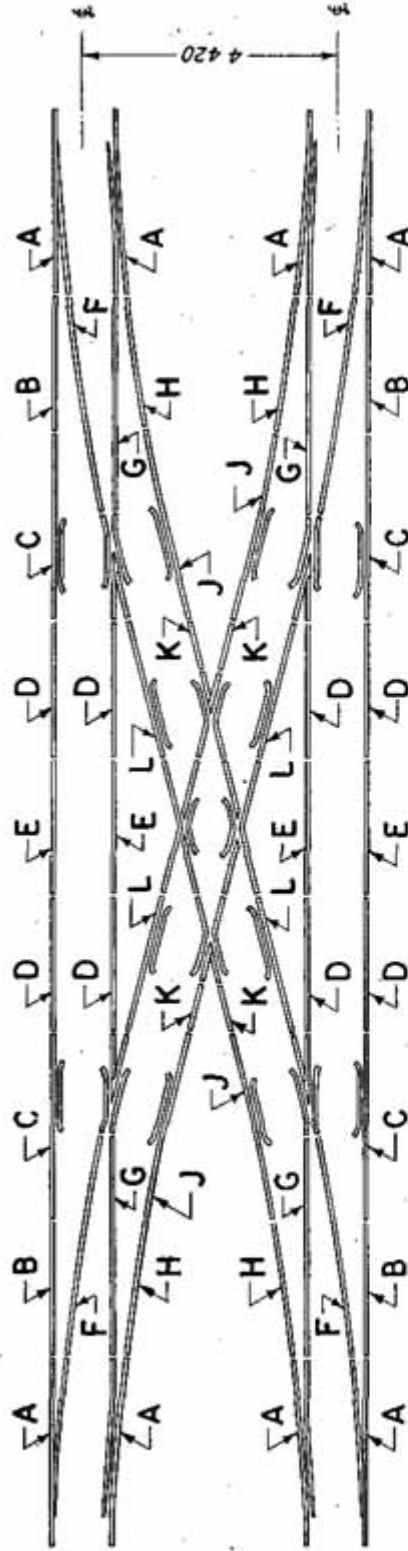


TABLE OF RAIL LENGTHS

RAIL SECTION	ASSEMBLY DRG. NO.	D I M E N S I O N S										
		A	B	C	D	E	F	G	H	J	K	L
75 R.	TA 20486	10000	6642	9799	7931	6824	11696	11637	6588	9893	3002	7965

LENGTH OF RAILS FOR 1 IN 12 SCISSORS CROSSOVERS

4265 mm TRACK CENTRES M.G.

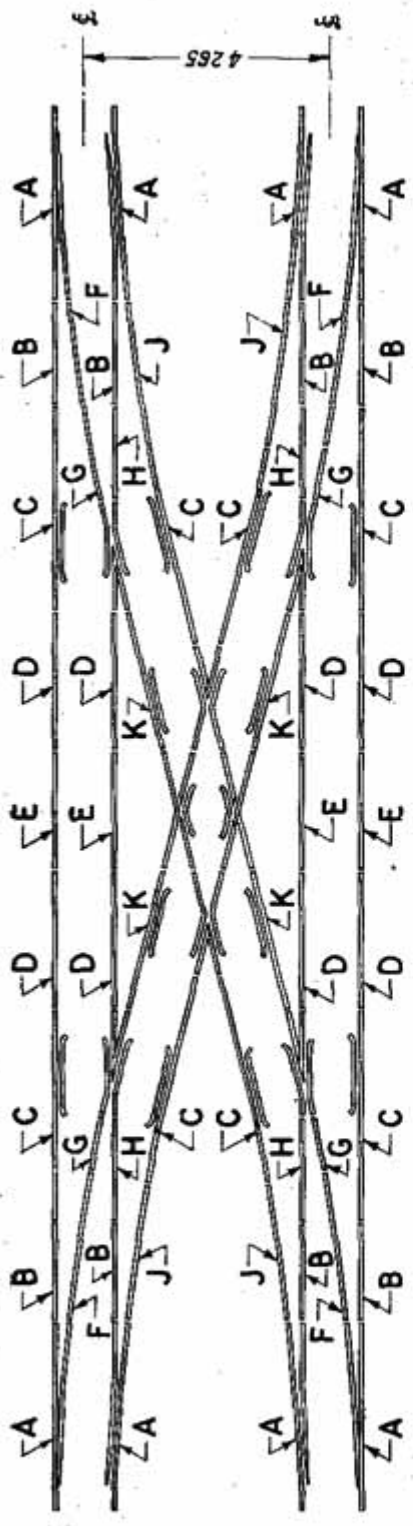


TABLE OF RAIL LENGTHS

RAIL SECTION	ASSEMBLY DRG: NR	D I M E N S I O N S (mm)									
		A	B	C	D	E	F	G	H	J	K
75R.	TA 20480	10000	5441	11000	7000	6826	7568	4090	6190	7555	7032

LENGTH OF RAILS FOR 1 IN 12 SCISSORS CROSSOVERS  
4265mm TRACK CENTRES WITH PARTLY CURVED SWITCHES M.G.

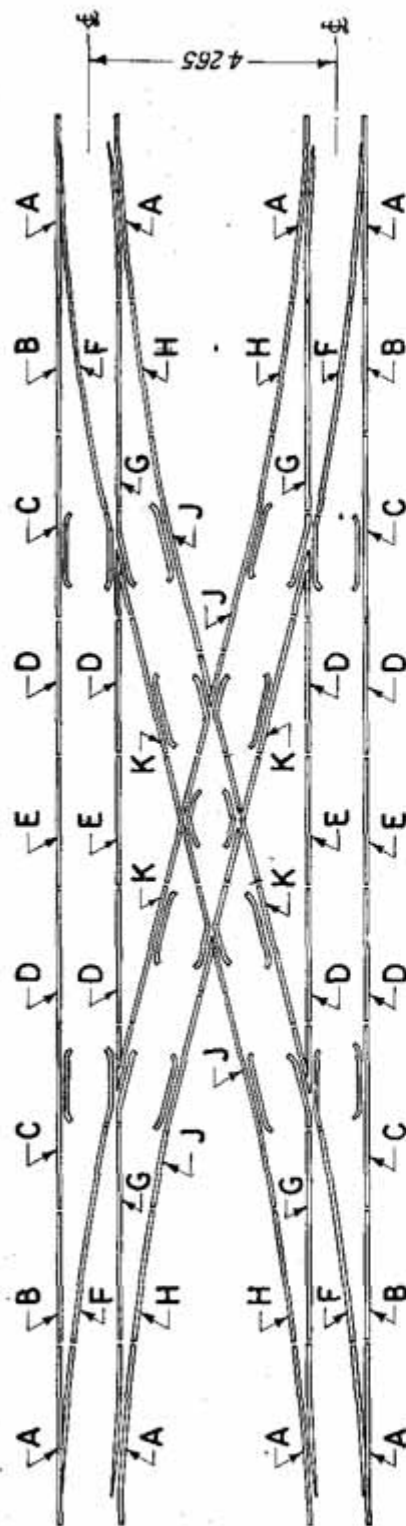
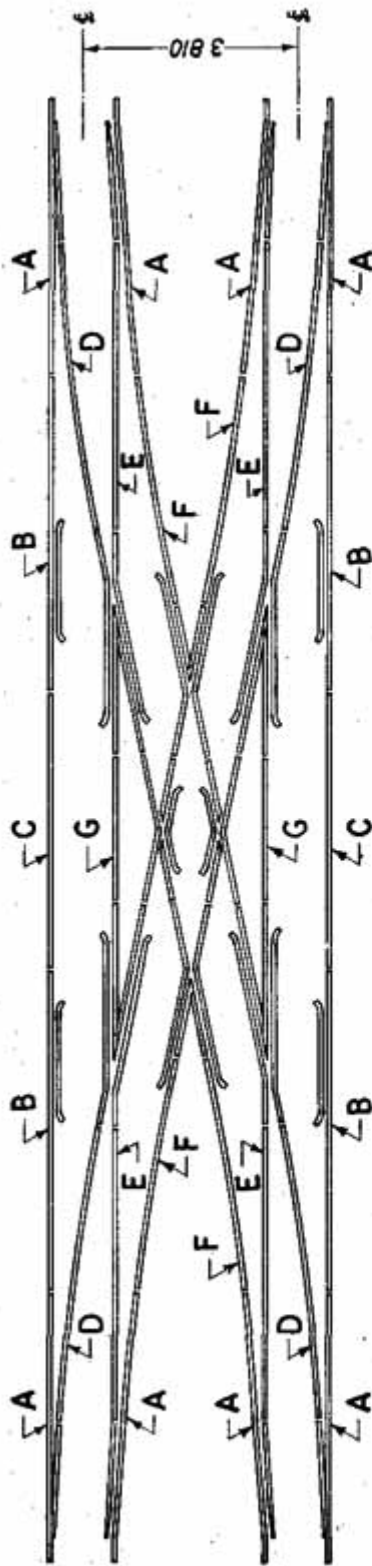


TABLE OF RAIL LENGTHS

RAIL SECTION	ASSEMBLY DRG. N <sup>o</sup>	D I M E N S I O N S (mm)									
		A	B	C	D	E	F	G	H	J	K
75 R.	TA 20487	10000	6642	9799	7000	6825	11666	11637	6588	11967	7032

LENGTH OF RAILS FOR 1 IN 8 1/2 SCISSORS CROSSOVERS

3810<sub>mm</sub> TRACK CENTRES M.G.



**TABLE OF RAIL LENGTHS**

RAIL SECTION	ASSEMBLY DRG. NR	D I M E N S I O N S (mm)						
		A	B	C	D	E	F	G
60R.	TA 20443	9000	10666	9000	9870	9828	8046	4645



LENGTH OF RAILS FOR 1 IN 8½ L.H. CROSSOVERS

4725<sup>mm</sup> TRACK CENTRES B.G.

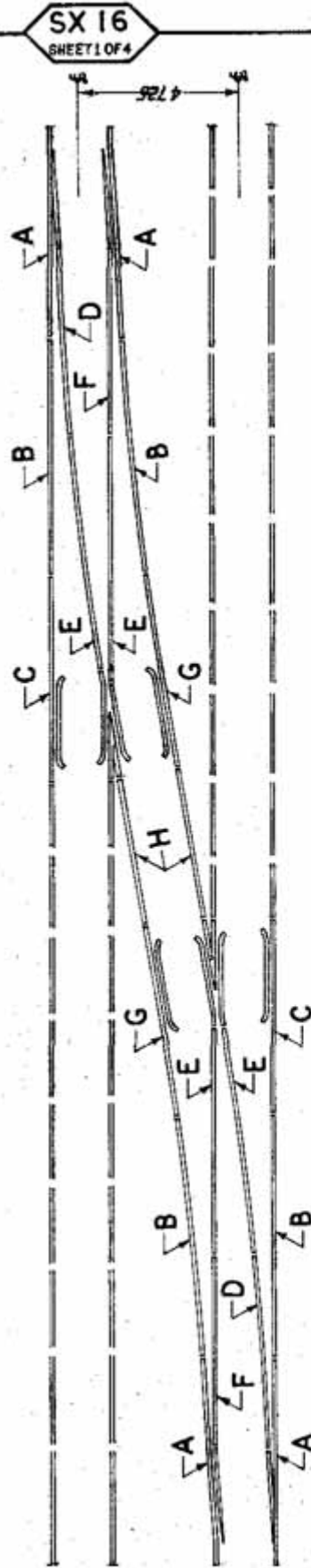


TABLE OF RAIL LENGTHS

RAIL SECTION	ASSEMBLY DRG: N <sup>o</sup>	D I M E N S I O N S (mm)							
		A	B	C	D	E	F	G	H
52 kg	TA 20826	9000	11000	9504	8097	11000	8032	9372	5496
90 R.	TA 20820	9000	11000	9490	8083	11000	8018	9358	5524

LENGTH OF RAILS FOR 1 IN 8 1/2 L. H. CROSSEOVERS  
4725 mm TRACK CENTRES WITH CURVED SWITCHES B. G.

SX 16  
SHEET 3 OF 4

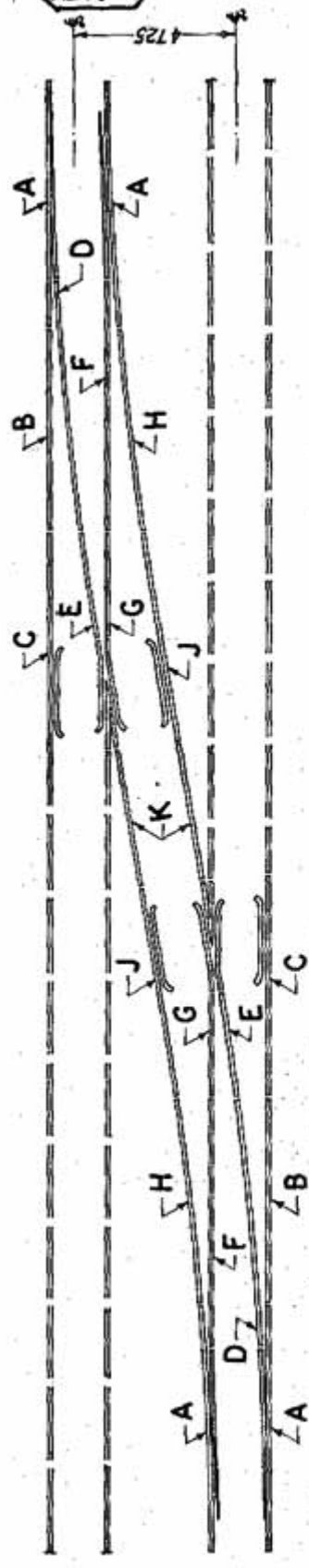


TABLE OF RAIL LENGTHS

RAIL SECTION	ASSEMBLY DRG: N <sup>o</sup>	D I M E N S I O N S (mm)									
		A	B	C	D	E	F	G	H	J	K
52 kg	TA 20837	11000	9030	9474	10953	4590	10910	4564	9076	9300	5496
90R.	TA 20841	11000	9030	9460	4729	10800	4660	10800	9030	9332	5522

LENGTH OF RAILS FOR 1 IN 8½ L.H. CROSSOVERS

4265mm TRACK CENTRES B.G.

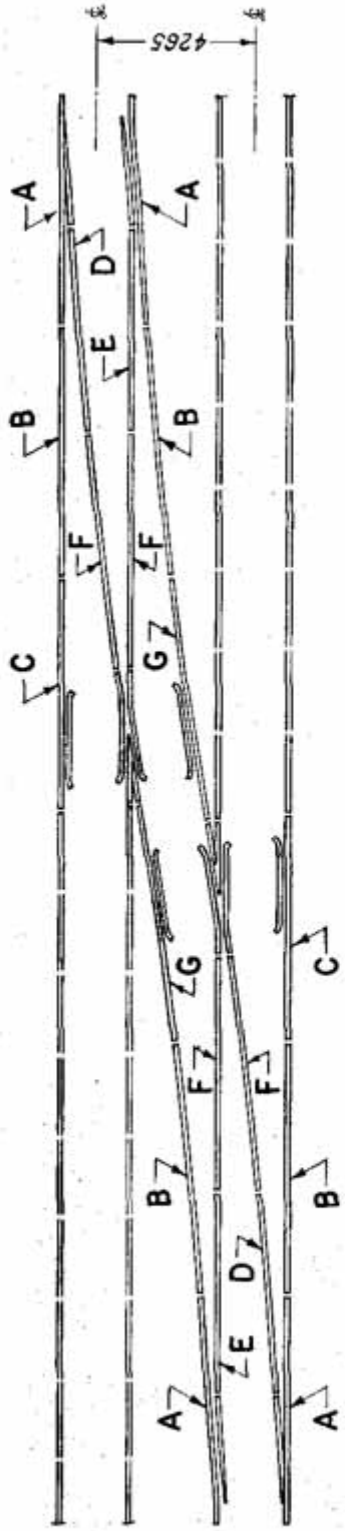


TABLE OF RAIL LENGTHS

RAIL SECTION	ASSEMBLY DRG: NR	DIMENSIONS						
		A	B	C	D	E	F	G
52kg	7A 20827	9000	11000	9504	8097	8032	11000	10936
90R	7A 20821	9000	11000	9490	8083	8018	11000	10949

LENGTH OF RAILS FOR 1 IN 12 L.H. CROSSOVERS  
4725mm AND 4265mm TRACK CENTRES B.G.

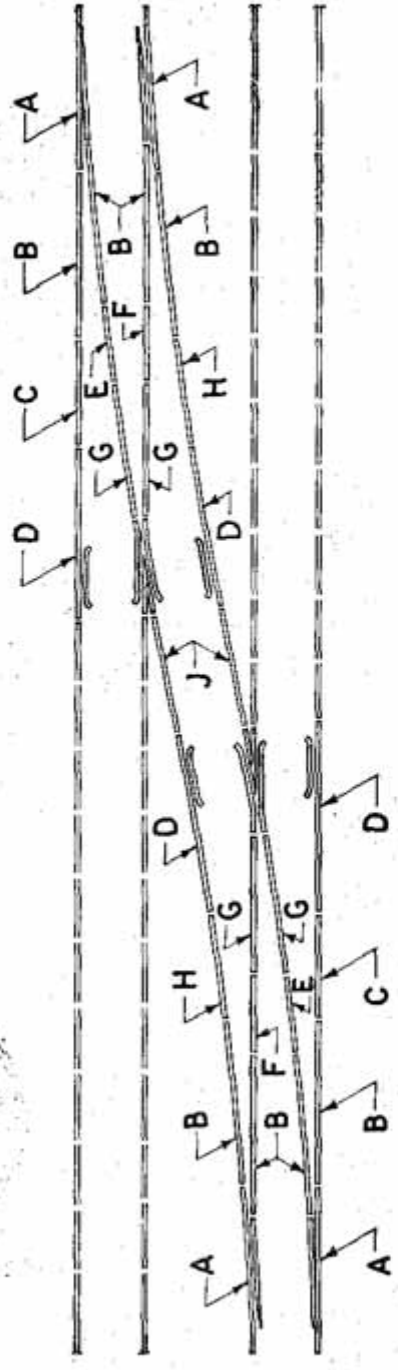


TABLE OF RAIL LENGTHS

RAIL SECTION	ASSEMBLY DRG: N <sup>o</sup>	TRACK CENTRES	DIMENSIONS (in mm)									
			A	B	C	D	E	F	G	H	J	
52 kg 90 R.	TA 20824	4725	11000	11000	7986	11000	4862	4817	10000	7892	8653	
	TA 20818		11000	11000	7967	11000	4843	4798	10000	7873	8891	
52 kg 90 R.	TA 20825	4265	11000	11000	7986	11000	4862	4817	10000	7892	3314	
	TA 20819		11000	11000	7967	11000	4843	4798	10000	7873	3352	





LENGTH OF RAILS FOR 11N12 L.H. CROSSOVERS  
4725 mm TRACK CENTRES WITH CURVED SWITCHES B. G.

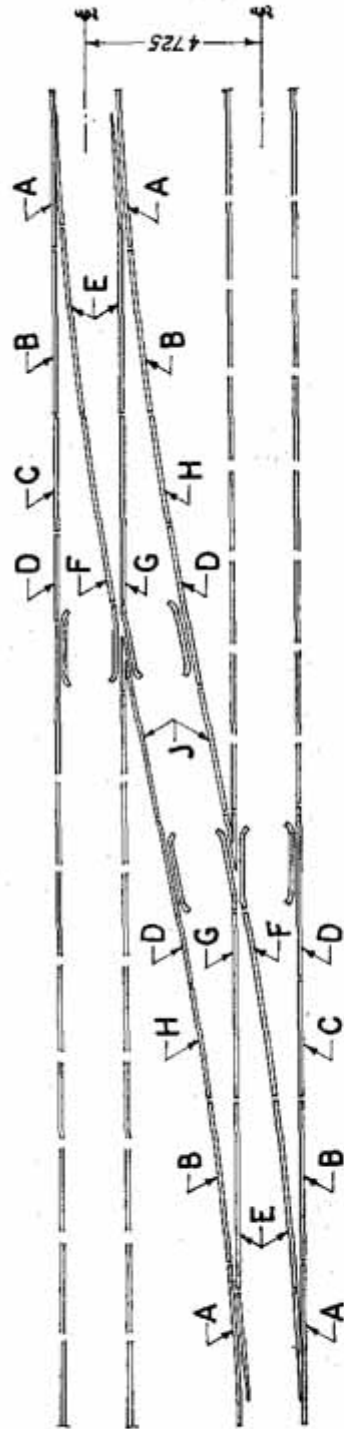


TABLE OF RAIL LENGTHS

RAIL SECTION	ASSEMBLY DRG. NR	D I M E N S I O N S									
		A	B	C	D	E	F	G	H	J	
52 kg	TA 20838	11000	11140	7846	11000	11630	12838	12793	7765	8853	
90 R.	TA 20842	11000	12000	4967	13000	12000	12448	12402	4874	8894	

LENGTH OF RAILS FOR 1 IN 8½ L. H. CROSSOVERS  
4265 mm TRACK CENTRES WITH CURVED SWITCHES M.G.

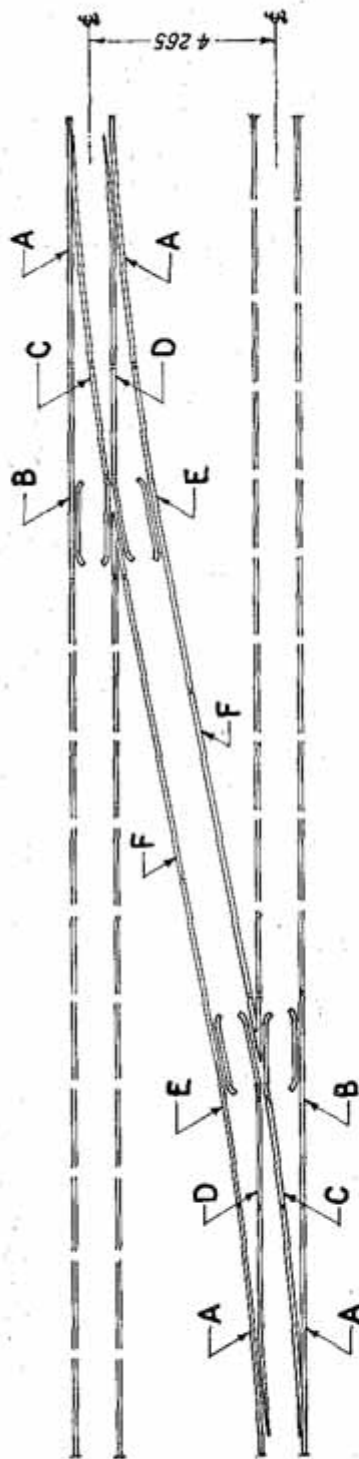


TABLE OF RAIL LENGTHS

RAIL SECTION	ASSEMBLY DRG. NR	D I M E N S I O N S					
		A	B	C	D	E	F
75 R.	7A 21021	10000	9670	4844	4800	12000	10764



LENGTH OF RAILS FOR 1 IN 12 L. H. CROSSOVERS  
4265<sup>mm</sup> TRACK CENTRES M.G.

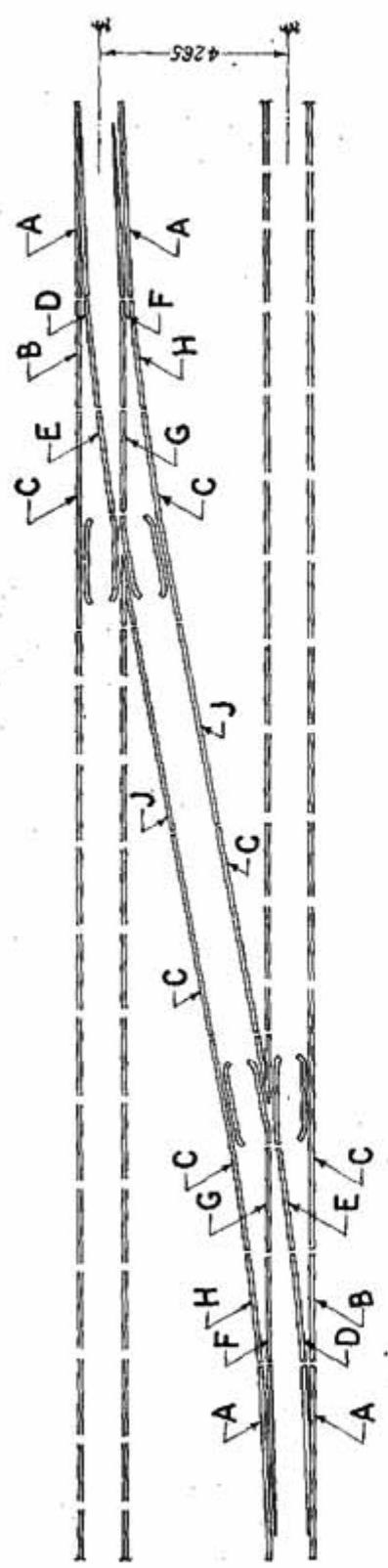
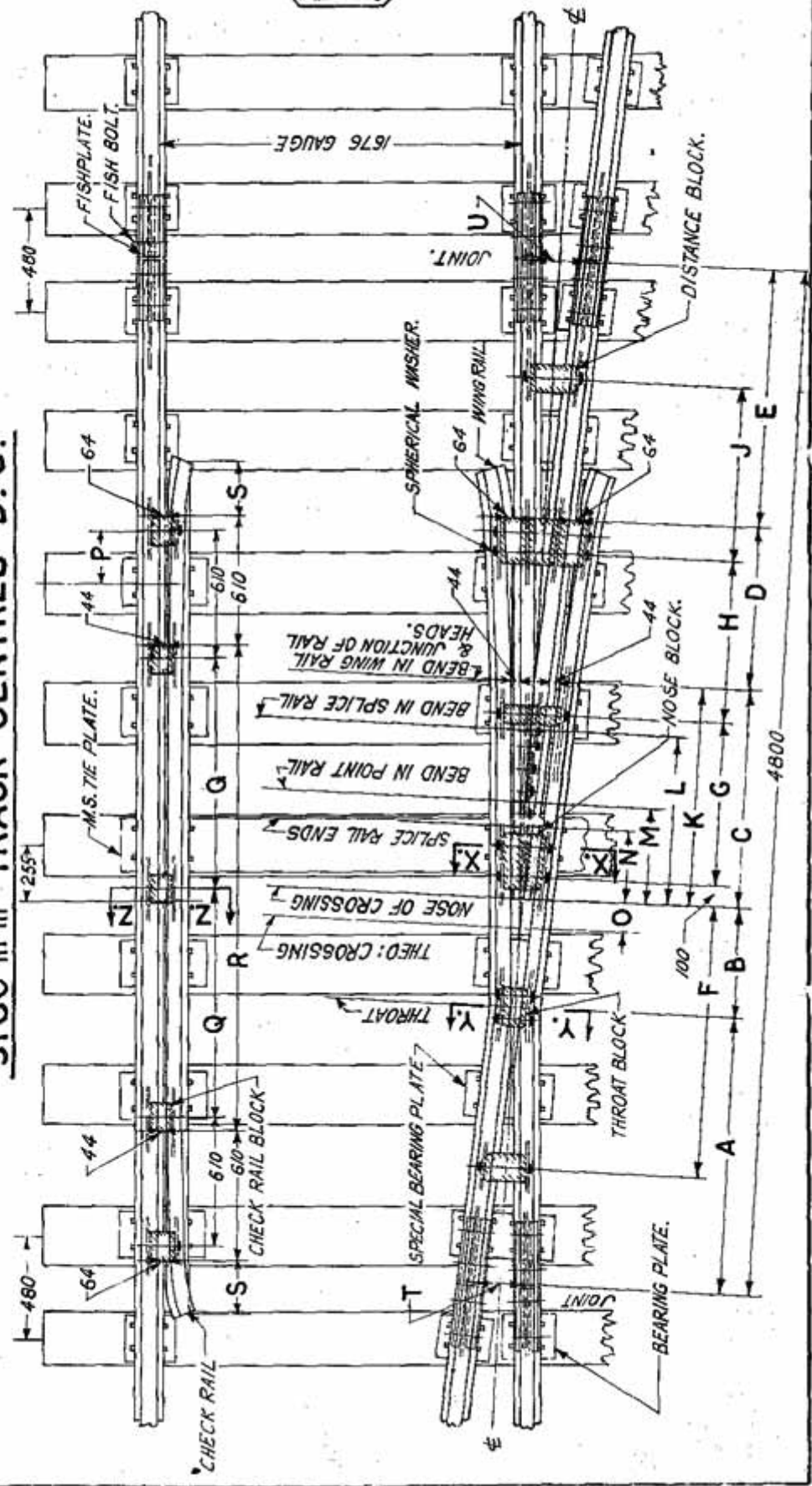
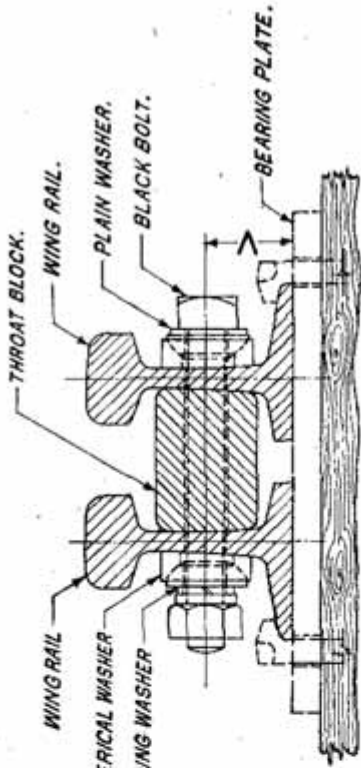


TABLE OF RAIL LENGTHS

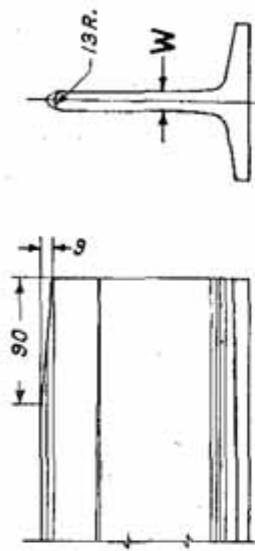
RAIL SECTION	ASSEMBLY DRG. NR.	D I M E N S I O N S (mm)									
		A	B	C	D	E	F	G	H	J	
75 R.	TA 21018	10000	5483	11000	5458	6200	5437	6194	5364	9967	

TYPICAL 1 IN 8 1/2 ACUTE CROSSING FOR SCISSORS  
5180 m m TRACK CENTRES B. G.

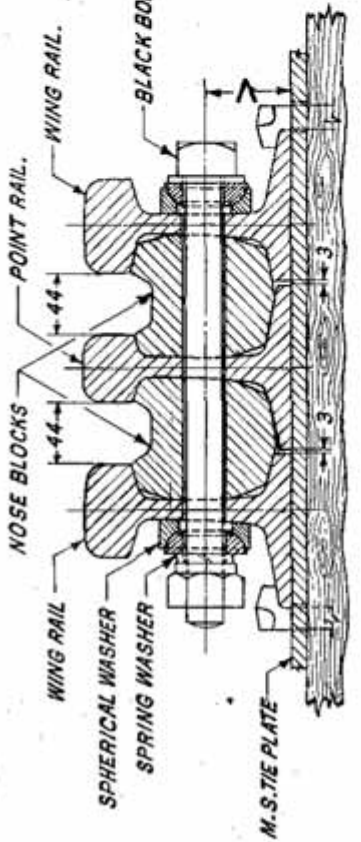




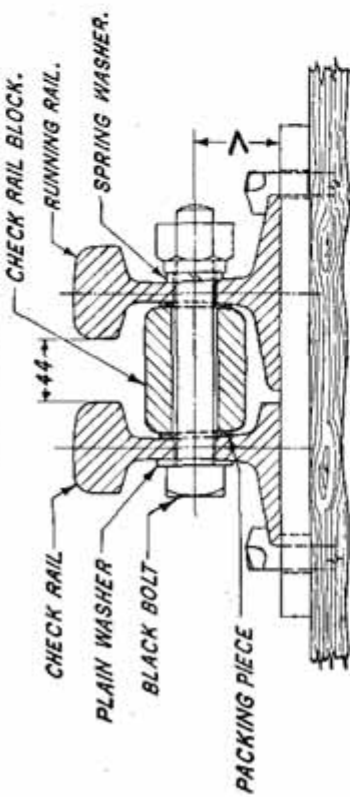
SECTION ON Y. Y.



DETAIL OF NOSE OF CROSSING



SECTION ON X. X.



SECTION ON Z. Z.

TABLE OF DIMENSIONS

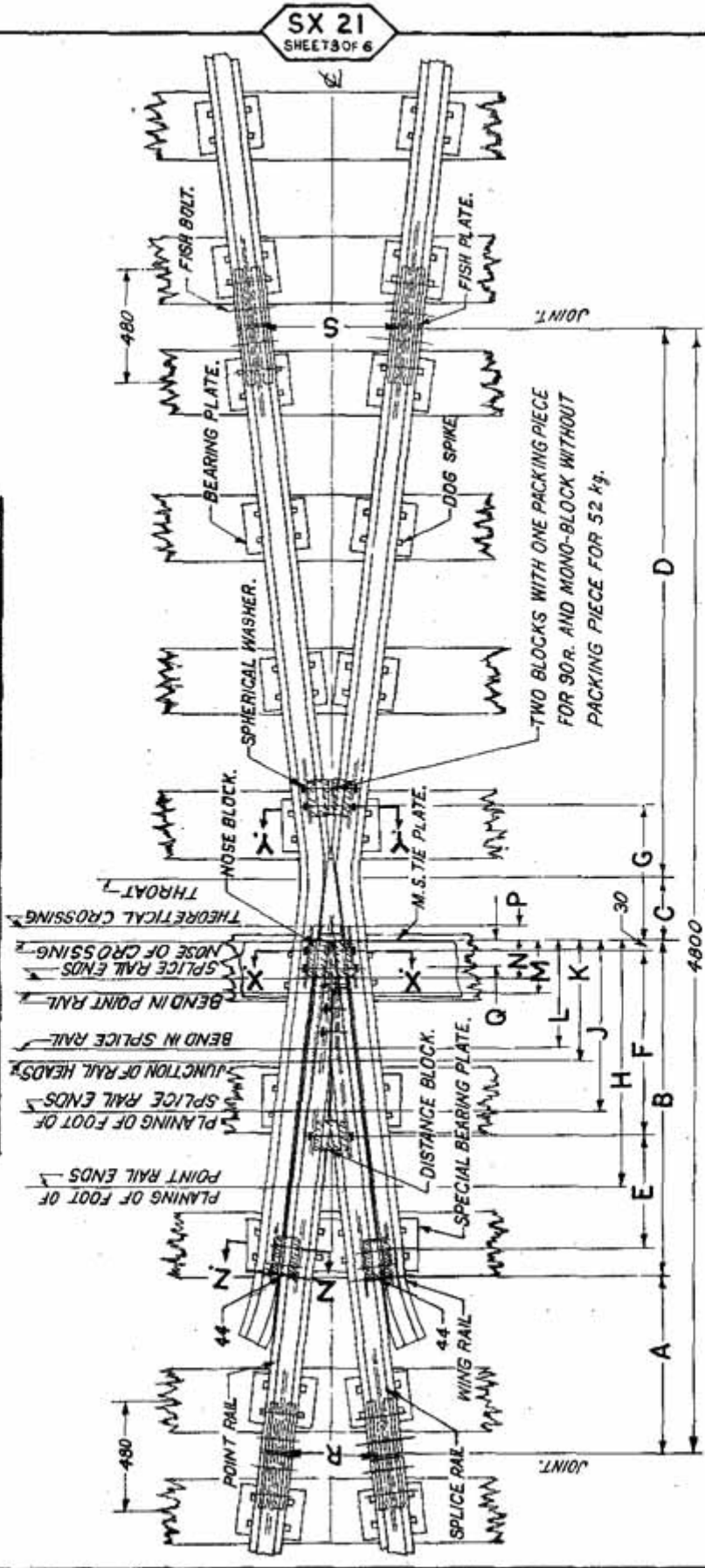
RAIL SECTION	ASSEMBLY DRAWING NO.	DIMENSIONS																						
		A	B	C	D	E	F	G	H	J	K	L	M	N	O	P	Q	R	S	T	U	V	W	
52 kg	TA 20/193	1307	508	1013	757	1215	1260	760	760	760	820	1013	780	440	340	132	240	1055	2235	255±20	197	231	67	15-5
90R.	TA 20/153	1321	494	1022	748	1215	1260	760	760	760	820	1022	804	452	352	118	240	1055	2235	255±20	199	230	60	13-89

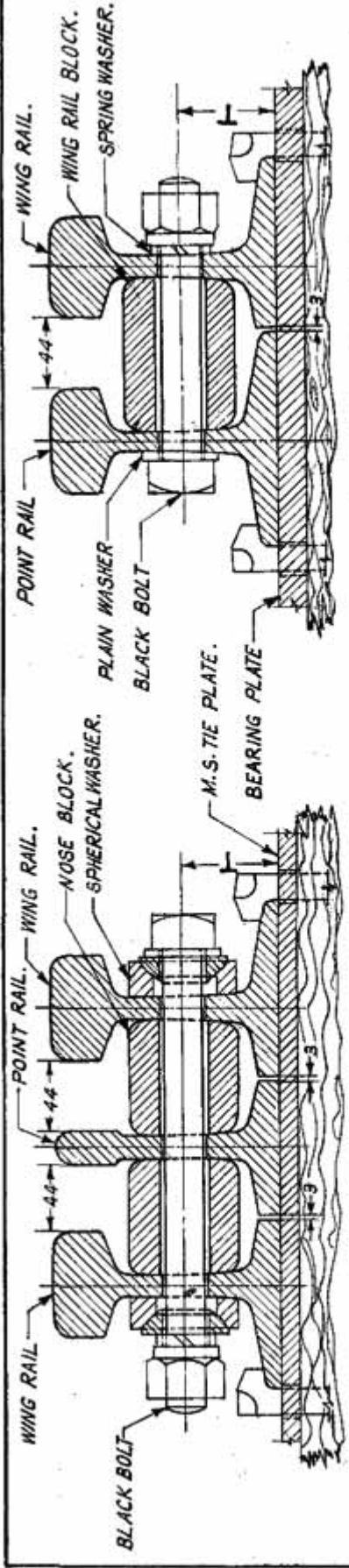


# TYPICAL I IN 4 1/4 ACUTE CROSSING FOR SCISSORS

## 5180 mm TRACK CENTRES B.G.

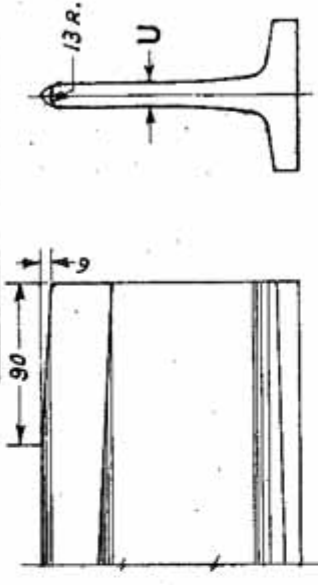
SX 21  
SHEET 3 OF 6



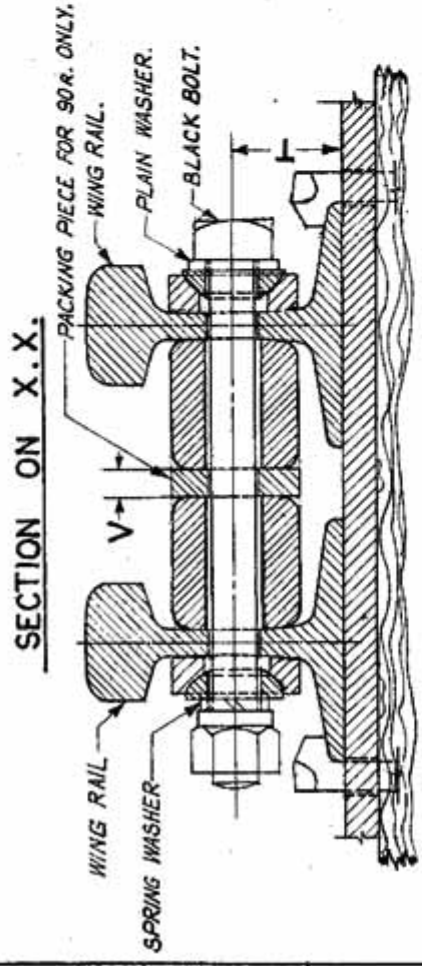


SECTION ON X.X.

SECTION ON Z.Z.



DETAIL OF NOSE OF CROSSING

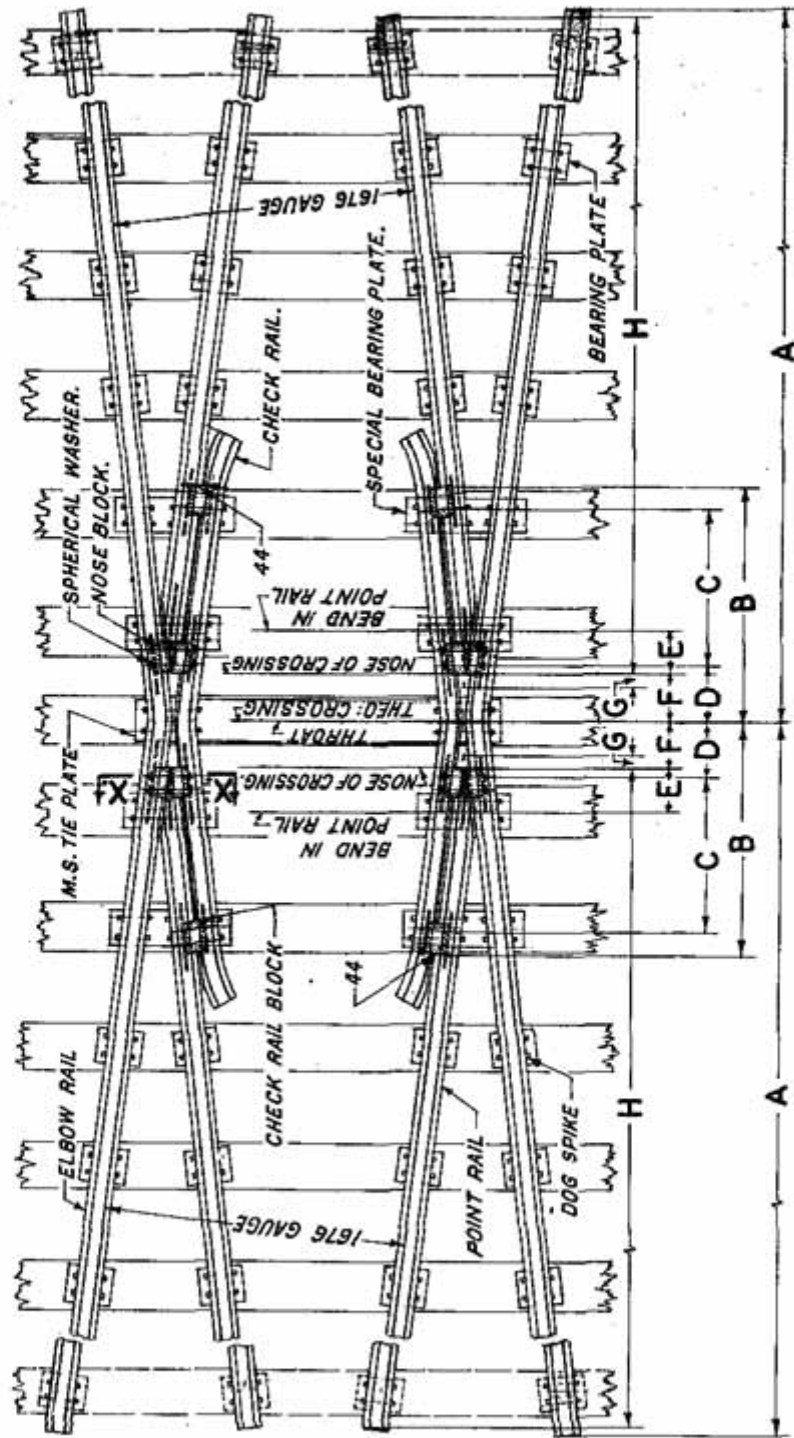


SECTION ON Y.Y.

TABLE OF DIMENSIONS

RAIL SECTION	ASSEMBLY DRAWING #	DIMENSIONS (mm)																			
		A	B	C	D	E	F	G	H	J	K	L	M	N	P	Q	R	S	T	U	V
52 kg	TA 20191	775	1411	254	2360	476	784	538	1088	705	507	441	221	146	66	95	395	600	67	15.5	-
90 R.	TA 20151	776	1410	247	2367	467	790	524	1055	717	511	452	226	151	59	116	394.5	601	60	13.89	14

**TYPICAL IN 4 1/4 OBTUSE CROSSING FOR SCISSORS**  
**5180 mm TRACK CENTRES B.G.**



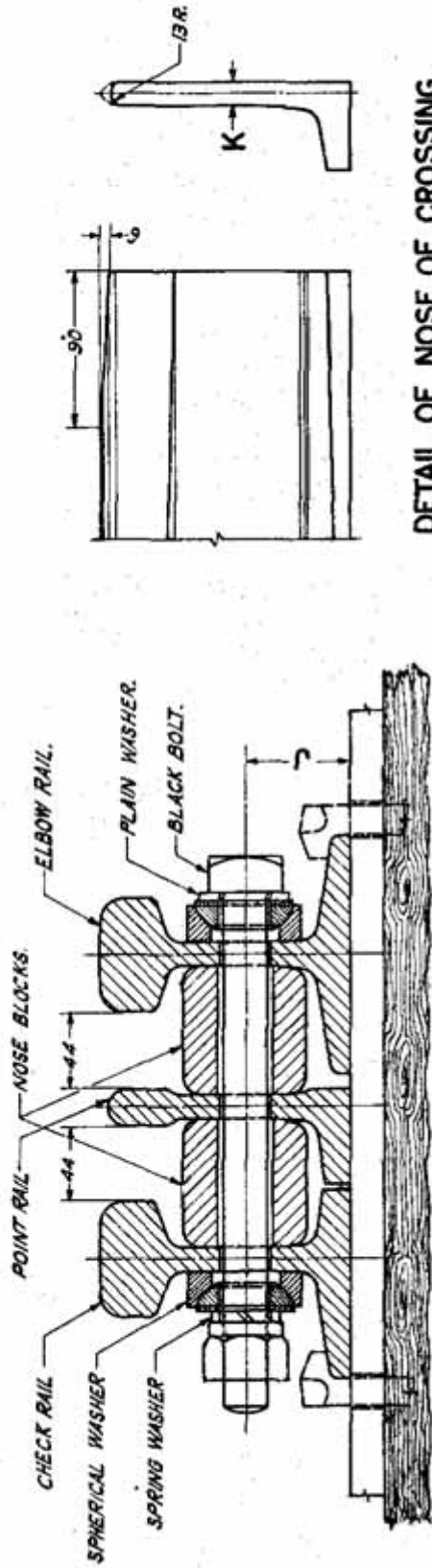
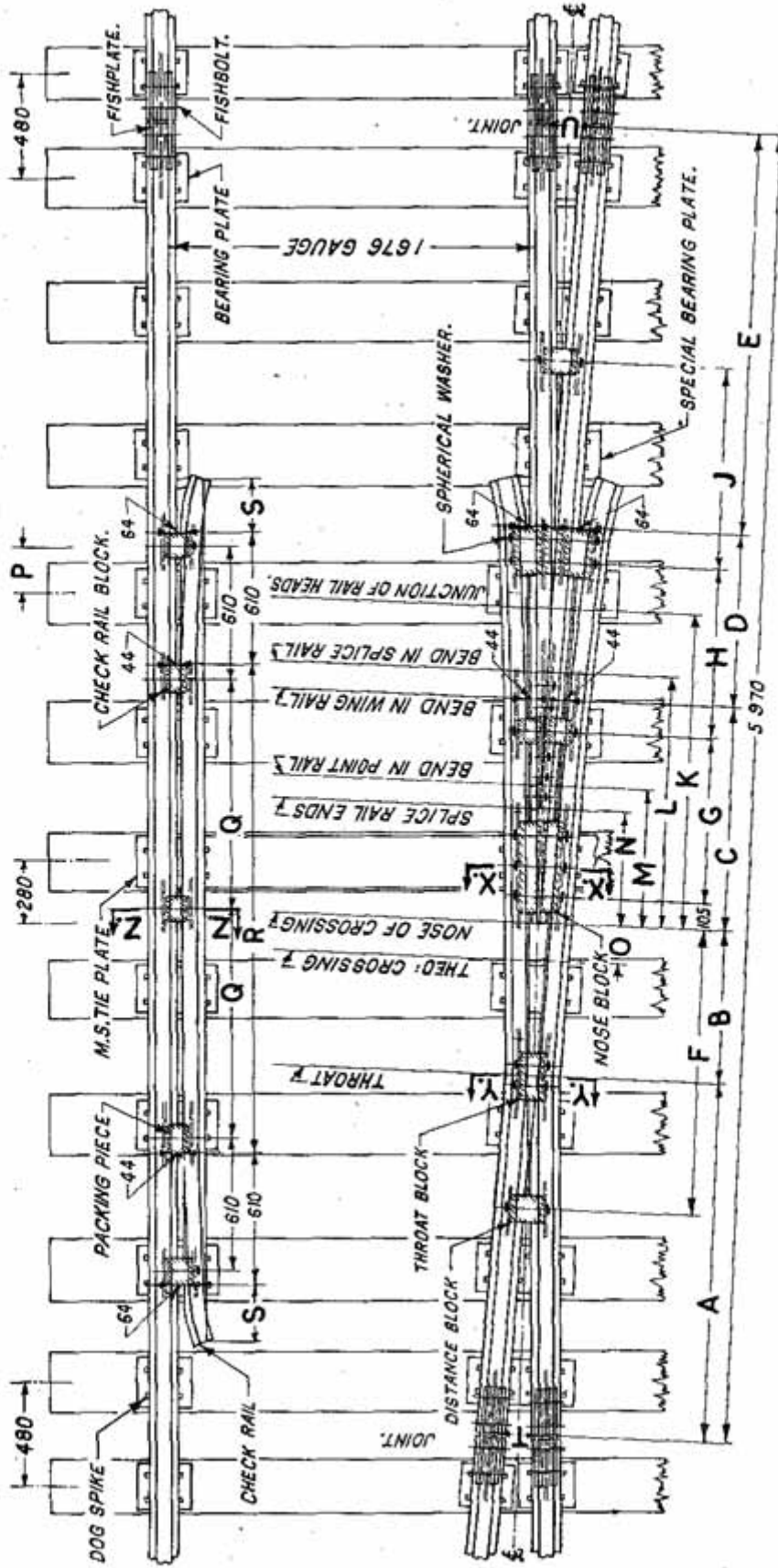


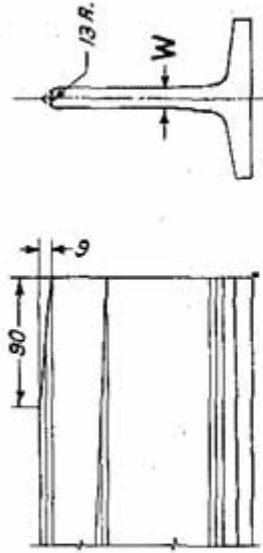
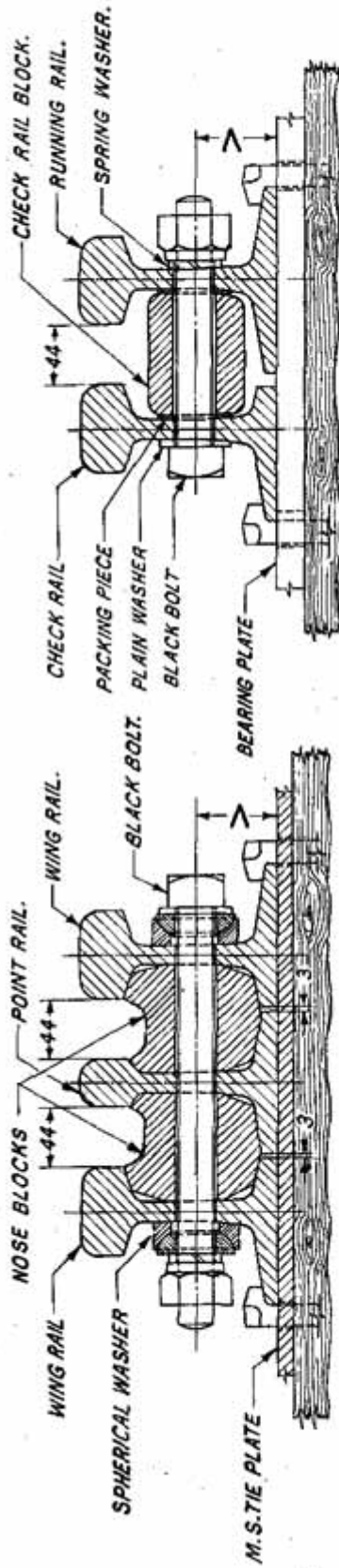
TABLE OF DIMENSIONS

RAIL SECTION	ASSEMBLY DRAWING NO.	DIMENSIONS (mm)										
		A	B	C	D	E	F	G	H	J	K	
52 kg	TA 20/92	4 612	1 295	913	284	221	254	66	4 364	67		
90 R.	TA 20/52	4 627	1 295	918	277	226	247	59	4 364	60		

13-89

**TYPICAL 1 IN 12 ACUTE CROSSING FOR SCISSORS**  
**5180 mm TRACK CENTRES B.G.**



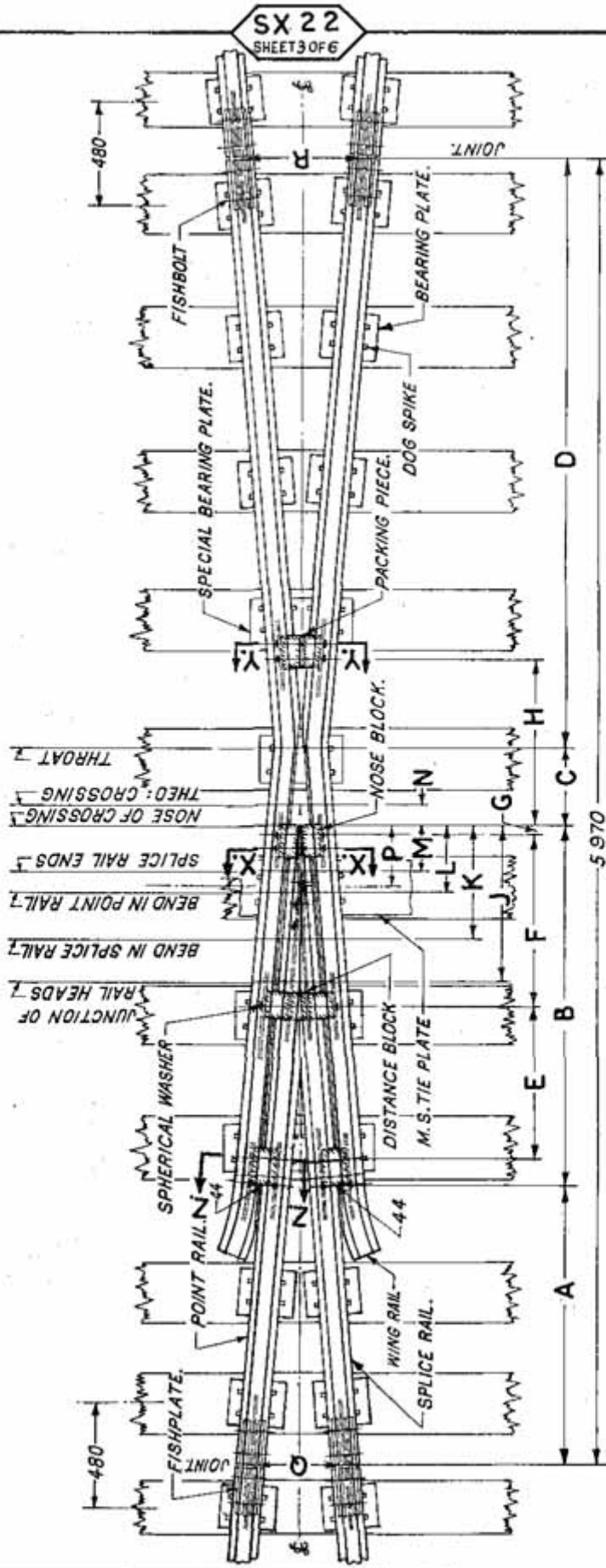


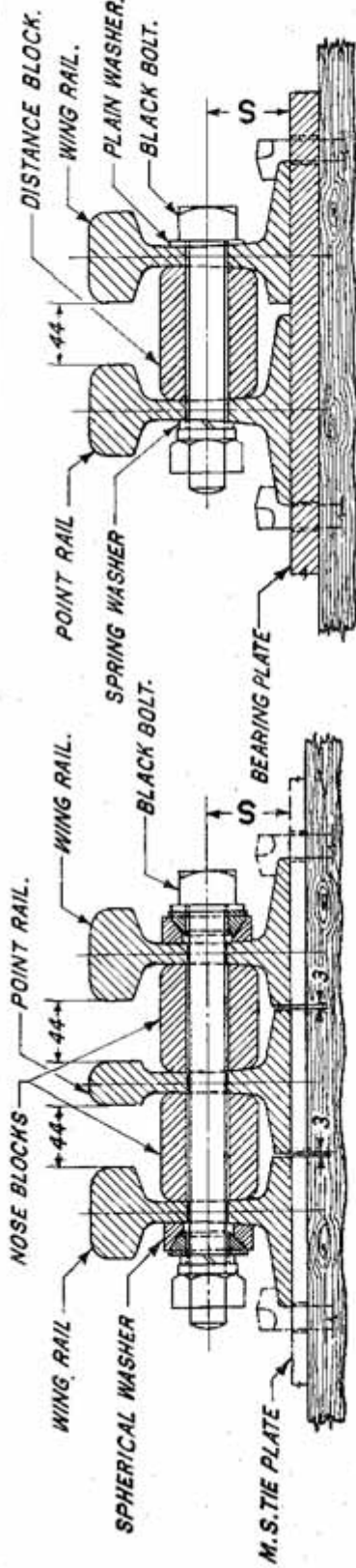
**TABLE OF DIMENSIONS**

RAIL ASSEMBLY SECTION/DRAWING NO	DIMENSIONS (mm)																					
	A	B	C	D	E	F	G	H	J	K	L	M	N	O	P	Q	R	S	T	U	V	W
52kg TA 20203	1610	715	1015	765	1865	1310	760	765	920	1426	1140	620	520	186	210	1055	2235	255±20	178	185	67	15.5
90R. TA 20166	1629	696	1015	765	1865	1310	760	765	950	1437	1170	635	535	167	210	1055	2235	255±20	180	184	60	13.89

# TYPICAL I IN 6 ACUTE CROSSING FOR SCISSORS

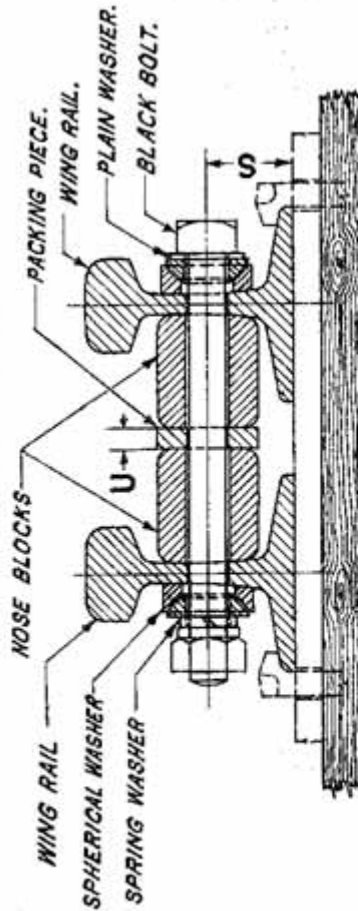
## 5180 mm TRACK CENTRES B.G.



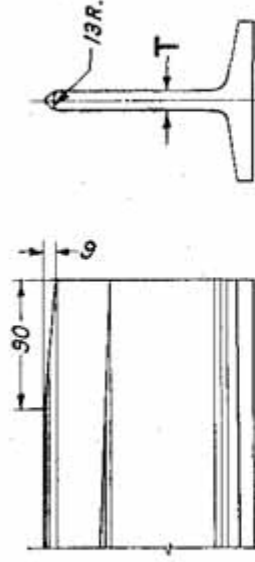


SECTION ON Z.Z.

SECTION ON X.X.



SECTION ON Y.Y.



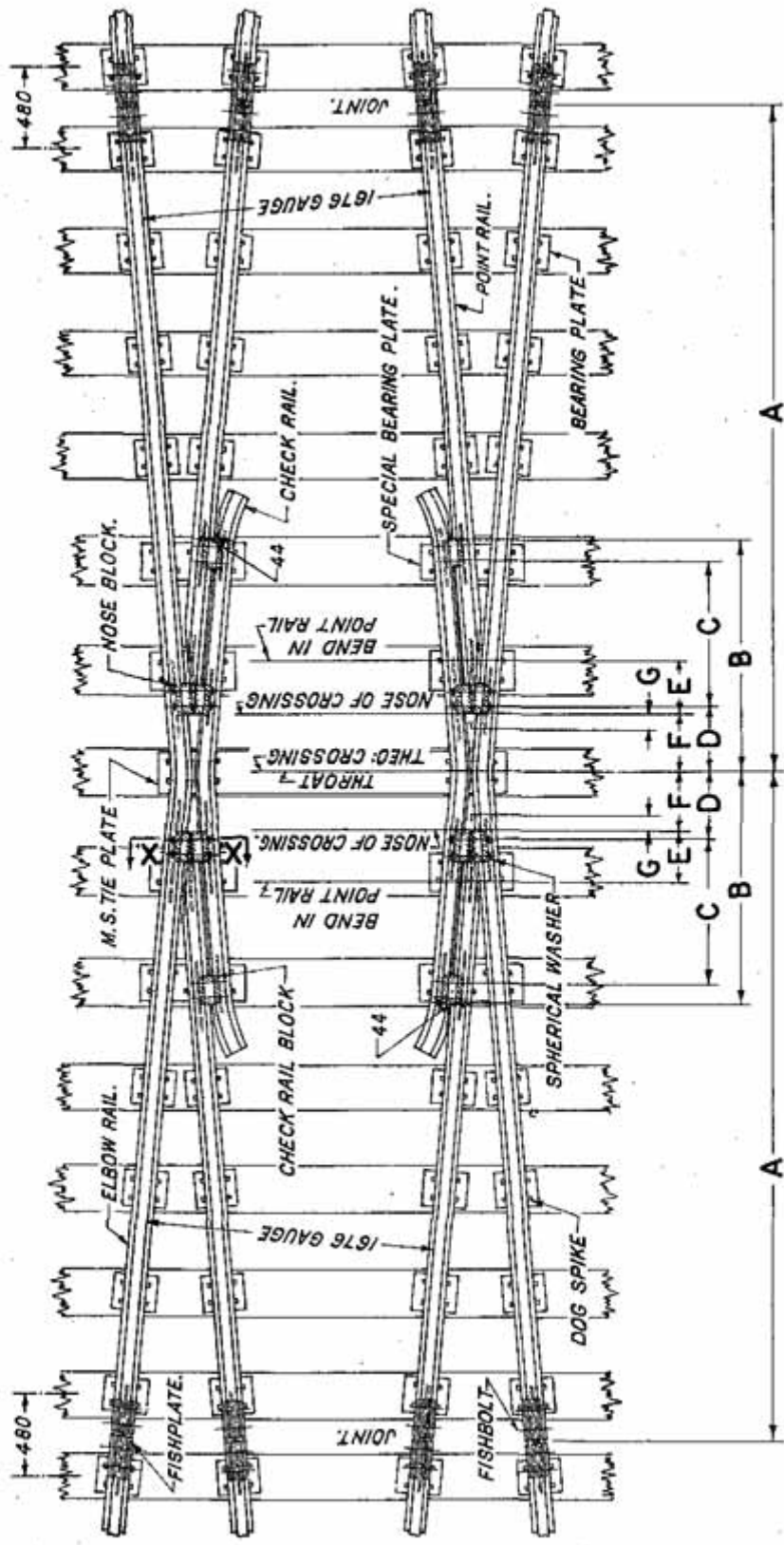
DETAIL OF NOSE OF CROSSING

TABLE OF DIMENSIONS

RAIL SECTION	ASSEMBLY DRAWING NO.	DIMENSIONS (mm)																		
		A	B	C	D	E	F	G	H	J	K	L	M	N	P	Q	R	S	T	U
52kg	TA 20201	1 275	1 652	358	2 685	700	785	40	756	714	520	310	210	93	283	369	492	67	15-5	16
90 R.	TA 20164	1 290	1 637	348	2 695	700	795	30	726	719	536	318	218	83	312	368	493-5	60	13-89	14



**TYPICAL 1 IN 6 OBTUSE CROSSING FOR SCISSORS**  
**5180 mm TRACK CENTRES B.G.**



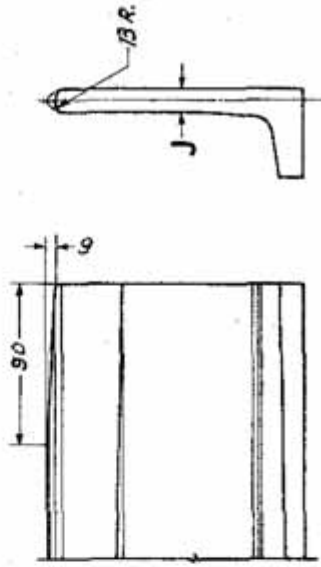
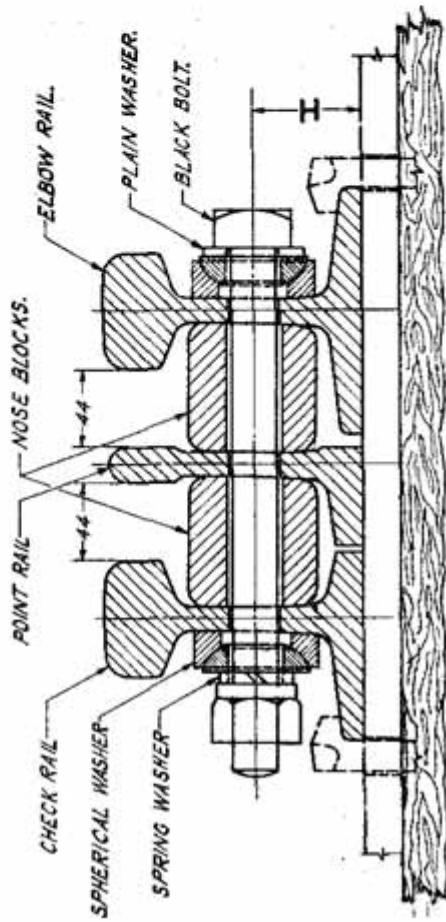
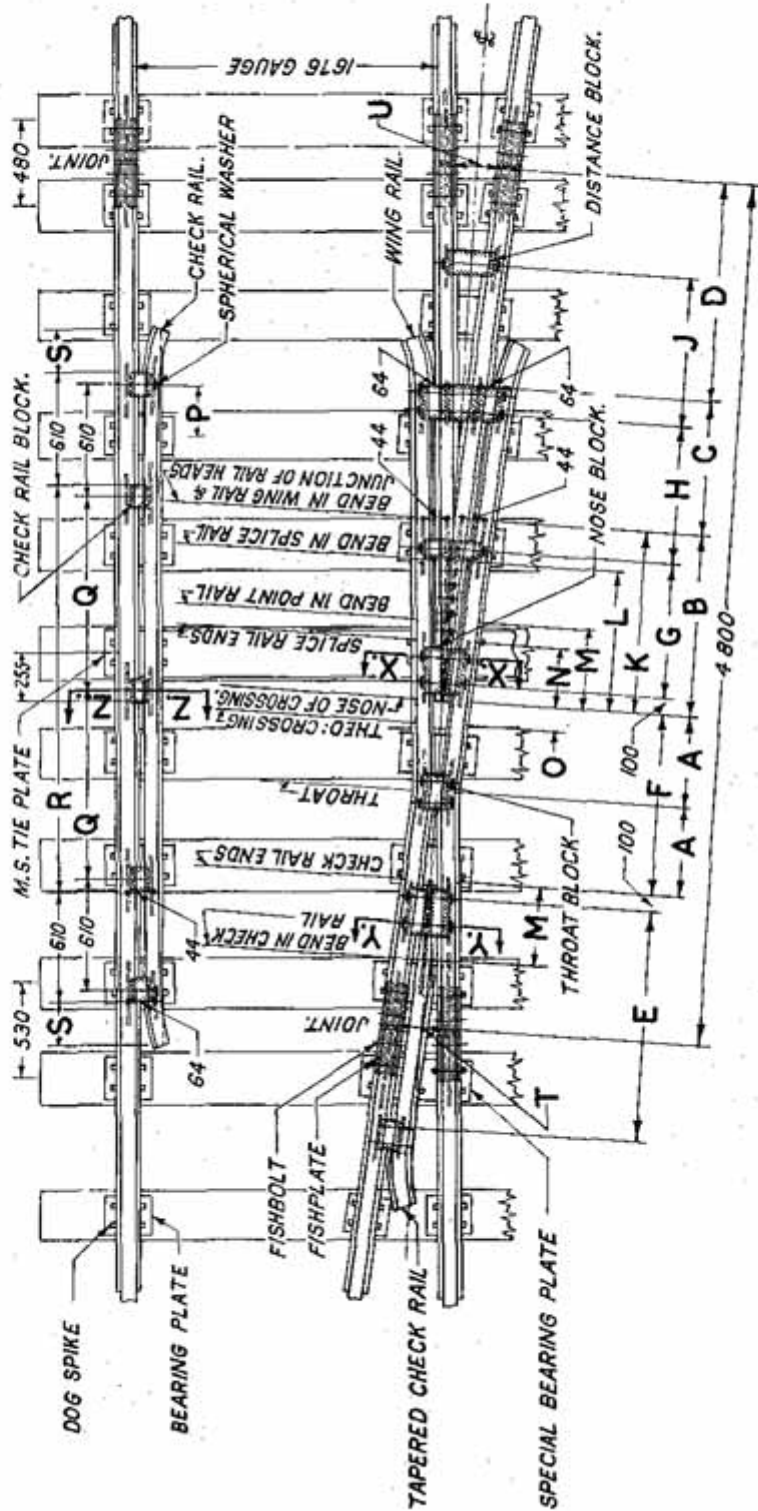


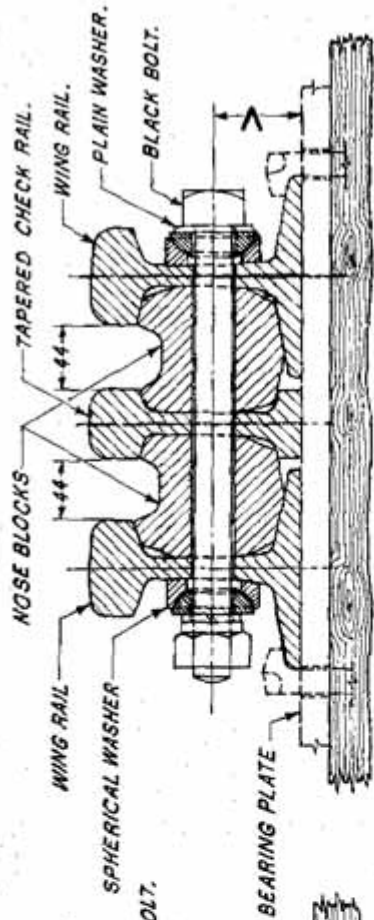
TABLE OF DIMENSIONS

RAIL SECTION	ASSEMBLY DRAWING NO.	DIMENSIONS (mm)									
		A	B	C	D	E	F	G	H	J	
52 kg	TH 20202	3907	1375	875	398	310	356	93	67	15.5	
90 R.	TH 20165	3688	1375	893	378	318	348	83	60	18.89	

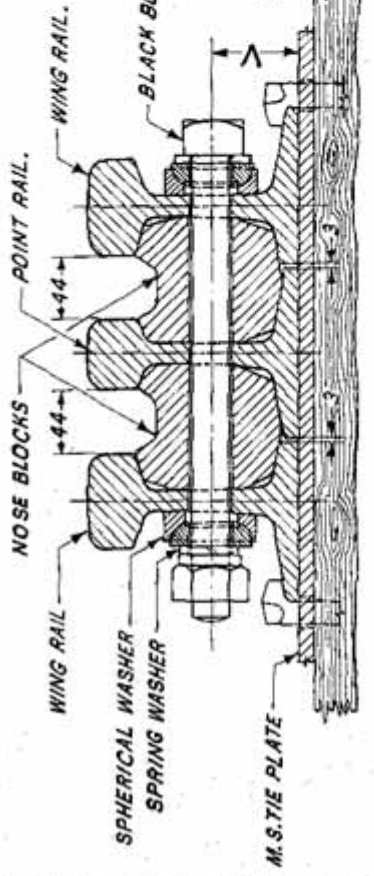
**TYPICAL 1 IN  $8\frac{1}{2}$  ACUTE CROSSING FOR SCISSORS**

**4725 mm TRACK CENTRES B.G.**

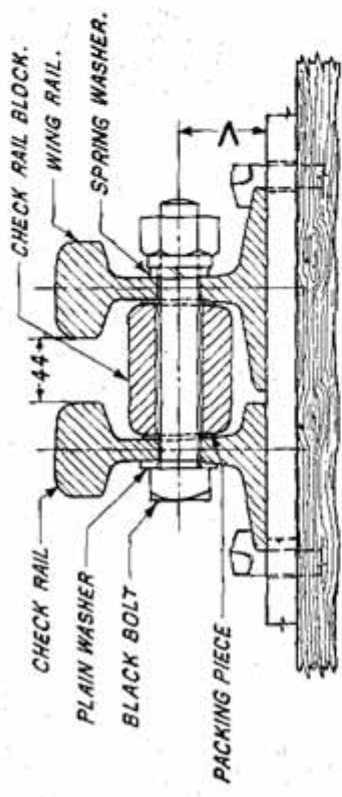




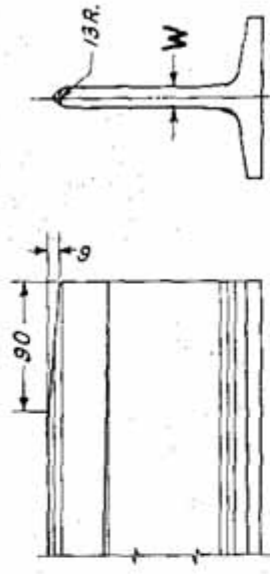
SECTION ON X.X.



SECTION ON Y.Y.



SECTION ON Z.Z.

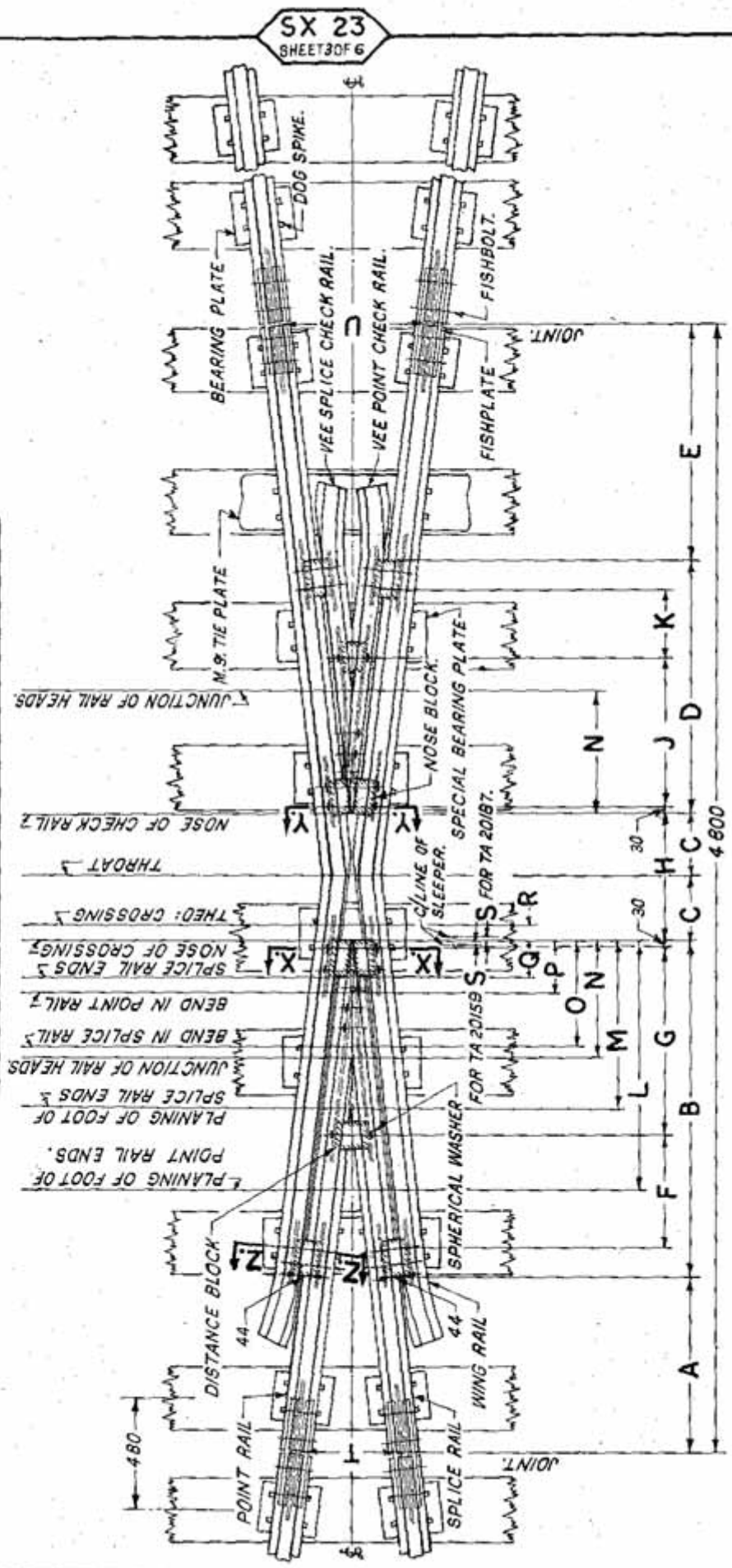


DETAIL OF NOSE OF CROSSING

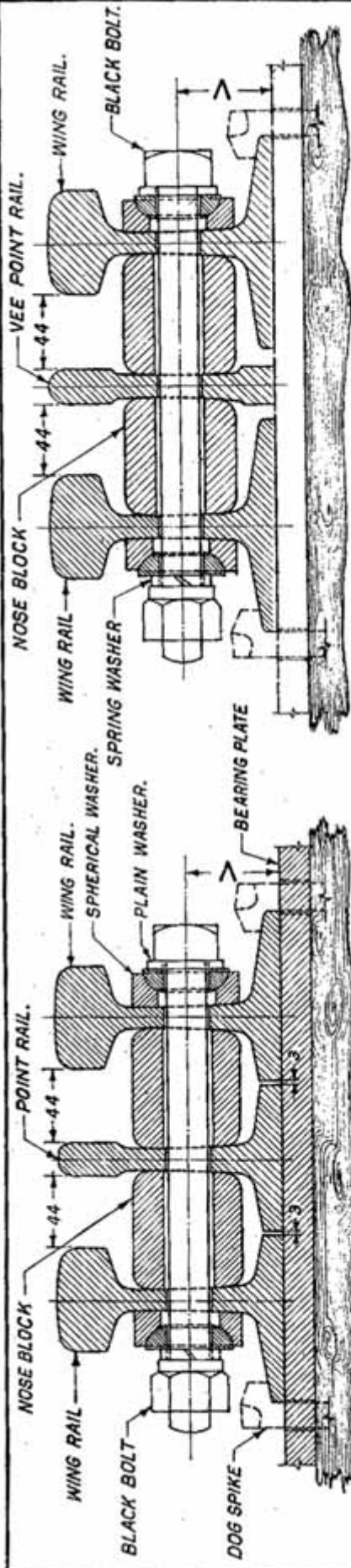
TABLE OF DIMENSIONS

RAIL ASSEMBLY SECTION DRAWING NO.	DIMENSIONS (mm)																					
	A	B	C	D	E	F	G	H	J	K	L	M	N	O	P	Q	R	S	T	U	V	W
52 kg TA 20189	508	1013	757	1215	1285	1016	760	760	820	1013	760	440	340	132	140	1055	2235	255±20	197	231	67	15-5
90R TA 20161	494	1022	748	1215	1295	988	760	760	820	1022	804	452	352	118	240	1055	2235	255±20	199	230	60	13-89

**TYPICAL 1 IN 4 1/4 ACUTE CROSSING FOR SCISSORS**  
**4725mm TRACK CENTRES B.G.**

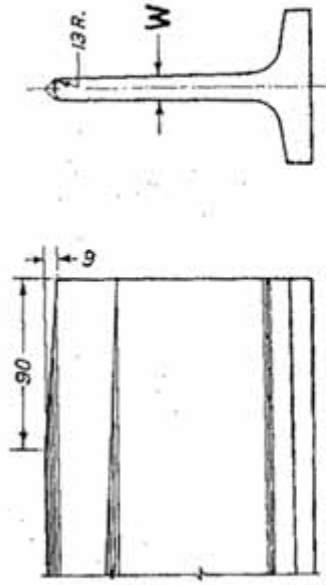


NOTE: DIMENSION S INDICATES THE DISTANCE FROM ACTUAL NOSE OF CROSSING TO THE CENTRE OF SLEEPER.

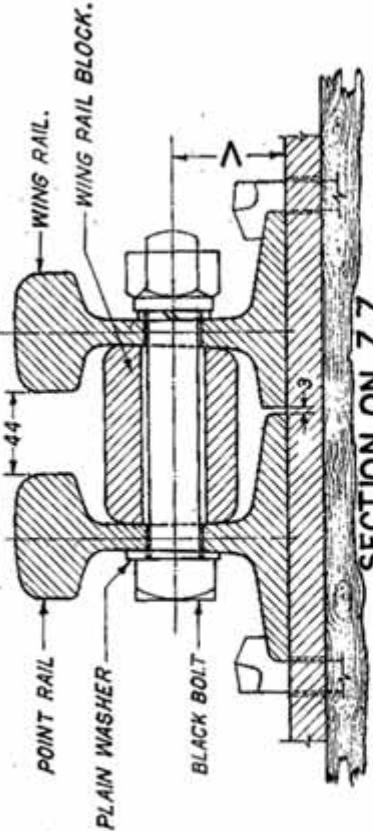


SECTION ON Y. Y.

SECTION ON X. X.



DETAIL OF NOSE OF CROSSING



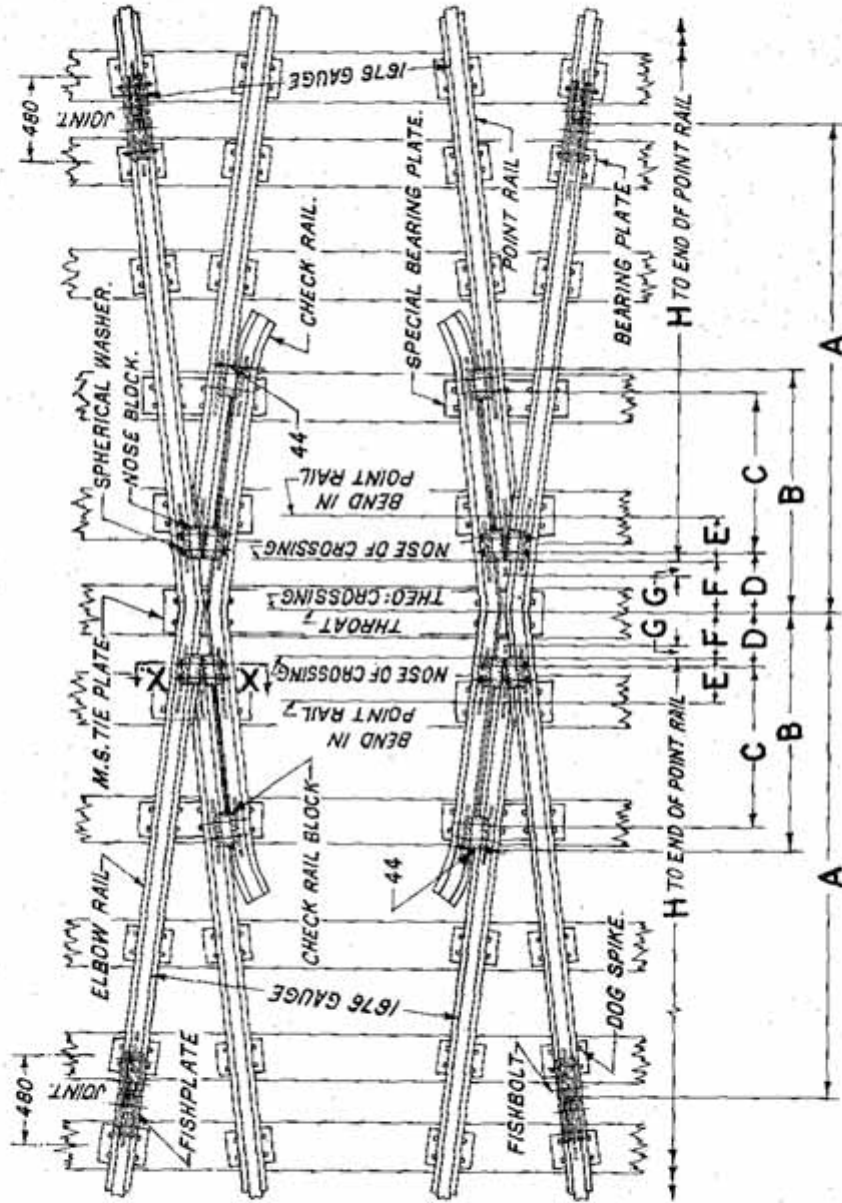
SECTION ON Z. Z.

TABLE OF DIMENSIONS

DIMENSIONS  
(mm)

RAIL SECTION	ASSEMBLY DRAWING NO	DIMENSIONS																					
		A	B	C	D	E	F	G	H	J	K	L	M	N	O	P	Q	R	S	T	U	V	W
52kg	TA 20187	775	1411	254	1056	1050	476	784	508	626	290	1088	705	507	441	221	146	66	9	395	600	67	15.5
90R.	TA 20159	776	1410	247	1070	1050	467	790	494	636	292	1055	717	511	452	226	151	59	12	394.5	601	60	13.89

**TYPICAL 1 IN 4 1/4 OBTUSE CROSSING FOR SCISSORS  
4725 mm TRACK CENTRES B. G.**



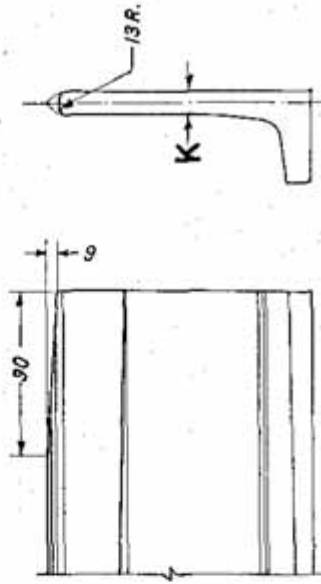
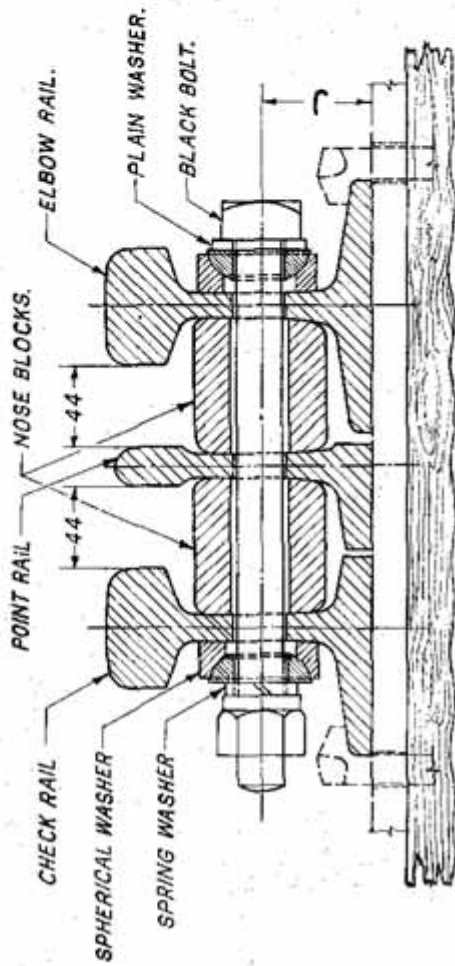
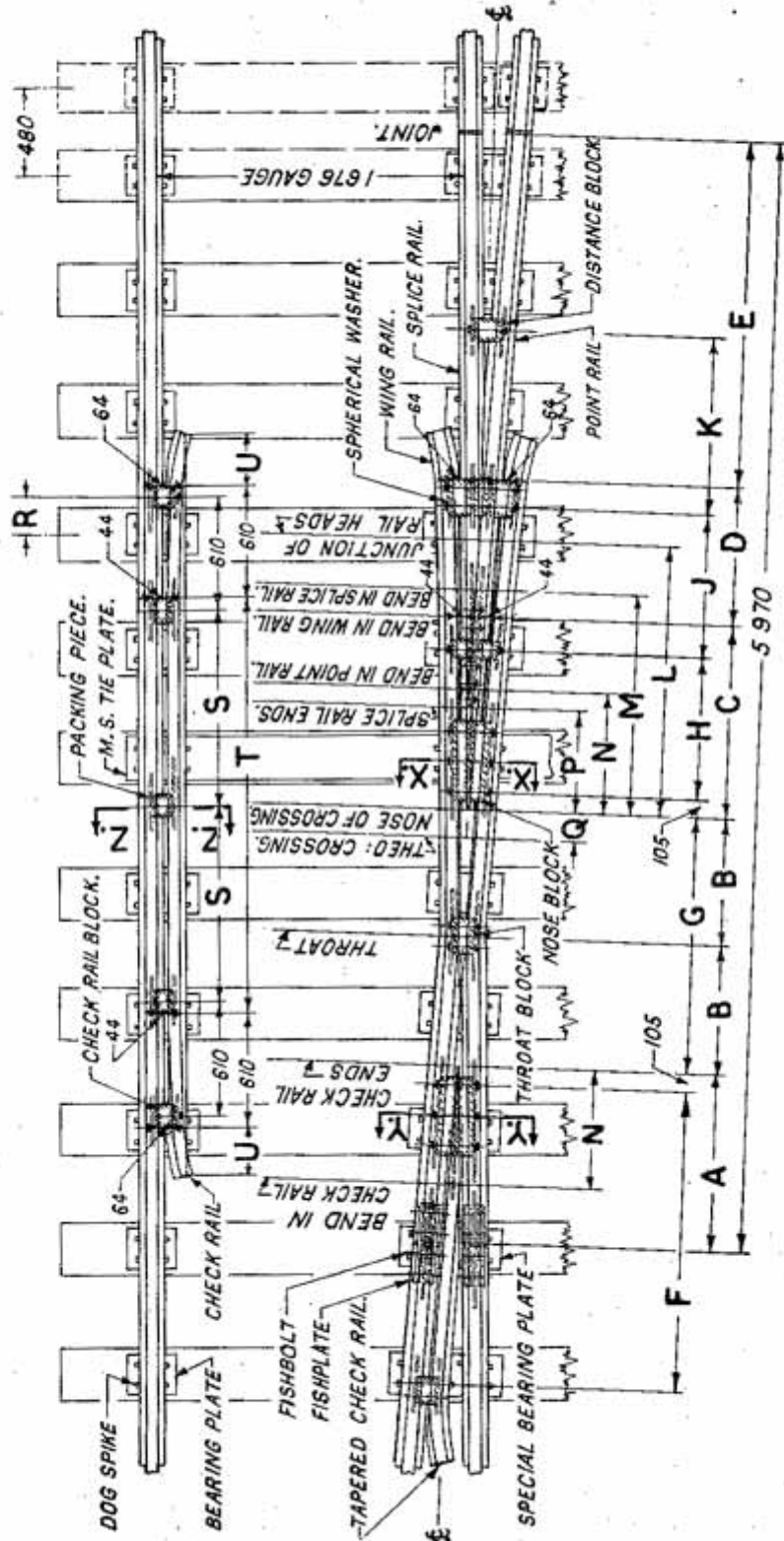


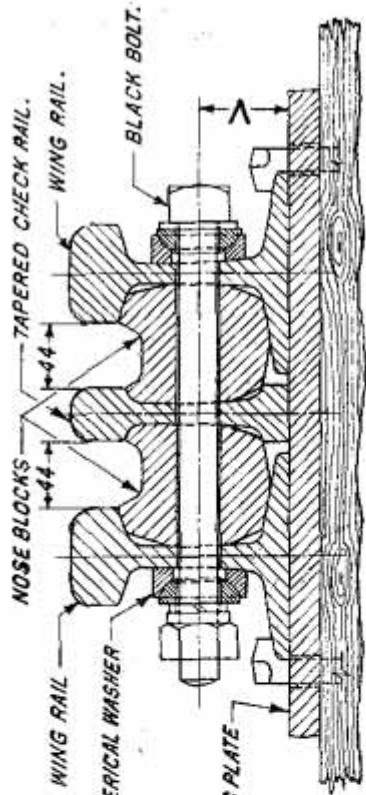
TABLE OF DIMENSIONS

RAIL ASSEMBLY SECTION DRAWING NO.	DIMENSIONS (mm)										
	A	B	C	D	E	F	G	H	J	K	
52 kg TA 20188	2 679	1 295	913	284	221	254	66	4 364	67	15.5	
90R. TA 20160	2 693	1 295	918	277	226	247	59	4 364	60	13.69	

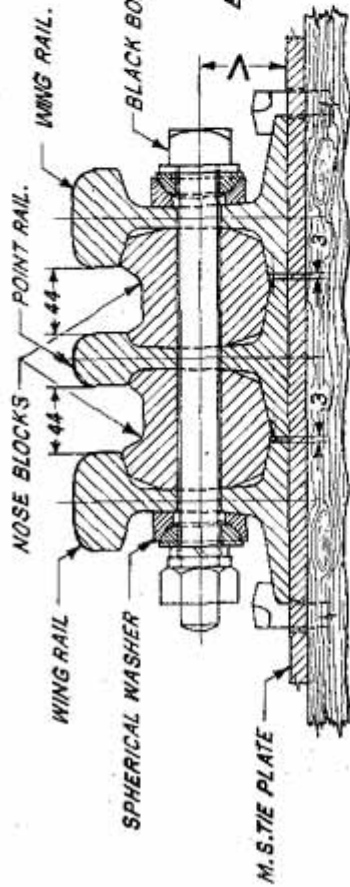


**TYPICAL 1 IN 12 ACUTE CROSSING FOR SCISSORS**  
**4725mm TRACK CENTRES B.G.**

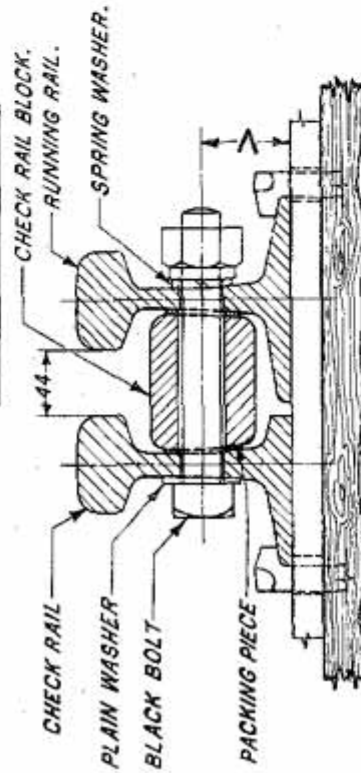




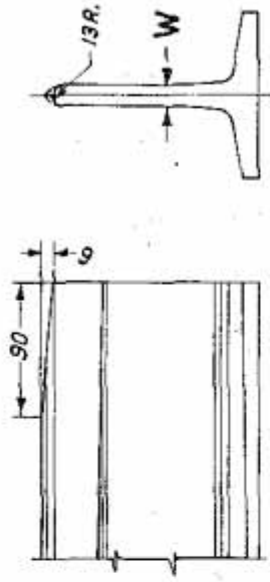
SECTION ON X.X.



SECTION ON Y.Y.



SECTION ON Z.Z.



DETAIL OF NOSE OF CROSSING

TABLE OF DIMENSIONS

RAIL ASSEMBLY SECTION DRAWING NO.	D I M E N S I O N S (mm)																				
	A	B	C	D	E	F	G	H	J	K	L	M	N	P	Q	R	S	T	U	V	W
52 kg TA 20207	895	715	1015	765	1865	1600	1430	760	765	920	1426	1140	620	520	186	210	1055	2 235	255±20	67	15.5
90R. TA 20170	933	696	1015	765	1865	1600	1392	760	765	950	1437	1170	635	535	167	210	1055	2 235	255±20	60	13.89