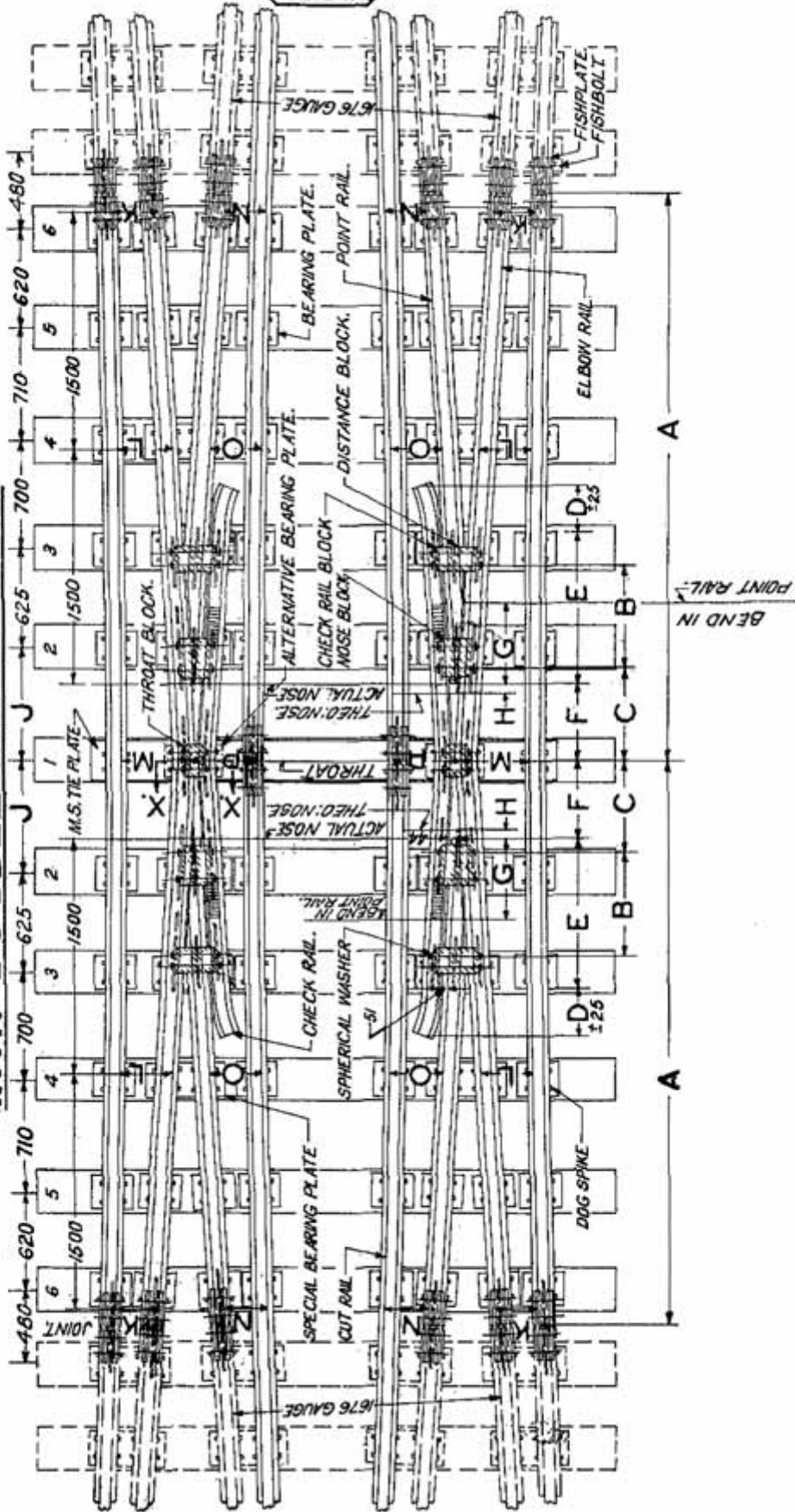
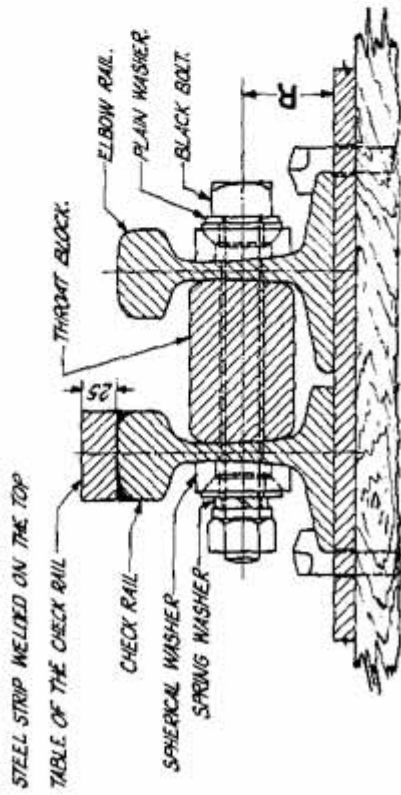
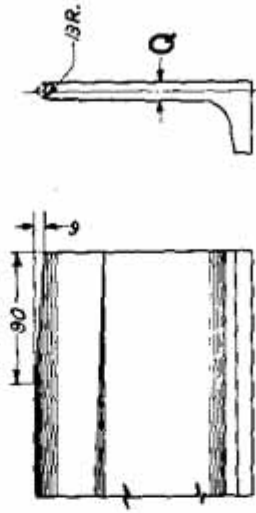


**TYPICAL 1 IN $8\frac{1}{2}$ OBTUSE CROSSING FOR DIAMONDS
WITH DOUBLE SLIPS B. G.**





SECTION ON X.X.



DETAIL OF NOSE OF CROSSING.

TABLE OF DIMENSIONS.

RAIL SECTION	ASSEMBLY ORG. N ^o	DIMENSIONS (mm)																
		A	B	C	D	E	F	G	H	J	K	L	M	N	O	P	Q	R
90 R	7A 20/47	3626	655	594	305	966	494	452	118	734	280	329.5	432.5	260.5	330	443	1389	60

TYPICAL INTERMEDIATE PORTION FOR 1 IN 8 1/2 DIAMOND CROSSING B.G.

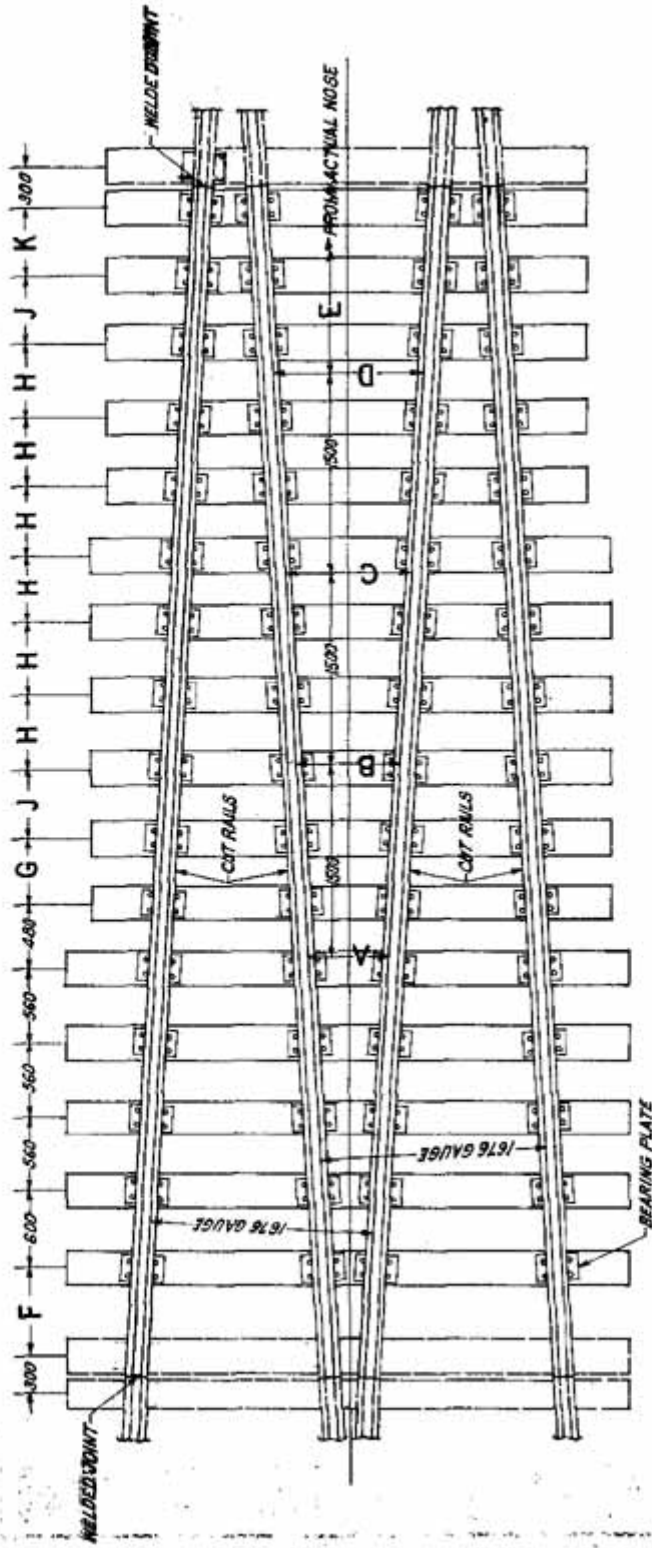


TABLE OF DIMENSIONS

RAIL SECTION		DIMENSIONS (mm)										
ASSEMBLY DRAWING NR		A	B	C	D	E	F	G	H	J	K	
UIC 60N _g	TA 2026-4	569.5	745.5	921.5	1037	4500	650	510	550	540	526	

TYPICAL INTERMEDIATE PORTION FOR 1 IN 8 1/2 DIAMOND CROSSING B.G.

TYPICAL INTERMEDIATE PORTION FOR 1 IN 8 1/2 DIAMOND CROSSING B. G.

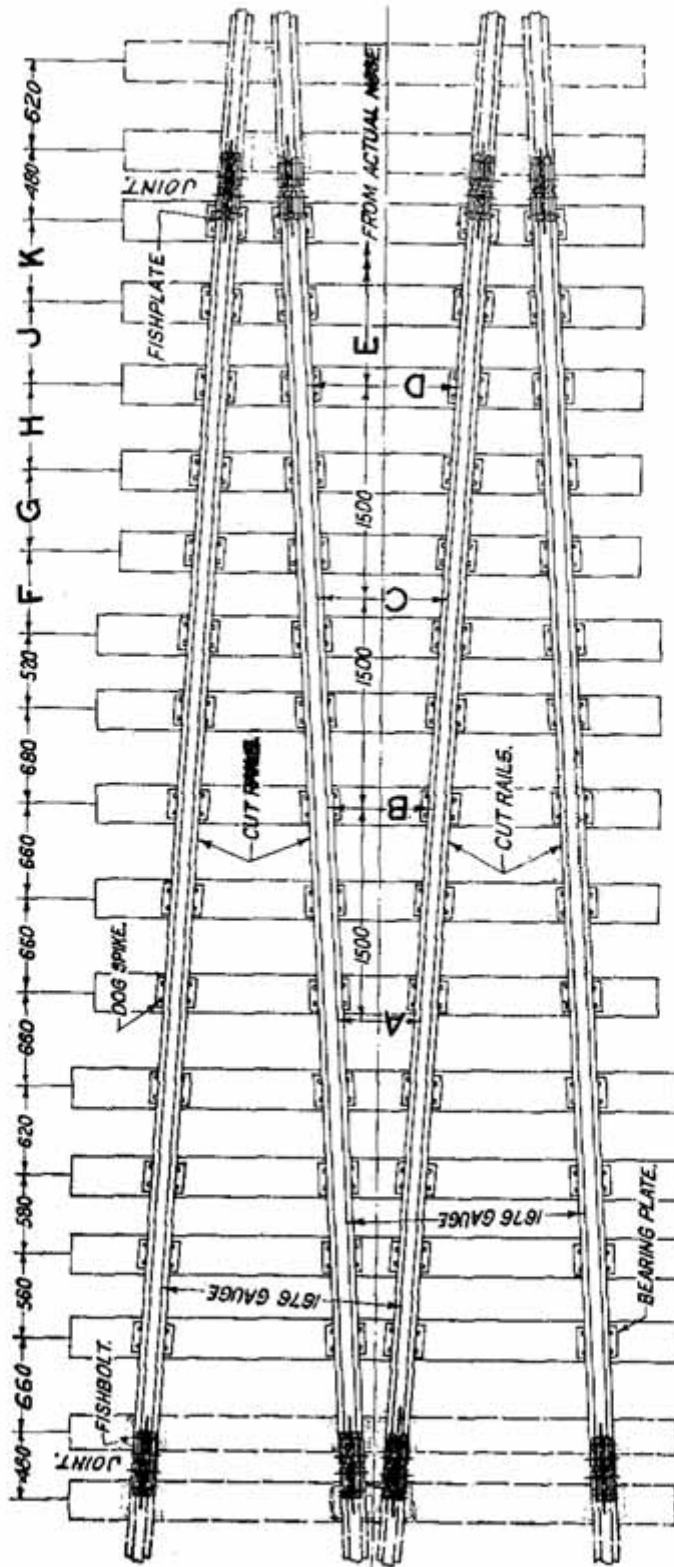
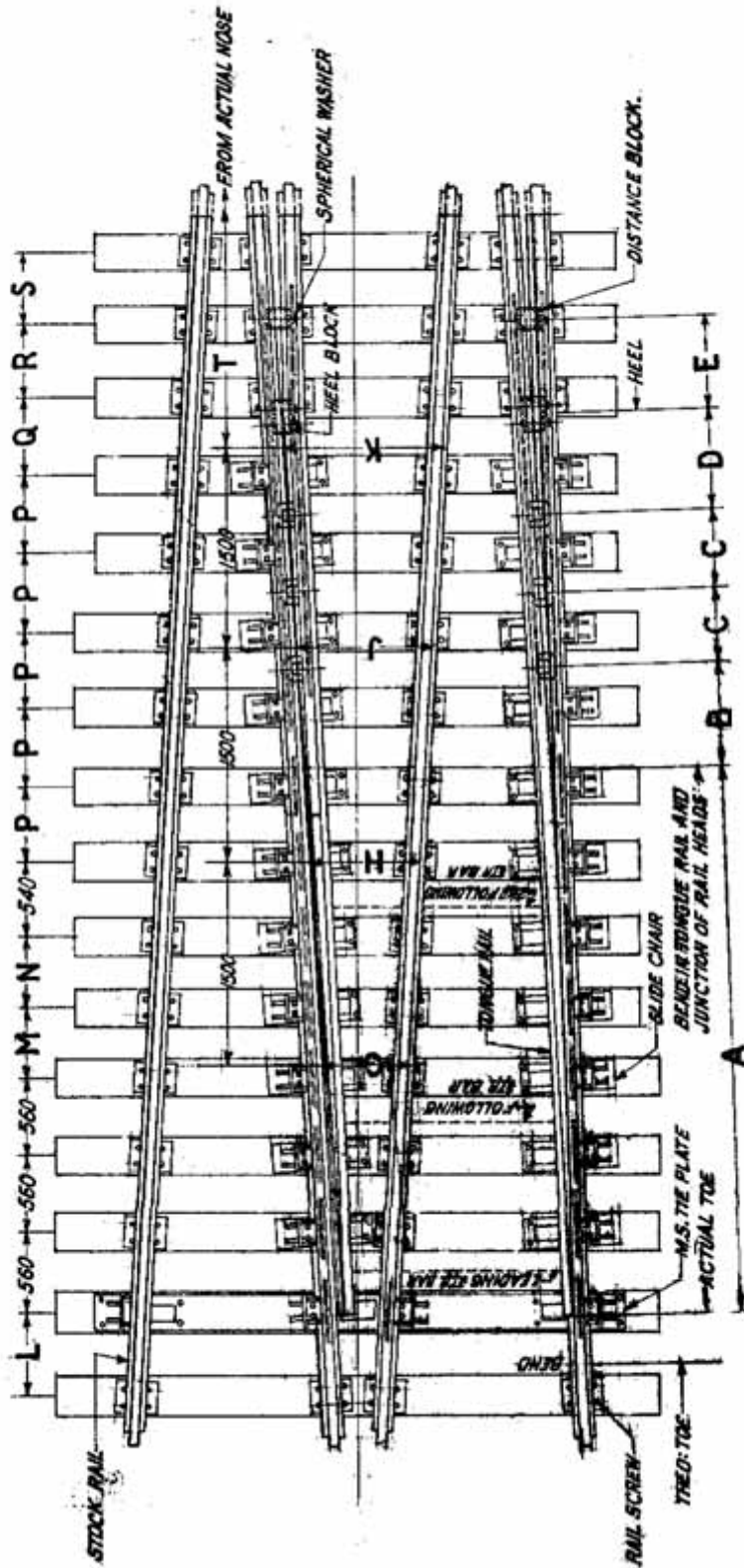
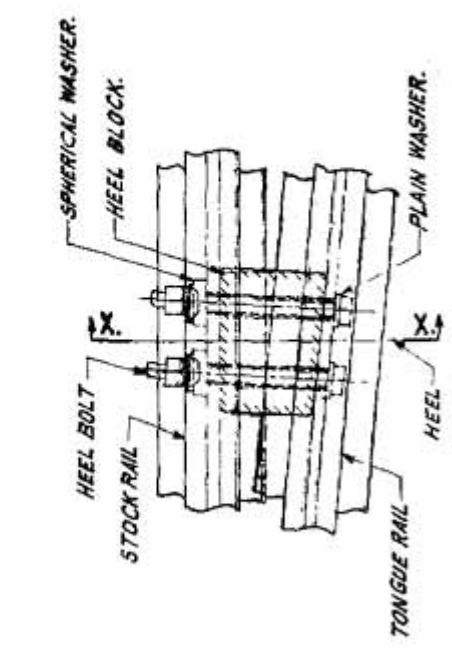


TABLE OF DIMENSIONS.

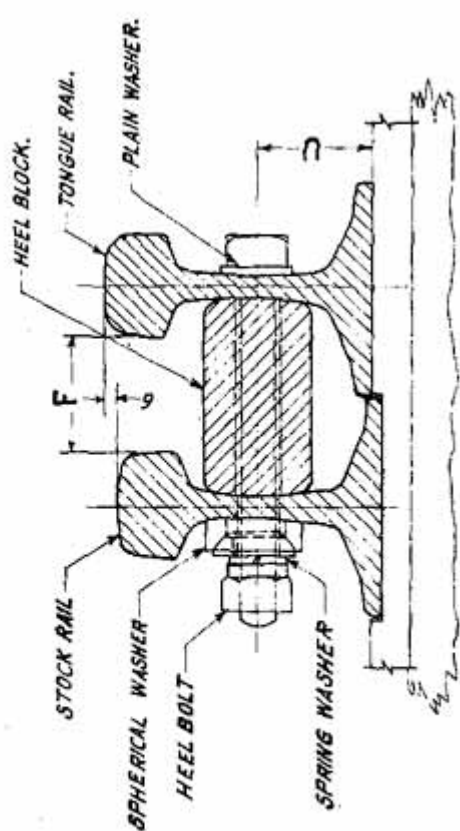
		DIMENSIONS										
RAIL SECTION	ASSEMBLY DRAWING #	A	B	C	D	E	F	G	H	J	K	
90 R.	TA-20144	566	741.5	917.5	1033.5	4500	590	590	600	590	544	

**TYPICAL INTERMEDIATE PORTION FOR 1 IN 8 1/2 DIAMOND CROSSING
WITH SINGLE SLIPS B. G.**





ENLARGED PLAN OF L.H.HEEL



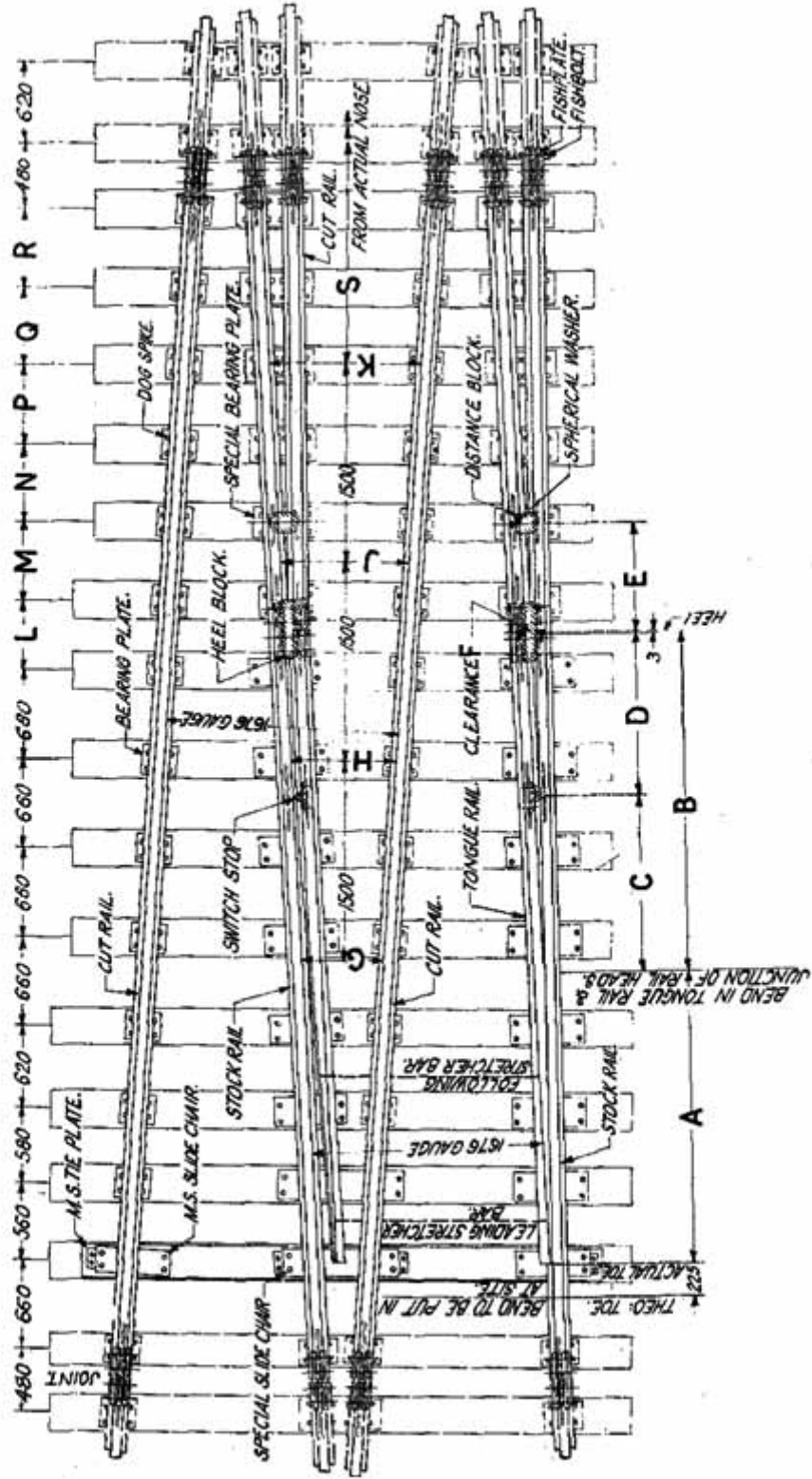
SECTION ON X.X.

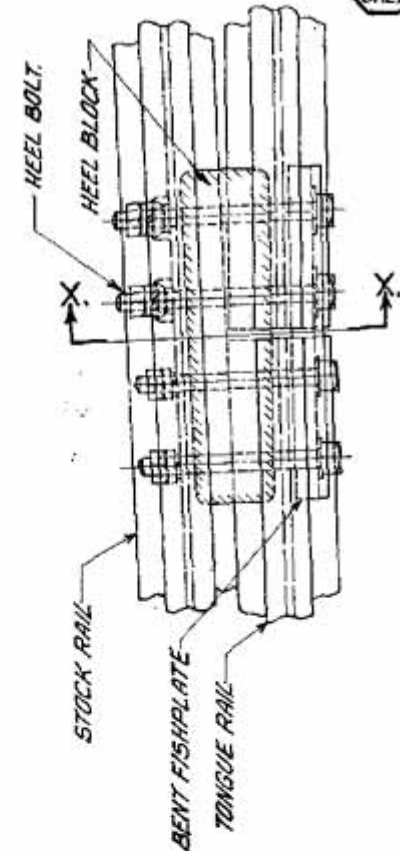
SWITCH ANGLE.....0°-36'-0"
DIVERGENCE AT HEEL OF SWITCH.....153-5
THROW AT TOE OF SWITCH.....115

TABLE OF DIMENSIONS.

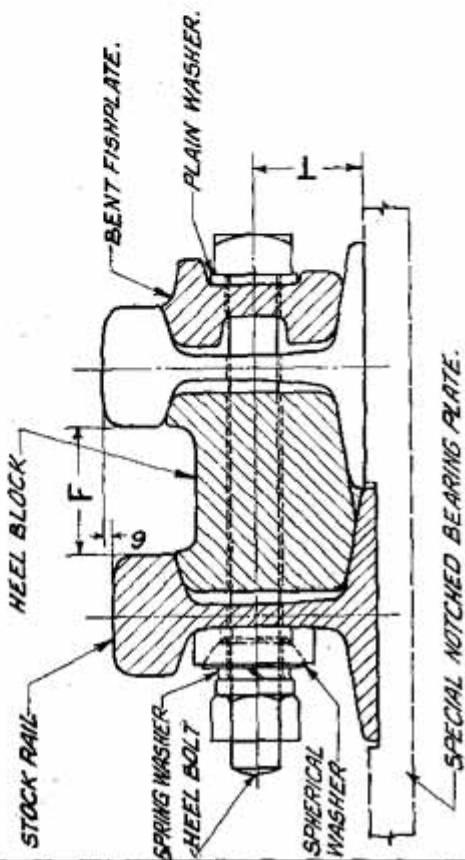
RAIL SECTION	ASSEMBLY DRG. NO.	D I M E N S I O N S																			
		A	B	C	D	E	F	G	H	J	K	L	M	N	P	Q	R	S	T	U	
UIC 60Kg	74 20265	3900	698	557	700	700	81-5	563-5	745-5	921-5	1097	600	480	510	550	550	540	526	4500	76-25	

**TYPICAL INTERMEDIATE PORTION FOR 1 IN 8½ DIAMOND CROSSING WITH
SINGLE SLIPS B. G.**





ENLARGED PLAN OF L.H. HEEL.



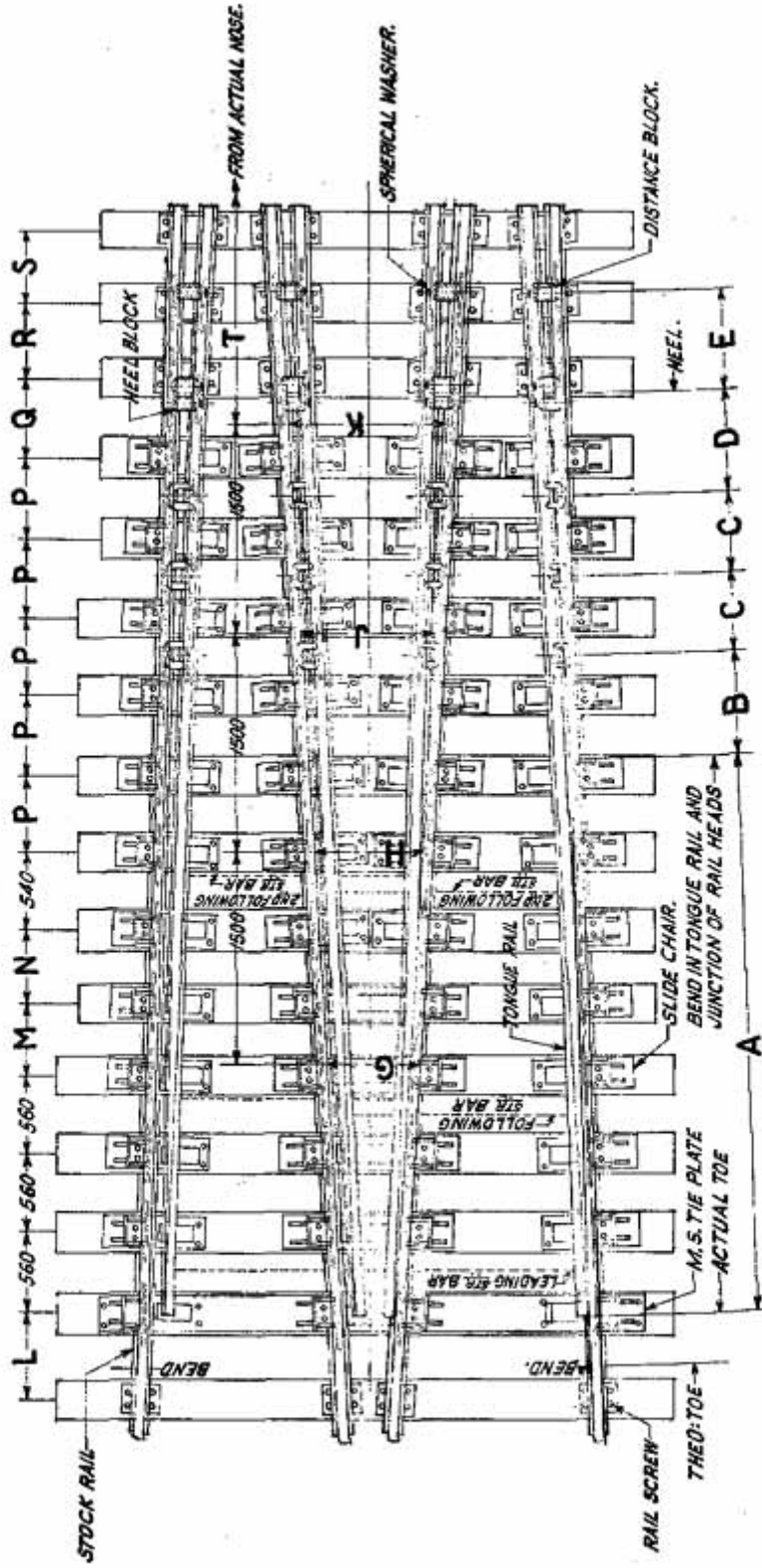
SECTION ON X-X.

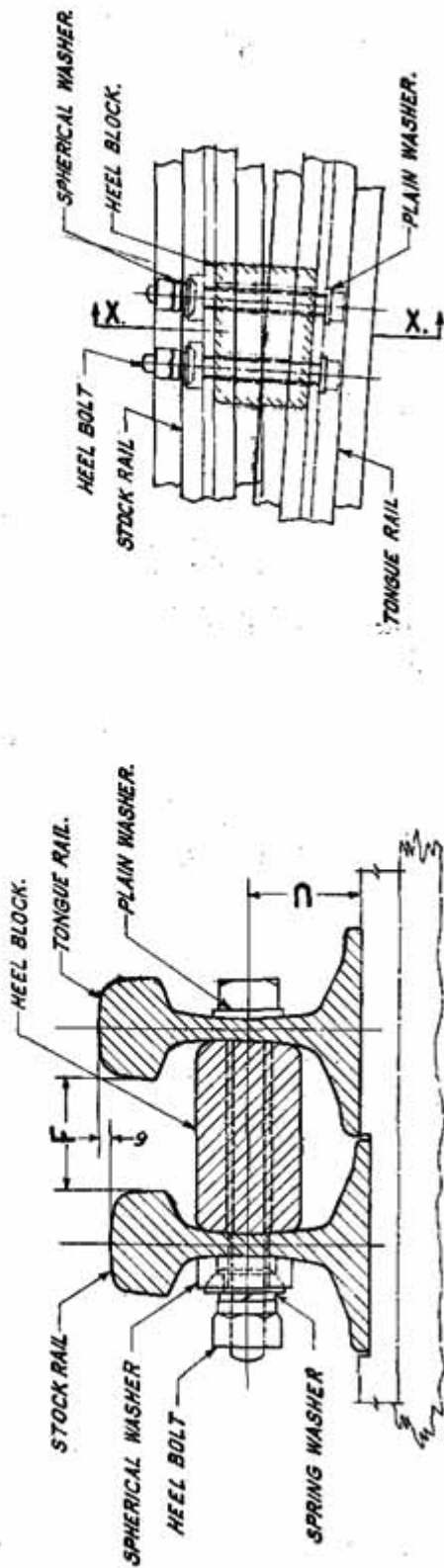
SWITCH ANGLE..... 34-27
 DIVERGENCE AT HEEL
 OF SWITCH..... 136
 THROW AT TOE
 OF SWITCH..... 115

TABLE OF DIMENSIONS.

RAIL SECTION	ASSEMBLY DRAWING NO.	DIMENSIONS (in mm)																	
		A	B	C	D	E	F	G	H	J	K	L	M	N	P	Q	R	S	T
90R.	71 20145	2523	1300	1223	850	69.3	566	741.5	917.5	1093.5	520	530	590	590	600	590	544	4500	60

**TYPICAL INTERMEDIATE PORTION FOR 1 IN 8½ DIAMOND CROSSING
WITH DOUBLE SLIPS B. G.**





SECTION ON X.X.

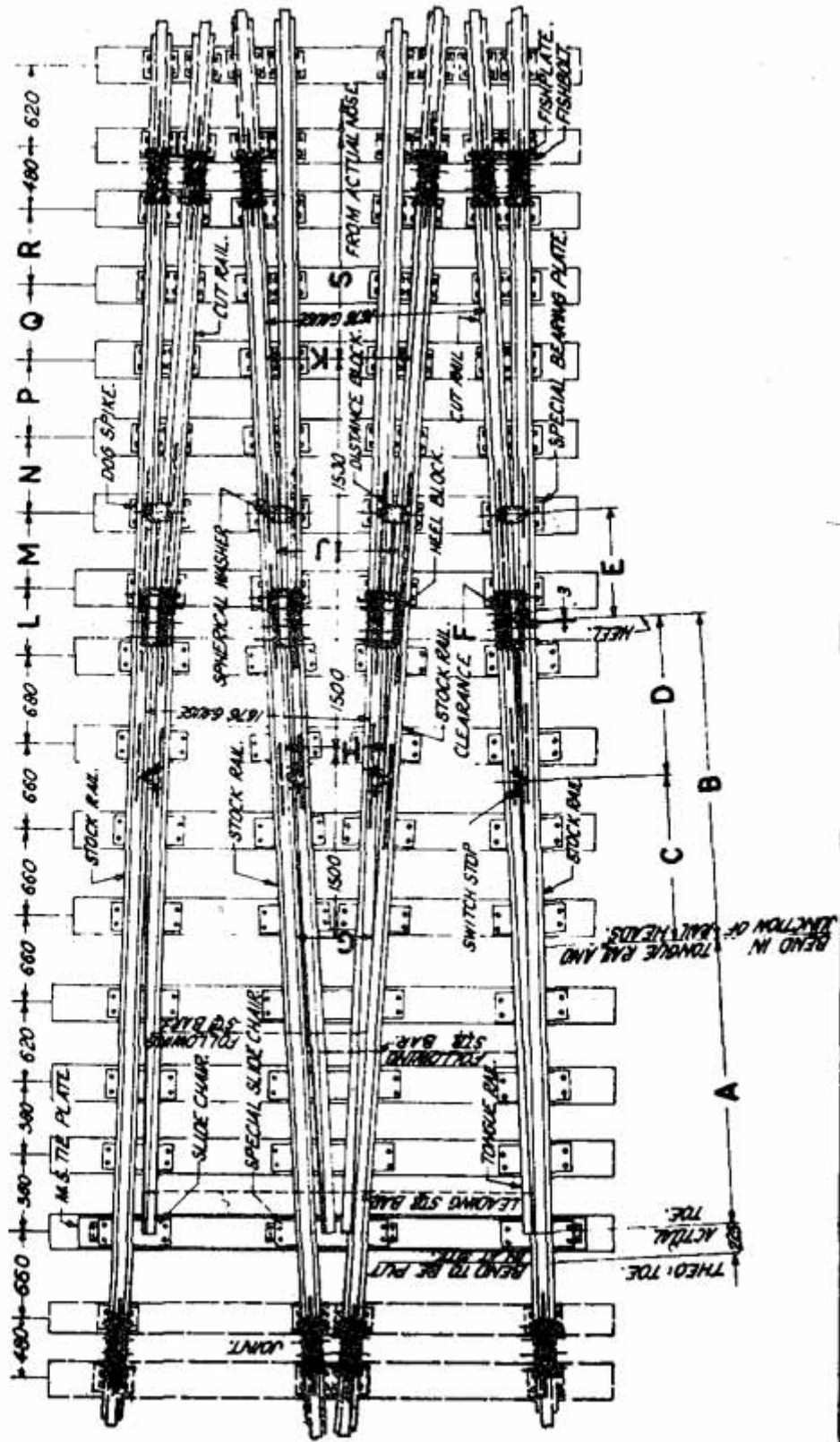
ENLARGED PLAN OF L.H. HEEL

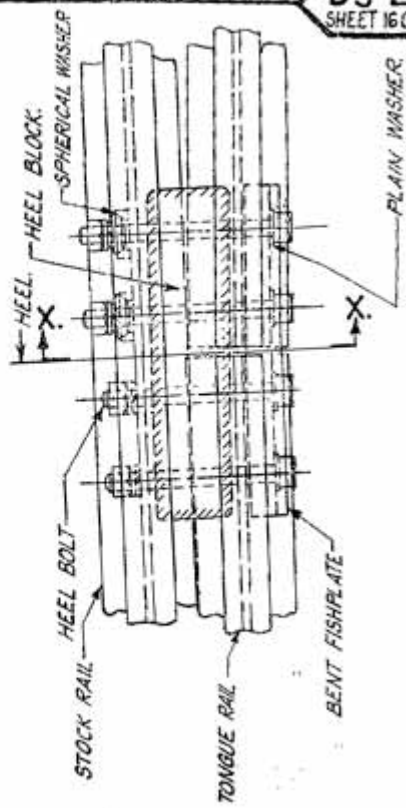
SWITCH ANGLE.....0°-36°-0"
 DIVERGENCE AT HEEL OF SWITCH.....153.5
 THROW AT TIE OF SWITCH.....115

TABLE OF DIMENSIONS

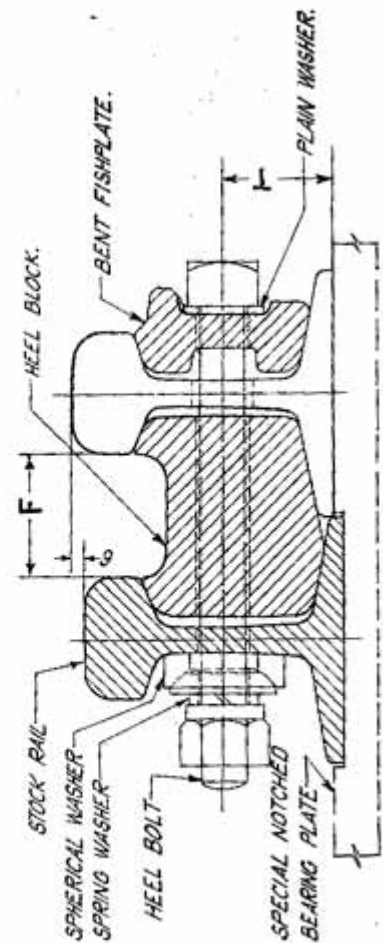
RAIL SECTION	ASSEMBLY DRG. NO.	DIMENSIONS (mm)																			
		A	B	C	D	E	F	G	H	J	K	L	M	N	P	Q	R	S	T	U	
UIC 60kg	TA 20266	3900	698	557	700	700	81.5	569.5	746.5	821.5	1097	600	480	510	550	550	550	540	526	4500	76.25

TYPICAL INTERMEDIATE PORTION FOR 1 IN 8 1/2 DIAMONDS WITH DOUBLE SLIPS B.G.





ENLARGED PLAN OF L.H. HEEL.

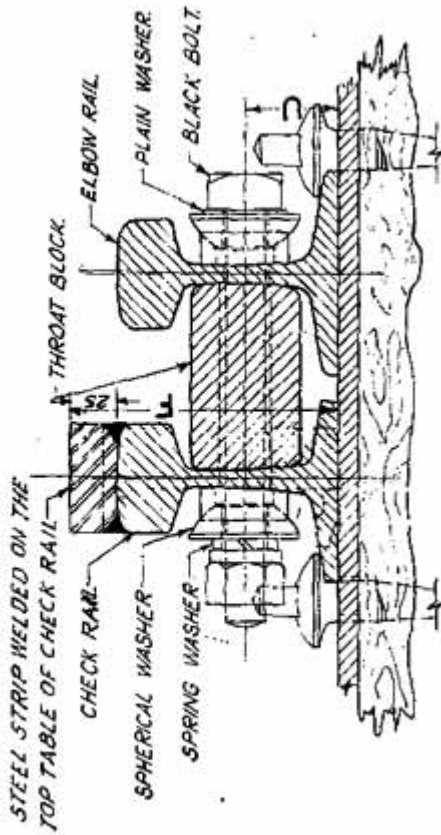


SECTION ON X.X.
(AT HEEL)

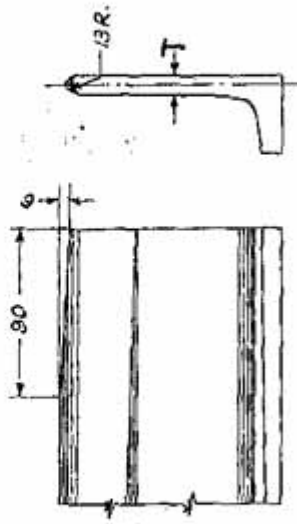
SWITCH ANGLE $1^{\circ} 34' - 27''$
 DIVERGENCE AT HEEL
 OF SWITCH 136
 THROW AT TOE
 OF SWITCH 115

TABLE OF DIMENSIONS.

RAIL ASSEMBLY SECTION DRG. NO.		DIMENSIONS (in mm)																
		A	B	C	D	E	F	G	H	J	K	L	M	N	P	Q	R	S
90 R.	TA 20146	2 202	1 300	1 223	650	69.3	566	741.5	917.5	1093.5	520	590	590	600	590	544	4 500	60



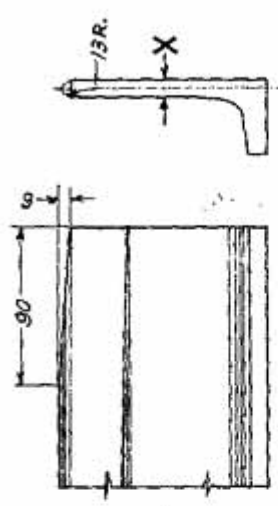
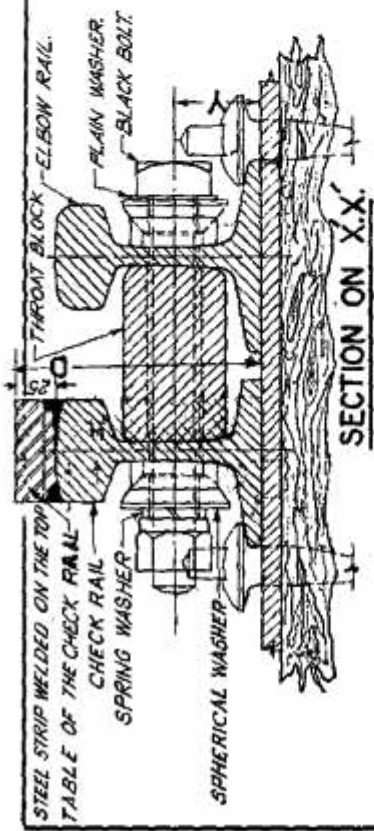
SECTION ON X.X.



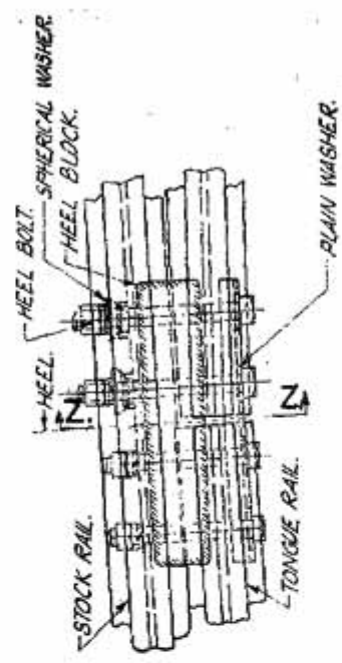
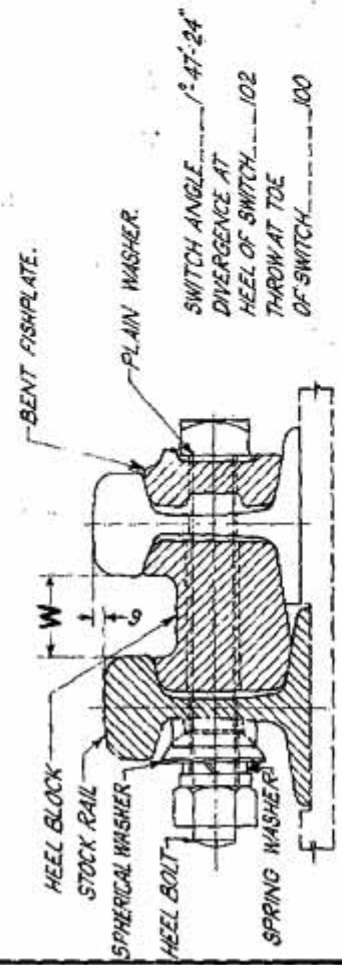
DETAIL OF NOSE OF CROSSING.

TABLE OF DIMENSIONS.

		D I M E N S I O N S (in mm)																		
RAIL	ASSEMBLY	A	B	C	D	E	F	G	H	J	K	L	M	N	P	Q	R	S	T	U
SECTION	DRG. NO.																			
60 R.	TA 20425	2 707	611.5	546	255	774	1303	446	394	95	422	597.5	773.5	620	620	620	610	1500	11-11	475



DETAIL OF NOSE OF CROSSING.



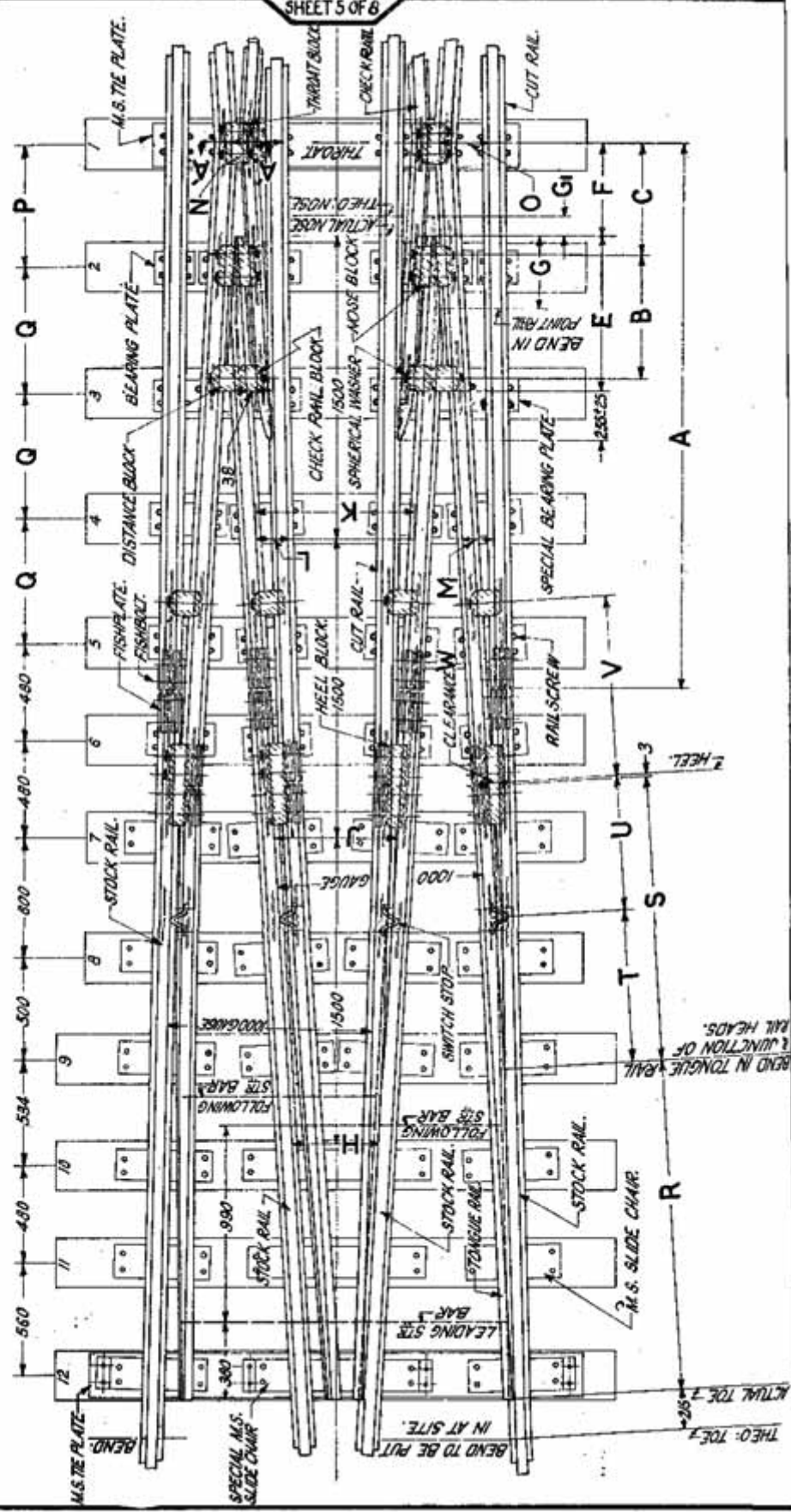
ENLARGED PLAN OF L.H. HEEL.

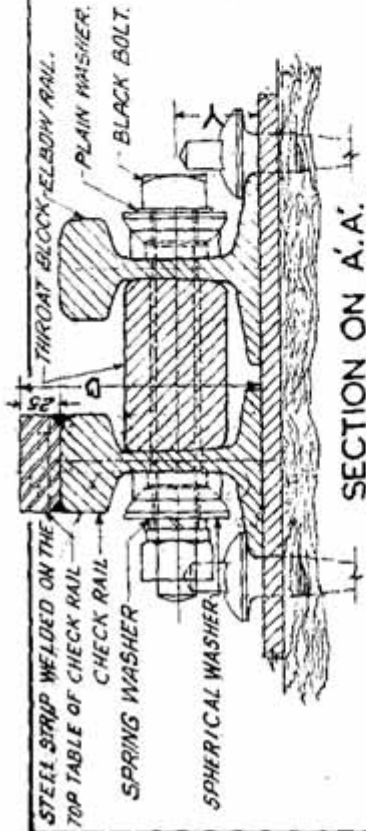
TABLE OF DIMENSIONS.

RAIL ASSEMBLY SECTION	DIMENSIONS (mm)														X	Y									
	A	B	C	D	E	F	G	G ₁	H	J	K	L	M	N			O	P	Q	R	S	T	U	V	W
60 R TA 20426	2 707	611.5	546	1 809	774	446	394	95	422	507.5	733.5	147	146	249.5	236.5	610	620	1 615	1 432	815	620	900	44-8	111	475

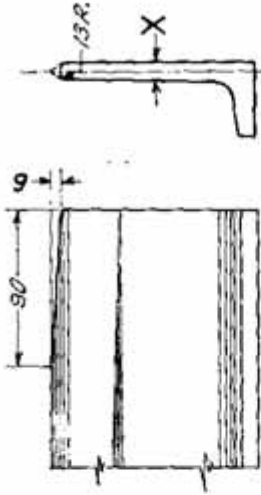
TYPICAL 1 IN 8½ OBTUSE CROSSING WITH SWITCH FOR DIAMONDS AND

DOUBLE SLIPS M.G.

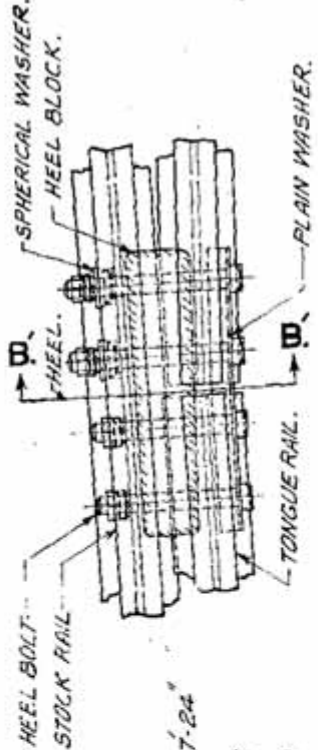




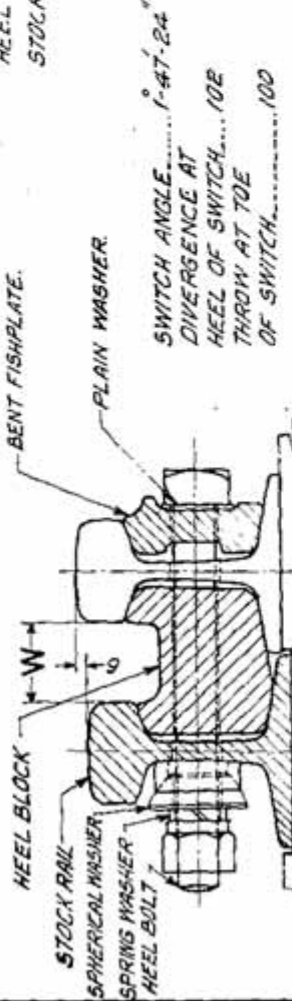
SECTION ON A.A.



DETAIL OF NOSE OF CROSSING.



ENLARGED PLAN OF L.H. HEEL.

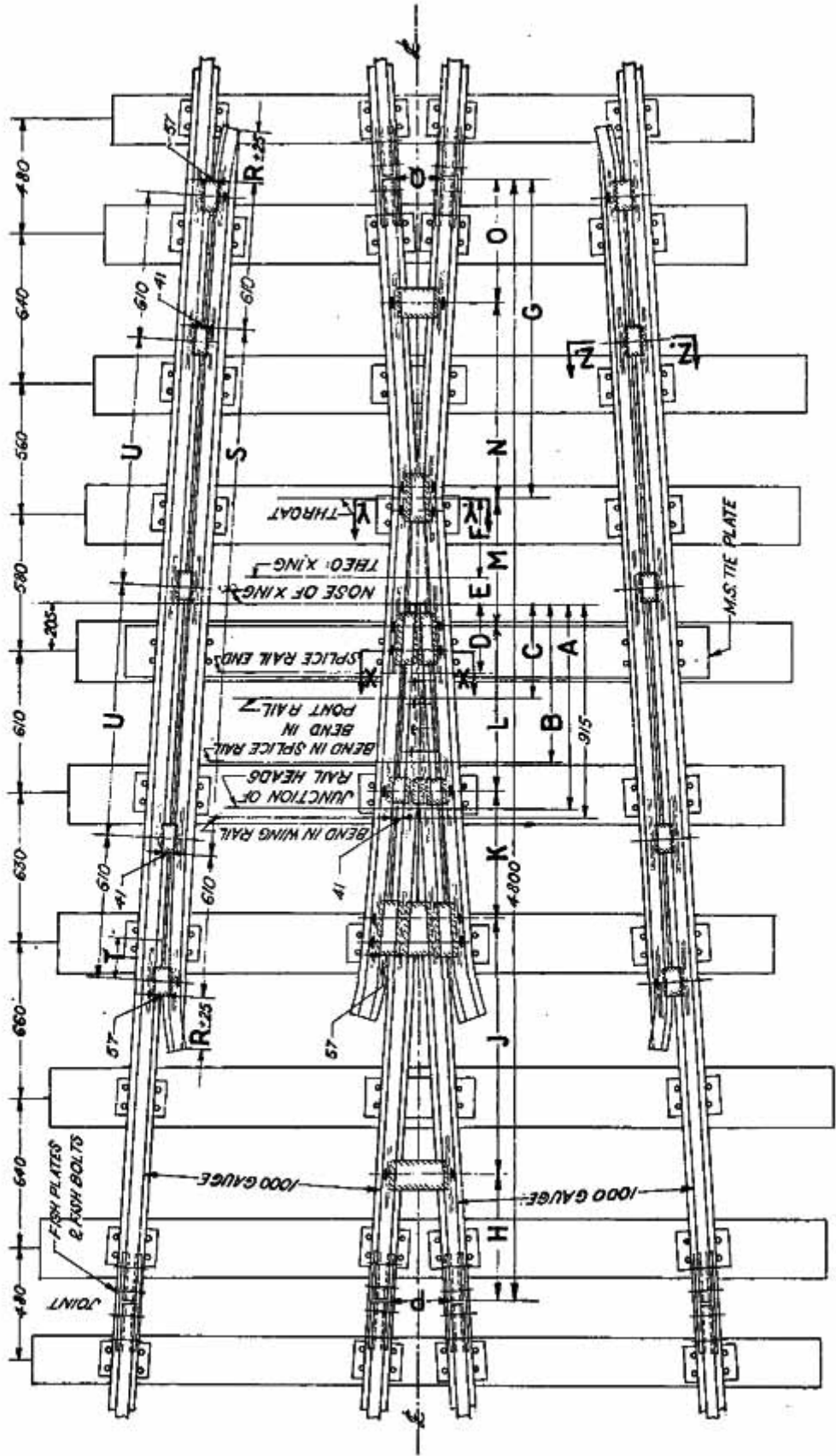


SECTION ON B.B.

TABLE OF DIMENSIONS.

RAIL SECTION	ASSEMBLY ORG.N ^o	DIMENSIONS (IN MM)																							
		A	B	C	D	E	F	G	H	J	K	L	M	N	O	P	Q	R	S	T	U	V	W	X	Y
60 R.	TA 20427	2 707	611.5	5-4-6	139.3	774	446	394	95	422	597.5	773.5	147	146	249-5239.5	610	620	1615	1432	615	620	900	448	11-11	47.5

TYPICAL I IN 8 1/2 CROSSING M. G.



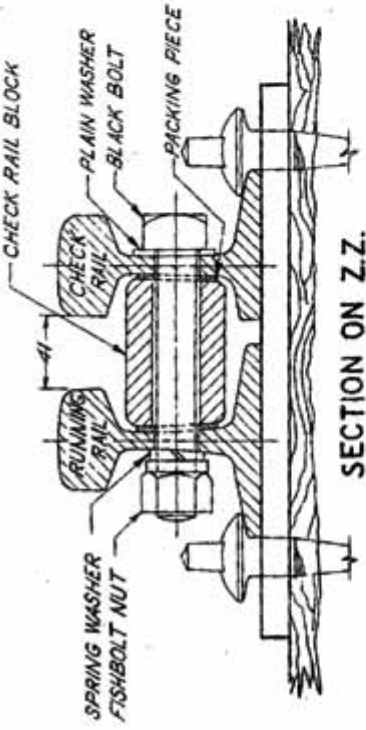
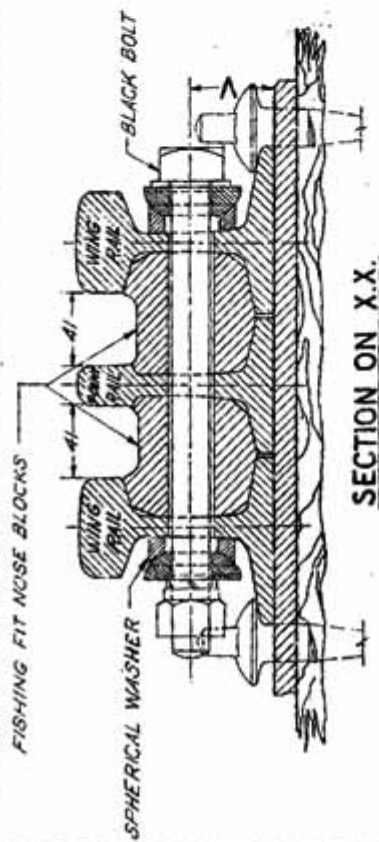
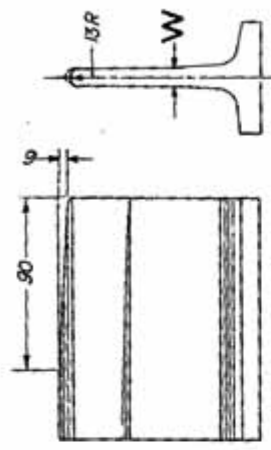
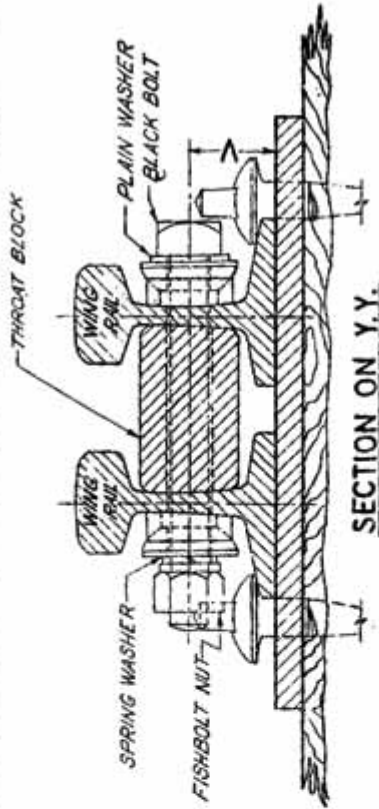


TABLE OF DIMENSIONS

RAIL SECTION	ASSEMBLY DRAWING NO	DIMENSIONS (IN MM)																					
		A	B	C	D	E	F	G	H	J	K	L	M	N	O	P	Q	R	S	T	U	V	W
60R.	TA 20428	881	686	393	293	95	350	1370	510	1130	535	710	565	825	545	247	202	230	2255	165	1065	475	111

TYPICAL 1 IN $8\frac{1}{2}$ OBTUSE CROSSING FOR MOVABLE SWITCH B. G.

DIAMONDS WITH DOUBLE SLIPS B. G.

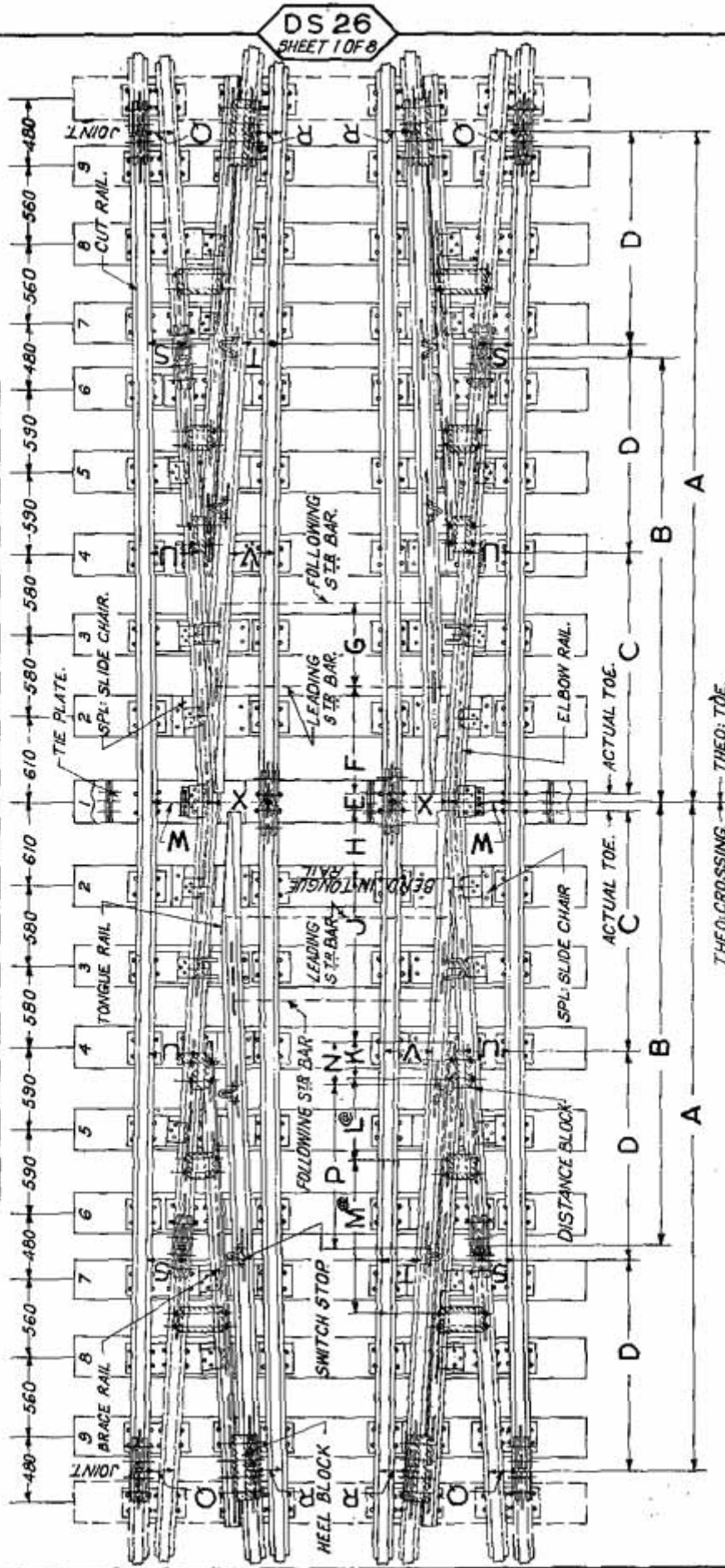


TABLE OF DIMENSIONS.

RAIL SECTION	ASSEMBLY DRG. NR	DIMENSIONS (mm)																					
		A	B	C	D	E	F	G	H	J	K	L	M	N	P	Q	R	S	T	U	V	W	X
52 Kg	TA 20221	4790	3190	1724	1500	132	880	600	506	1175	230	600	1100	293	1200	208	209	269	270	340	341	436	440
90 R.	TA 20137	4790	3190	1731	1500	118	800	600	511	1173	230	600	1100	295	1200	208	209	269	270	340	341	436	440

NOTE:- ASSEMBLY DRAWING NR TA 20221 & TA 20137 ARE WITH RAIL SCREWS/PLATE SCREWS.
 @ THE DISTANCES L. & M. ARE FROM 15 $\frac{1}{2}$ BOLT OF DISTANCE BLOCKS WITH TWO BOLTS USED FOR TA 20218 & TA 20134.

TYPICAL INTERMEDIATE PORTION FOR 1 IN 8½

MOVABLE SWITCH DIAMONDS B. G.

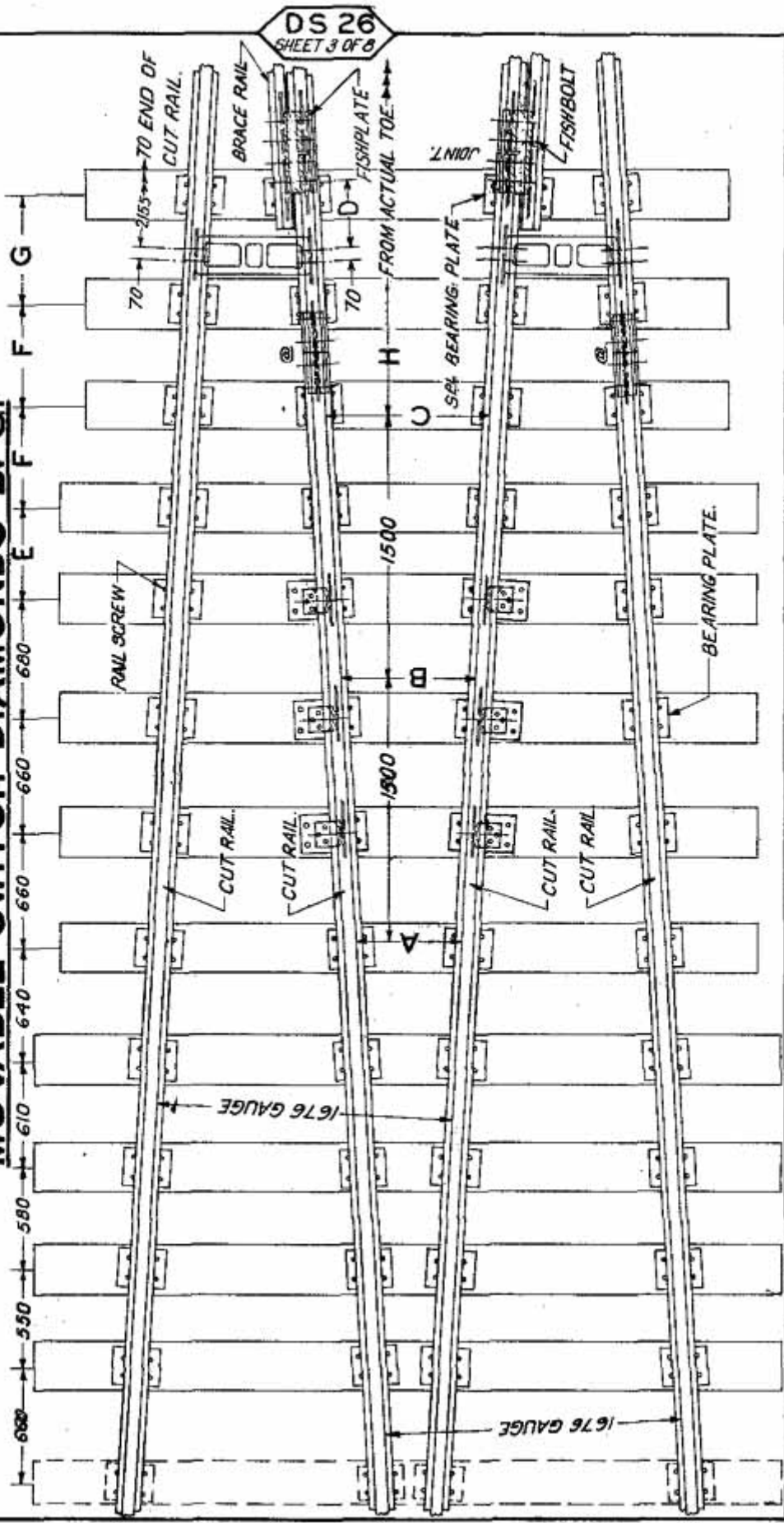


TABLE OF DIMENSIONS.

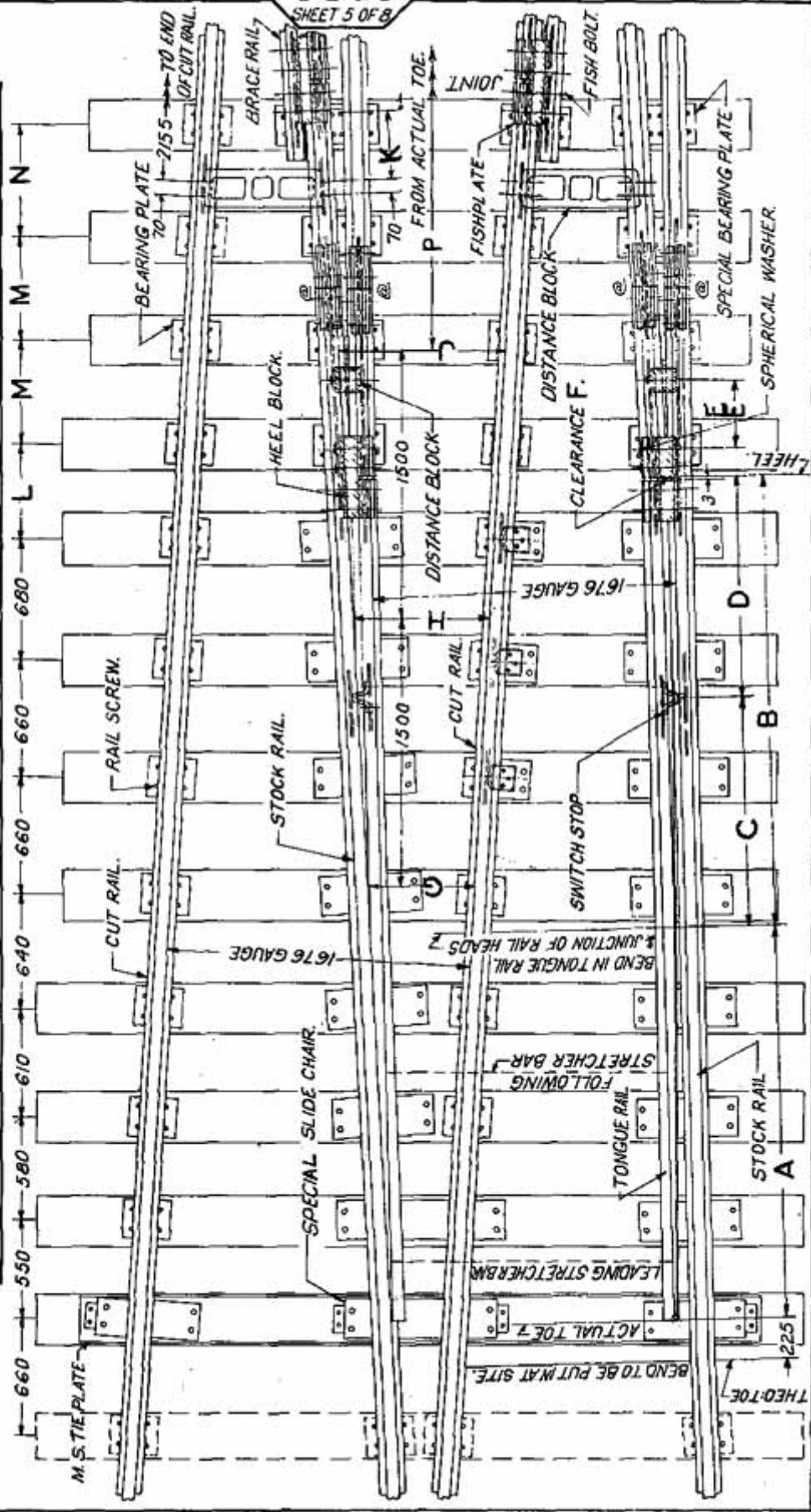
RAIL SECTION	ASSEMBLY DRG: N ^o	D I M E N S I O N S							
		A	B	C	D	E	F	G	H
52 kg	TA 20218	590	766	941	306	537	580	630	6 224
90 R.	TA 20134	590	766	941	386	523	580	630	6 231

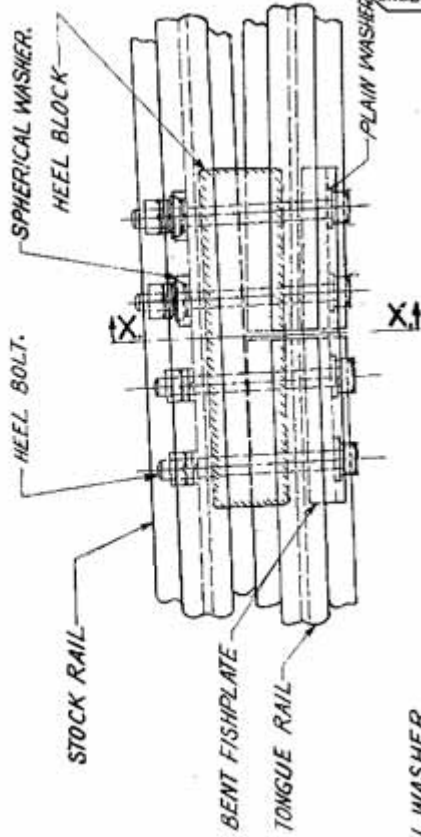
NOTE:-

1. ASSEMBLY DRG: N^{os} TA 20218 & TA 20134 ARE WITH RAIL SCREWS/PLATE SCREWS.
2. EXTRA GLUED INSULATED RAIL JOINTS FOR TA 20218 AND TA 20134 SHOWN THUS.....@

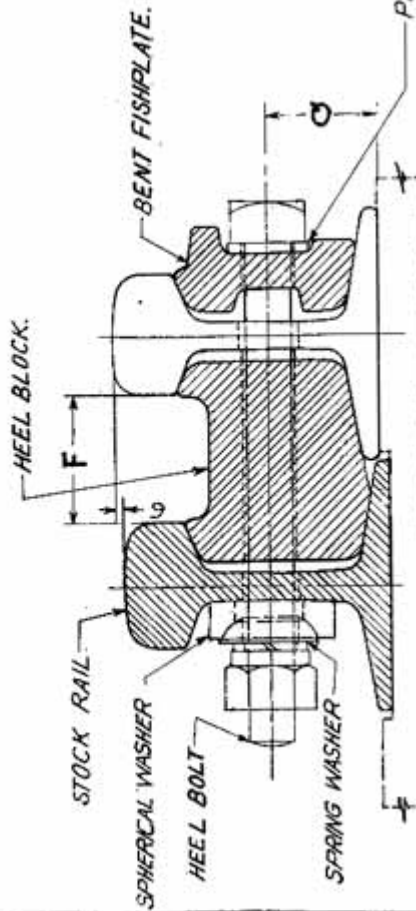
TYPICAL INTERMEDIATE PORTION FOR 1 IN 8½ MOVABLE SWITCH DIAMONDS WITH SINGLE SLIPS B. G.

DS 26
SHEET 5 OF 8





ENLARGED PLAN OF L.H. HEEL.



SECTION ON X-X.

SWITCH ANGLE-----1°-34'-27"
DIVERGENCE AT HEEL
OF SWITCH-----136
THROW AT TOE
OF SWITCH-----115

NOTE:-

1. ASSEMBLY DRG. N^o TA 20219 & TA 20135 ARE WITH RAIL SCREWS/PLATE SCREWS.
2. EXTRA GLUED INSULATED RAIL JOINTS FOR TA 20219 & TA 20135 ARE SHOWN THUS. @

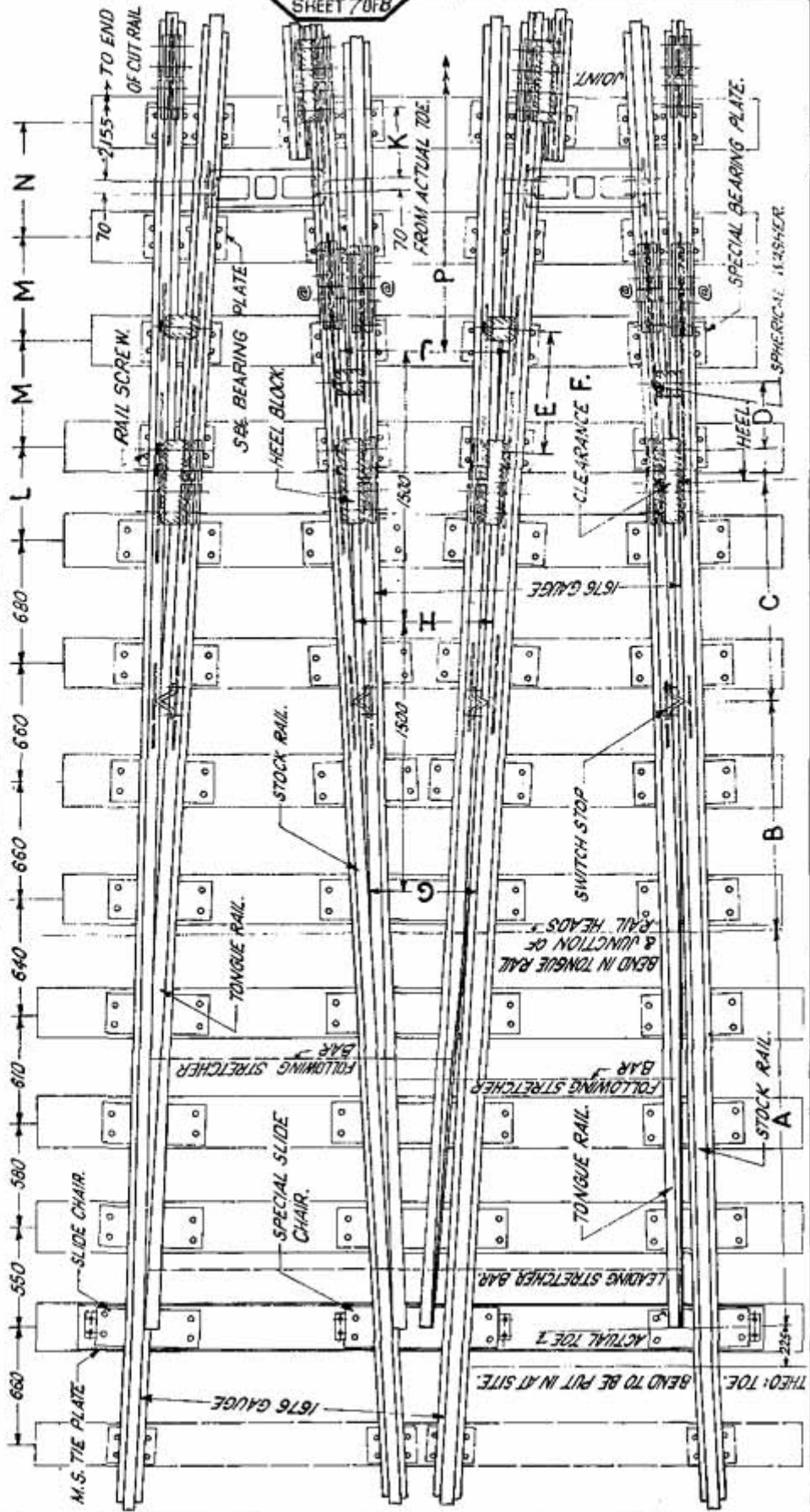
TABLE OF DIMENSIONS.

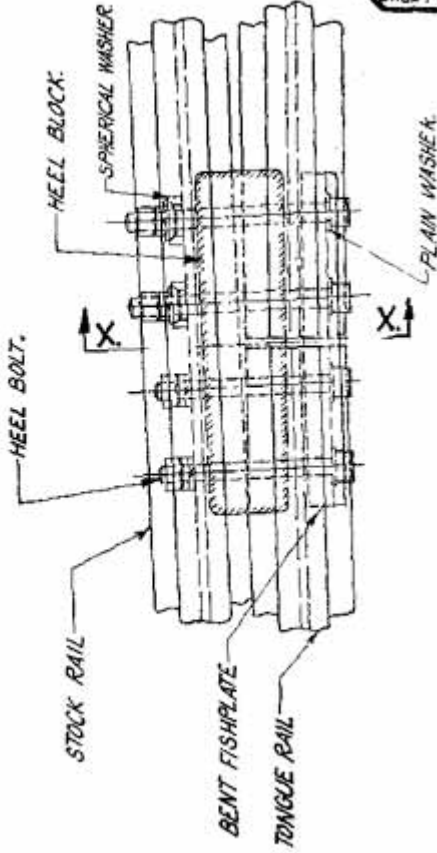
RAIL SECTION	ASSEMBLY DRG. N ^o	DIMENSIONS (mm)														
		A	B	C	D	E	F	G	H	J	K	L	M	N	P	Q
52kg	TA 20219	2215	2510	1345	1165	325	69	590	766	941	306	537	580	630	6224	67
90R	TA 20135	2202	2523	1300	1223	400	69.3	590	766	941	386	523	580	630	6231	60

TYPICAL INTERMEDIATE PORTION FOR 1 IN 8½ MOVABLE SWITCH DIAMONDS

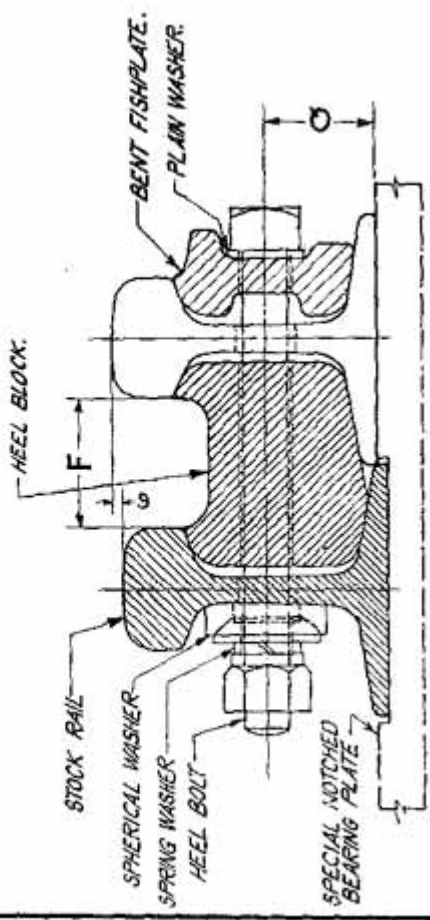
WITH DOUBLE SLIPS B. G.

DS 26
SHEET 70FB





ENLARGED PLAN OF L.H. HEEL.



SECTION ON X.X.

SWITCH ANGLE.....1° 34' 27"
 DIVERGENCE AT
 HEEL OF SWITCH.....136
 THROW AT TOE
 OF SWITCH.....115

NOTE:-

1. ASSEMBLY DRG: NR TA 20220 & TA 20336 ARE WITH RAIL SCREWS/PLATE SCREWS.
2. EXTRA GLUED INSULATED RAIL JOINTS FOR TA 20220 & TA 20336 ARE SHOWN THUS.....@

TABLE OF DIMENSIONS.

RAIL SECTION	ASSEMBLY DRG: N ^o	DIMENSIONS (in mm)														
		A	B	C	D	E	F	G	H	J	K	L	M	N	P	Q
52 kg	TA 20220	2 215	1345	1165	325	582	69	590	766	941	306	537	580	630	6 224	67
90 R.	TA 20336	2 202	1300	1223	400	679	69.3	590	766	941	365	523	580	630	6 231	60

TYPICAL 1 IN 10 OBTUSE CROSSING FOR MOVABLE SWITCH DIAMONDS AND DOUBLE SLIPS B. G.

DS 27
SHEET 1 OF 10

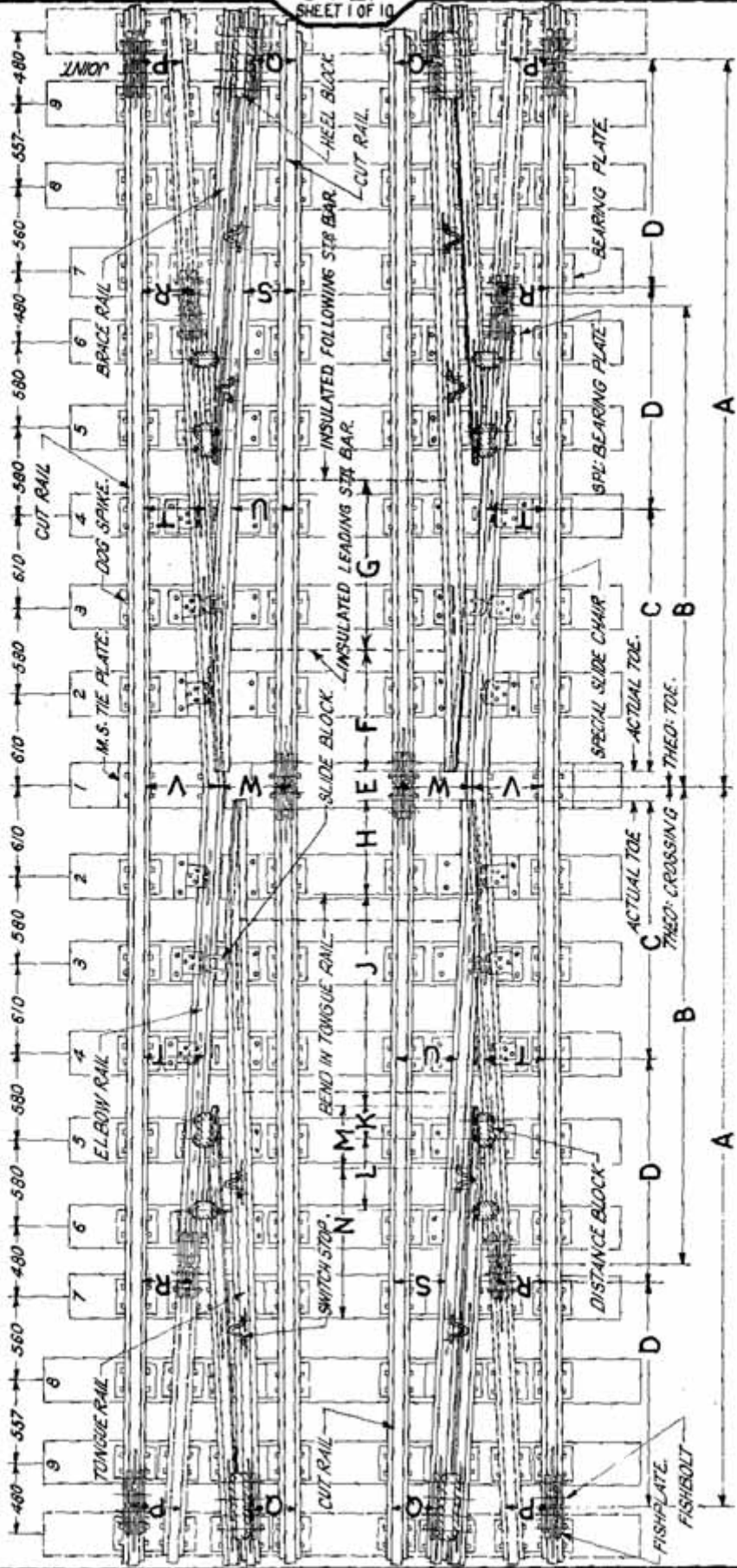


TABLE OF DIMENSIONS.

RAIL SECTION	ASSEMBLY DRAWING NO.	DIMENSIONS (mm)																				
		A	B	C	D	E	F	G	H	J	K	L	M	N	P	Q	R	S	T	U	V	W
90 R.	TA20132	4797	3200	1727	1500	140	800	1150	600	1448	230	480	450	1000	276	277	336	337	401	402	486	489

**TYPICAL INTERMEDIATE PORTION FOR 1 IN 10 MOVABLE SWITCH
DIAMONDS B. G.**

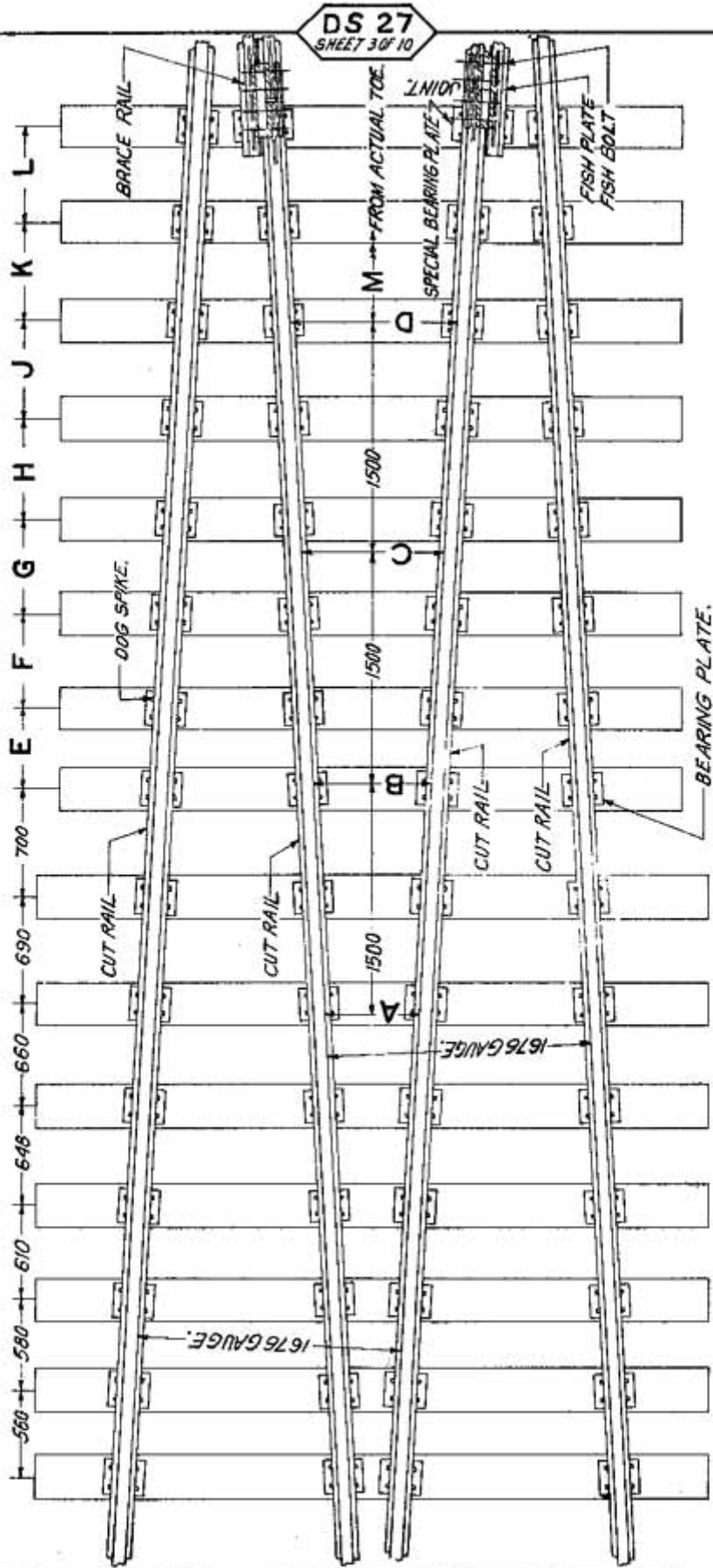
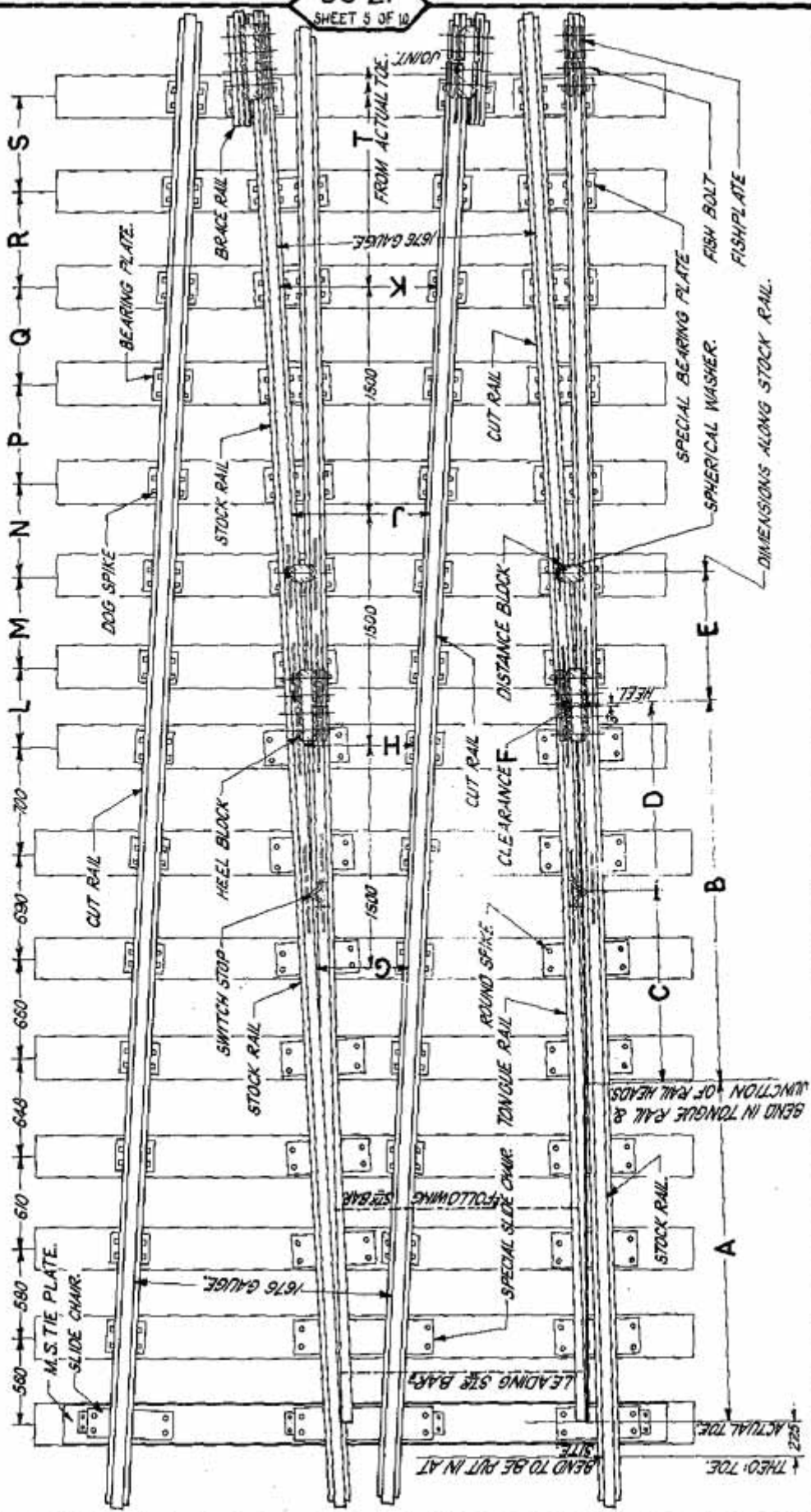


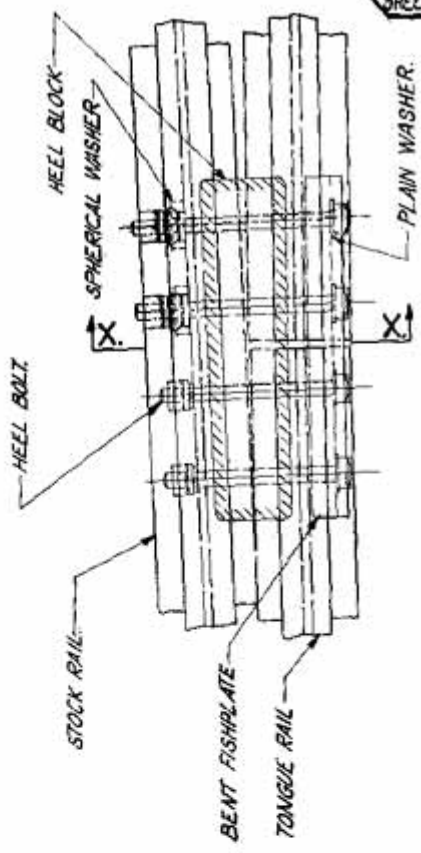
TABLE OF DIMENSIONS.

		<i>DIMENSIONS</i> <small>(mm)</small>											
<i>RAIL SECTION</i>	<i>ASSEMBLY DRG. NO.</i>	A	B	C	D	E	F	G	H	J	K	L	M
90 R.	TA 20129	601	751	900	1050	520	610	620	650	640	640	630	6227

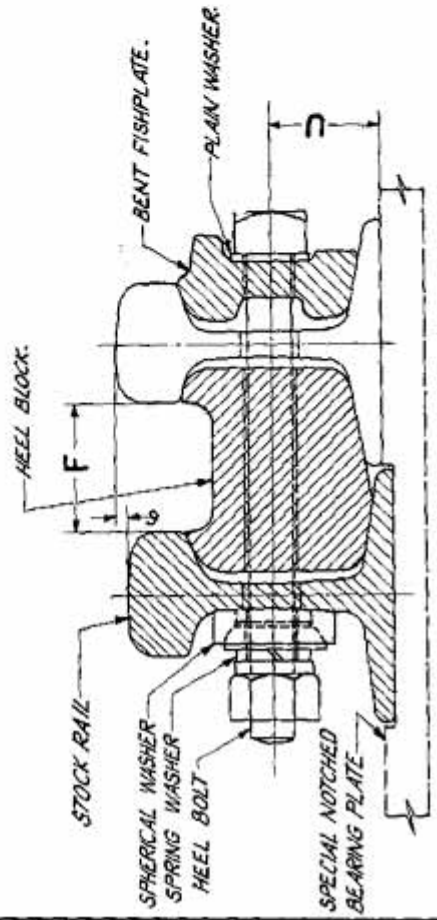
3 2004 1213 10110111 01110111

**TYPICAL INTERMEDIATE PORTION FOR 1 IN 10 MOVABLE SWITCH DIAMONDS
WITH SINGLE SLIPS B. G.**





ENLARGED PLAN OF L.H. HEEL.



SECTION ON XX.
(AT HEEL)

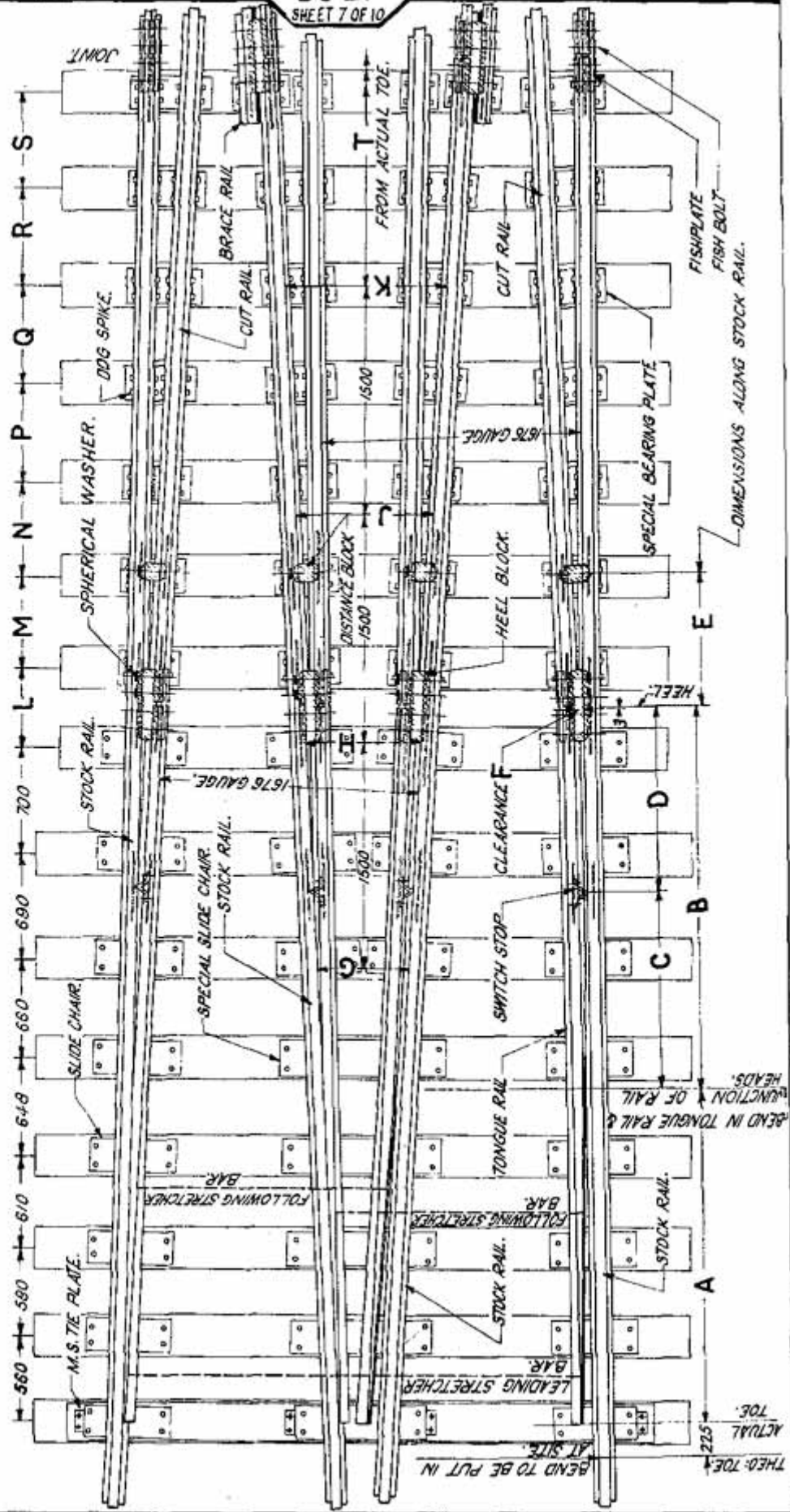
SWITCH ANGLE.....1°34'27"
 DIVERGENCE AT HEEL
 OF SWITCH.....136
 THROW AT TIDE
 OF SWITCH.....115

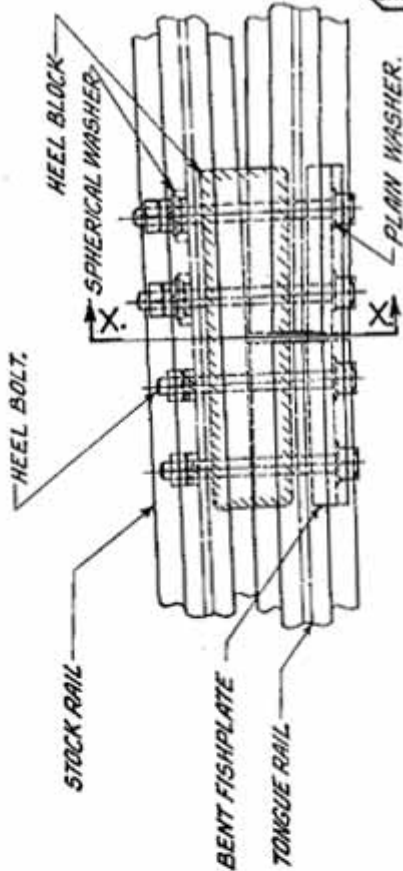
TABLE OF DIMENSIONS.

RAIL SECTION	ASSEMBLY DRG. NO.	DIMENSIONS (mm)																		
		A	B	C	D	E	F	G	H	J	K	L	M	N	P	Q	R	S	T	U
90.R.	TA 20130	2202	2523	1300	1223	871	69.3	601	751	900	1050	520	610	520	650	540	640	630	6227	60

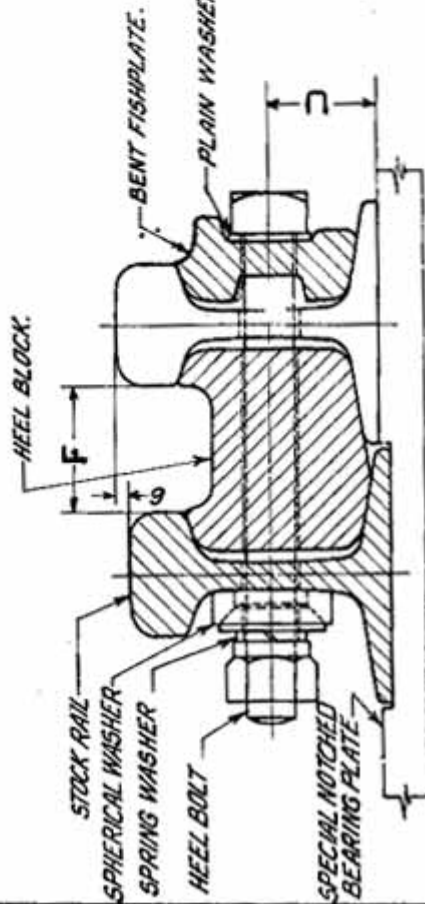
TYPICAL INTERMEDIATE PORTION FOR 1 IN 10 MOVABLE SWITCH DIAMONDS WITH DOUBLE SLIPS B. G.

DS 27
SHEET 7 OF 10





ENLARGED PLAN OF L.H. HEEL.



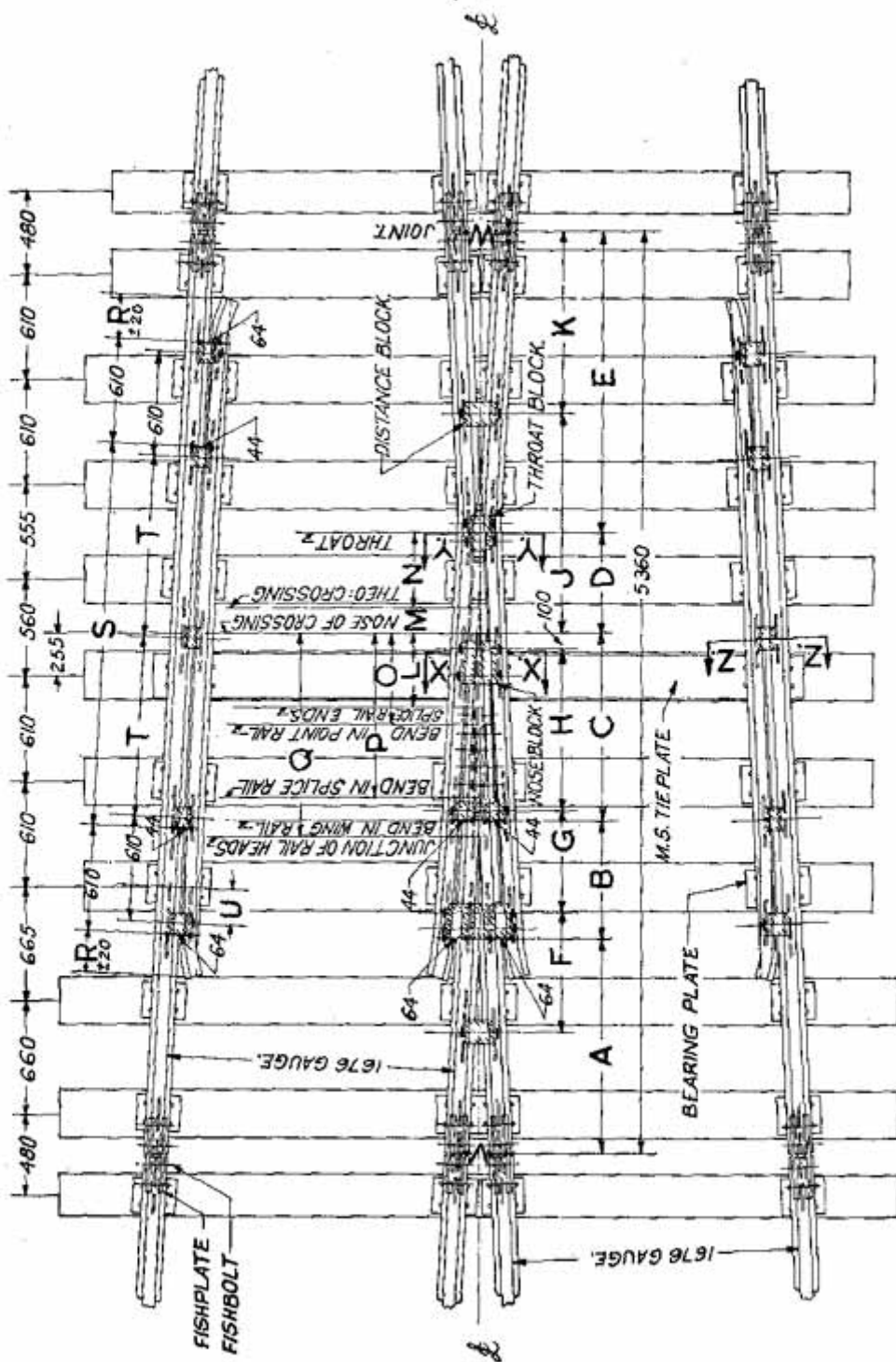
SECTION ON X-X.
(AT HEEL)

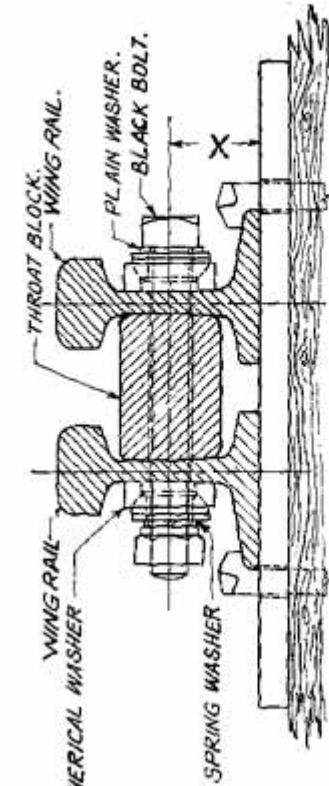
SWITCH ANGLE.....1-34-27
DIVERGENCE AT HEEL
OF SWITCH.....136
THROW AT TOE
OF SWITCH.....115

TABLE OF DIMENSIONS.

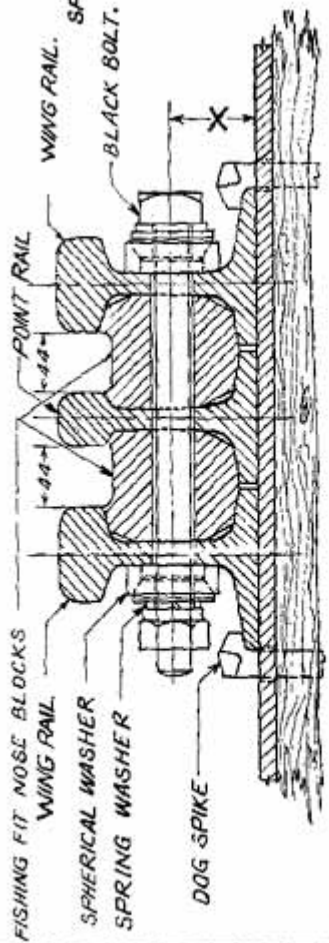
RAIL ASSEMBLY SECTION DRG: N ^o		DIMENSIONS (mm)																		
		A	B	C	D	E	F	G	H	J	K	L	M	N	P	Q	R	S	T	U
90 R.	7A 20131	2202	2523	1300	1223	871	69.3	601	751	900	1050	520	610	620	650	640	640	630	6227	60

TYPICAL 1 IN 10 ACUTE CROSSING B. G.

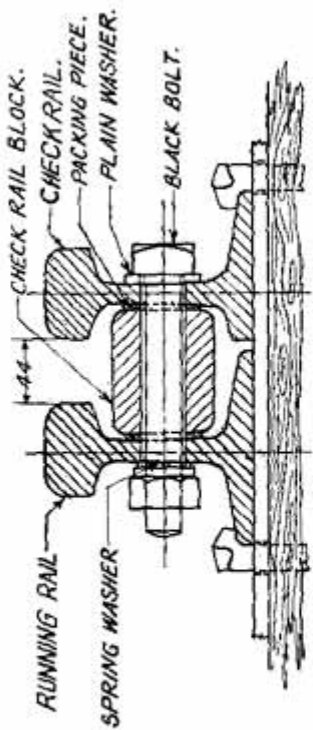




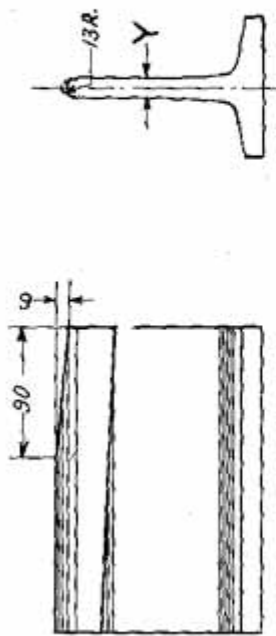
SECTION ON X-X.



SECTION ON Y-Y.



SECTION ON Z-Z.



DETAIL OF NOSE OF CROSSING.
TABLE OF DIMENSIONS.

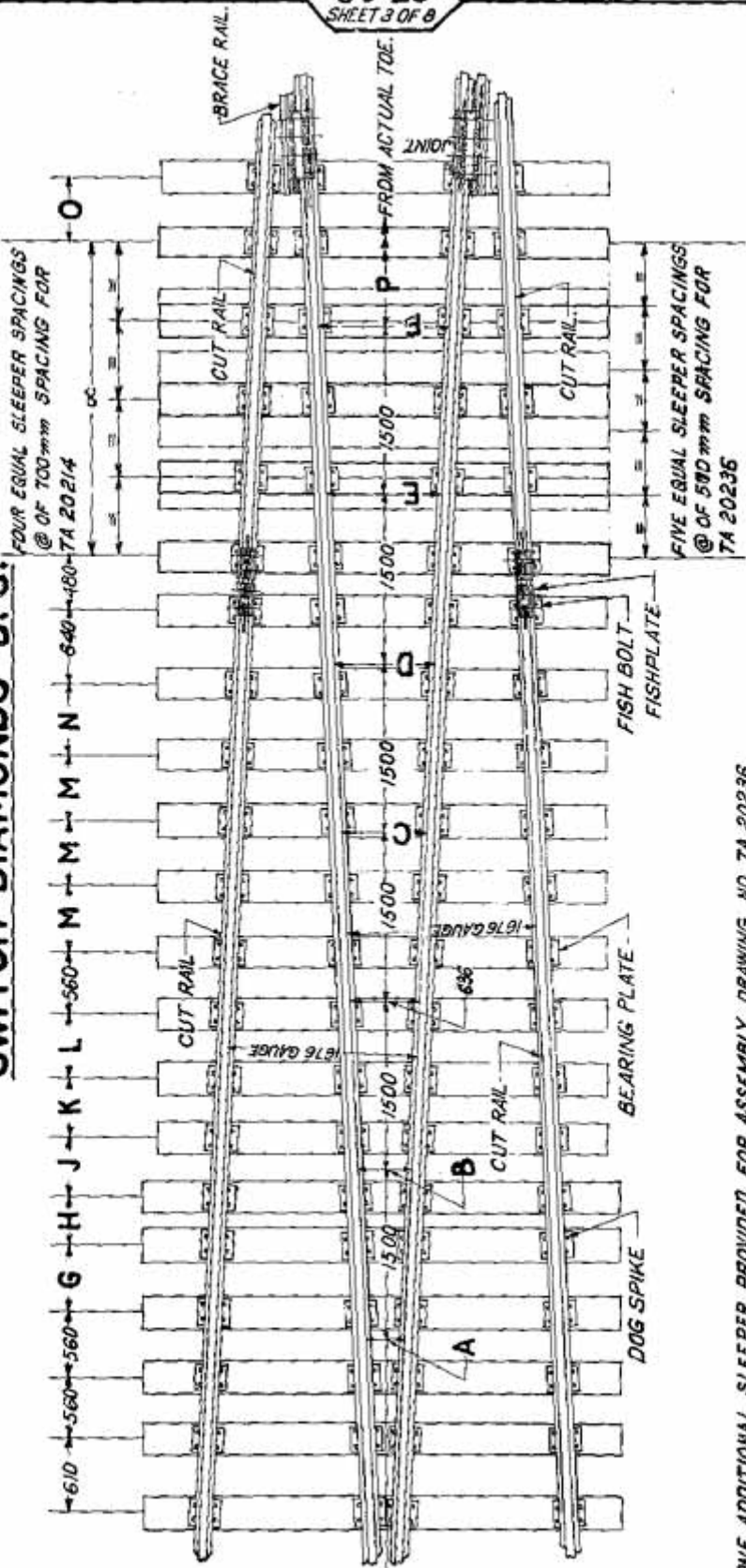
RAIL ASSEMBLY SECTION	DRG: N ^o	DIMENSIONS (mm)													X	Y									
		A	B	C	D	E	F	G	H	J	K	L	M	N			O	P	Q	R	S	T	U	V	W
30 R.	TA 20133	1260	690	1090	580	1740	700	590	940	1270	1050	430	140	440	530	960	1200	255	2235	1055	210	184	217	60	1389

TABLE OF DIMENSIONS.

RAIL SECTION	ASSEMBLY DRG: N ^o	DIMENSIONS (^m mm)																				
		A	B	C	D	E	F	G	H	J	K	L	M	N	P	Q	R	S	T	U	V	W
52 Kg	TA 20217	5028	3550	1935	1500	186	750	1100	713	1748	180	350	350	900	262	263	311	312	364	365	445	446
90 R.	TA 20239	5009	3547	1926	1500	166	800	1100	719	1736	180	350	350	900	263	264	311	312	365	366	443	446

INDUSTRIAL MANUFACTURING CORPORATION, CALIFORNIA

**TYPICAL INTERMEDIATE PORTION FOR 1 IN 12 MOVABLE
SWITCH DIAMONDS B. G.**

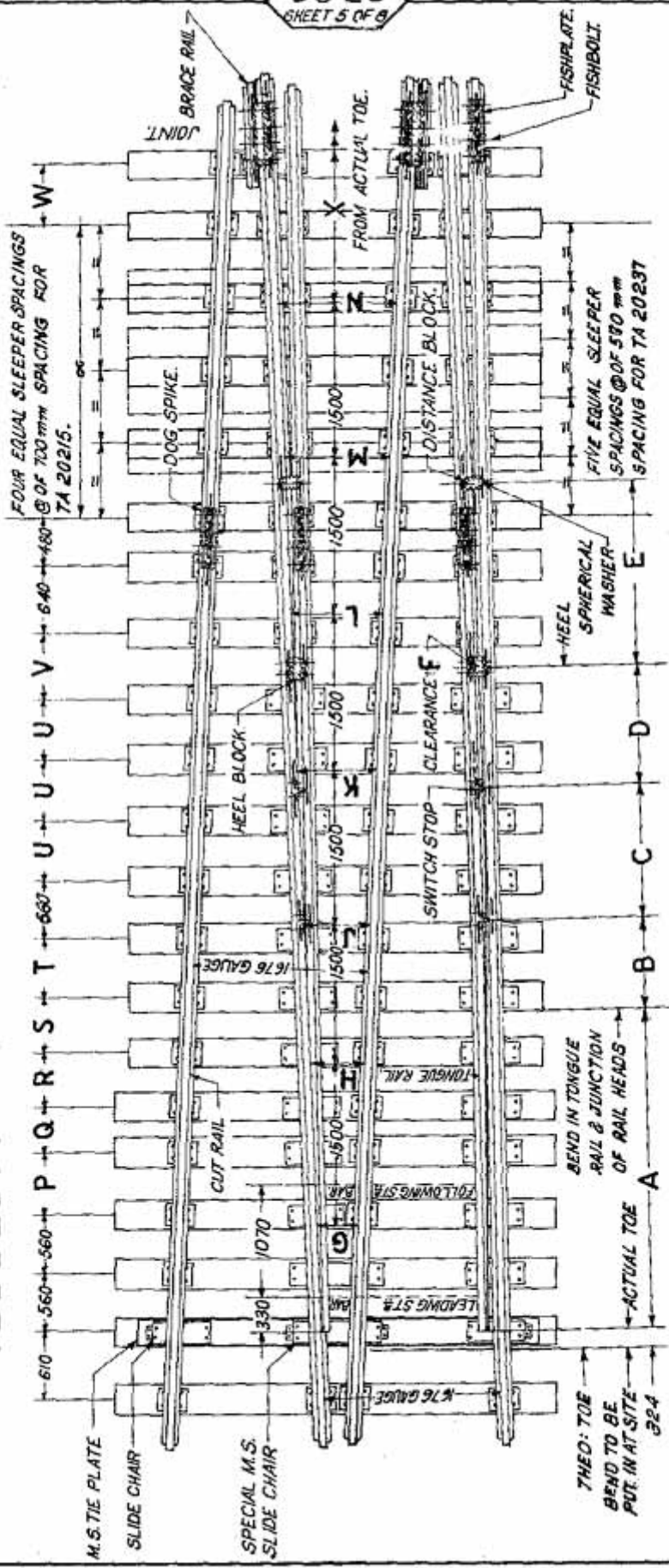


NOTE: ONE ADDITIONAL SLEEPER PROVIDED FOR ASSEMBLY DRAWING NO. TA 20236 IN THE VICINITY MARKED 'c' AFTER READJUSTMENT OF SLEEPER SPACINGS, AS INDICATED IN THE BOTTOM.

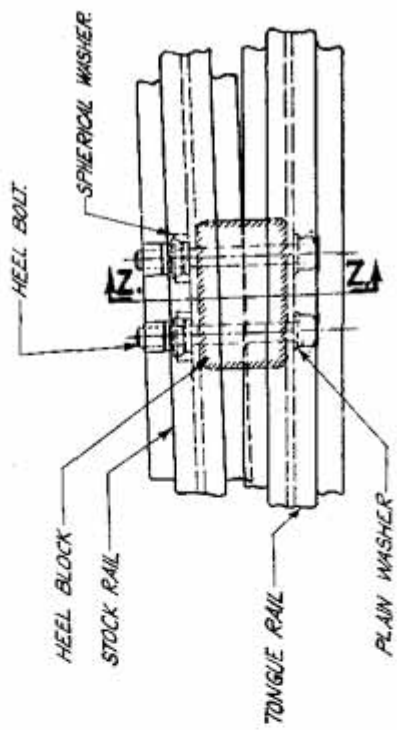
TABLE OF DIMENSIONS.

RAIL SECTION	ASSEMBLY DRG. No.	DIMENSIONS (mm)														
		A	B	C	D	E	F	G	H	J	K	L	M	N	O	P
52 Kg	TA 20214	386	511	761	885	1010	1135	560	480	510	540	560	590	630	595	6528
90 R.	TA 20236	387	512	761	886	1011	1136	610	530	530	530	530	560	640	544	6426

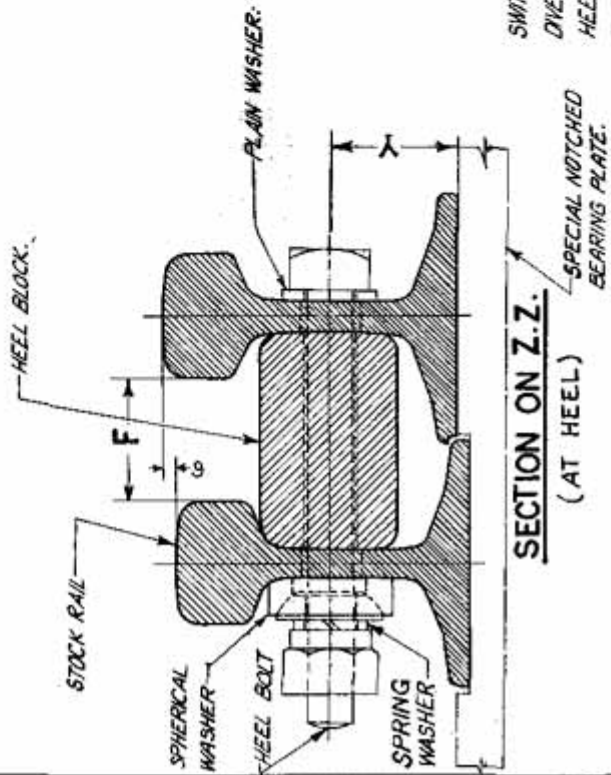
TYPICAL INTERMEDIATE PORTION FOR 1 IN 12 MOVABLE SWITCH DIAMONDS WITH SINGLE SLIPS B. G.



NOTE: ONE ADDITIONAL SLEEPER PROVIDED FOR ASSEMBLY DRAWING NO. TA 20237 IN THE VICINITY MARKED 'x' AFTER READJUSTMENT OF SLEEPER SPACINGS, AS INDICATED IN THE BOTTOM.



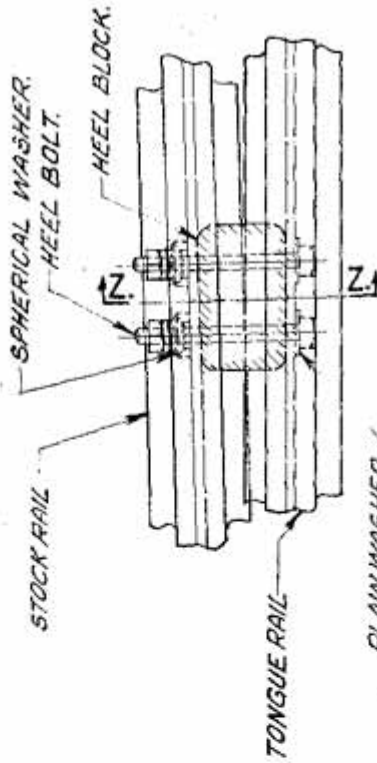
ENLARGED PLAN OF L.H. HEEL.



SWITCH ANGLE.....1° 8'-0"
 DIVERGENCE AT
 HEEL OF SWITCH.....133
 THROW AT TDE
 OF SWITCH.....115

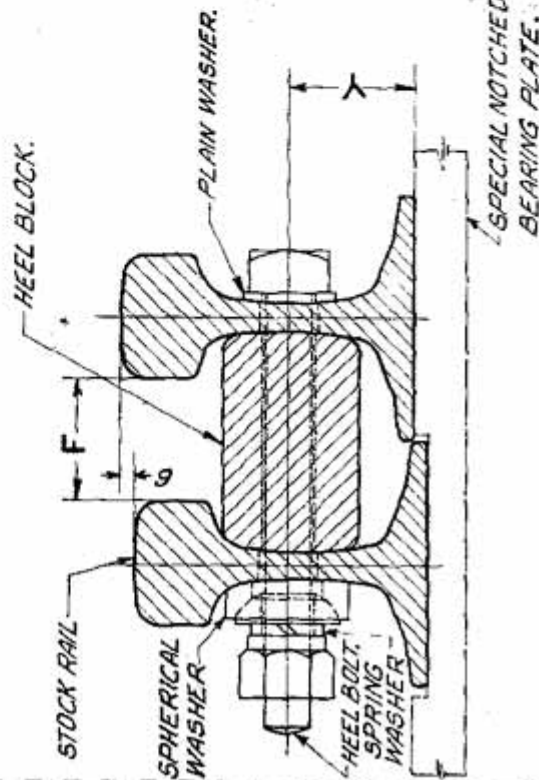
TABLE OF DIMENSIONS.

RAIL SECTION	ASSEMBLY DRG. NO.	DIMENSIONS (in mm.)																						
		A	B	C	D	E	F	G	H	J	K	L	M	N	P	Q	R	S	T	U	V	W	X	Y
52 Kg	TA 20215	3063	1000	1150	1187	1777	66	386	511	636	761	885	1010	1135	560	480	510	540	560	590	630	530	6528	67
90 R.	TA 20237	3047	950	1110	1293	1804	66.3	387	512	636	761	886	1011	1136	610	530	530	530	560	640	640	544	6436	60



ENLARGED PLAN OF L.H. HEEL.

SWITCH ANGLE.....1'-6"-0"
DIVERGENCE AT HEEL
OF SWITCH.....1/33
THROW AT TOE
OF SWITCH.....115



SECTION ON Z.Z.
(AT HEEL)

TABLE OF DIMENSIONS.

RAIL ASSEMBLY SECTION DRG: N ^o	DIMENSIONS (in mm)																						
	A	B	C	D	E	F	G	H	J	K	L	M	N	P	Q	R	S	T	U	V	W	X	Y
52kg TA 20216	3063	1000	1150	1187	1777	66	386	511	636	761	885	1010	1135	560	480	510	540	560	590	630	595	6528	67
90R TA 20236	3047	950	1110	1293	1804	66.3	387	512	636	761	886	1011	1136	610	530	530	530	530	560	640	544	6426	60

TYPICAL 1 IN 12 OBTUSE CROSSING FOR MOVABLE SWITCH
DIAMONDS WITH DOUBLE SLIPS M. G.

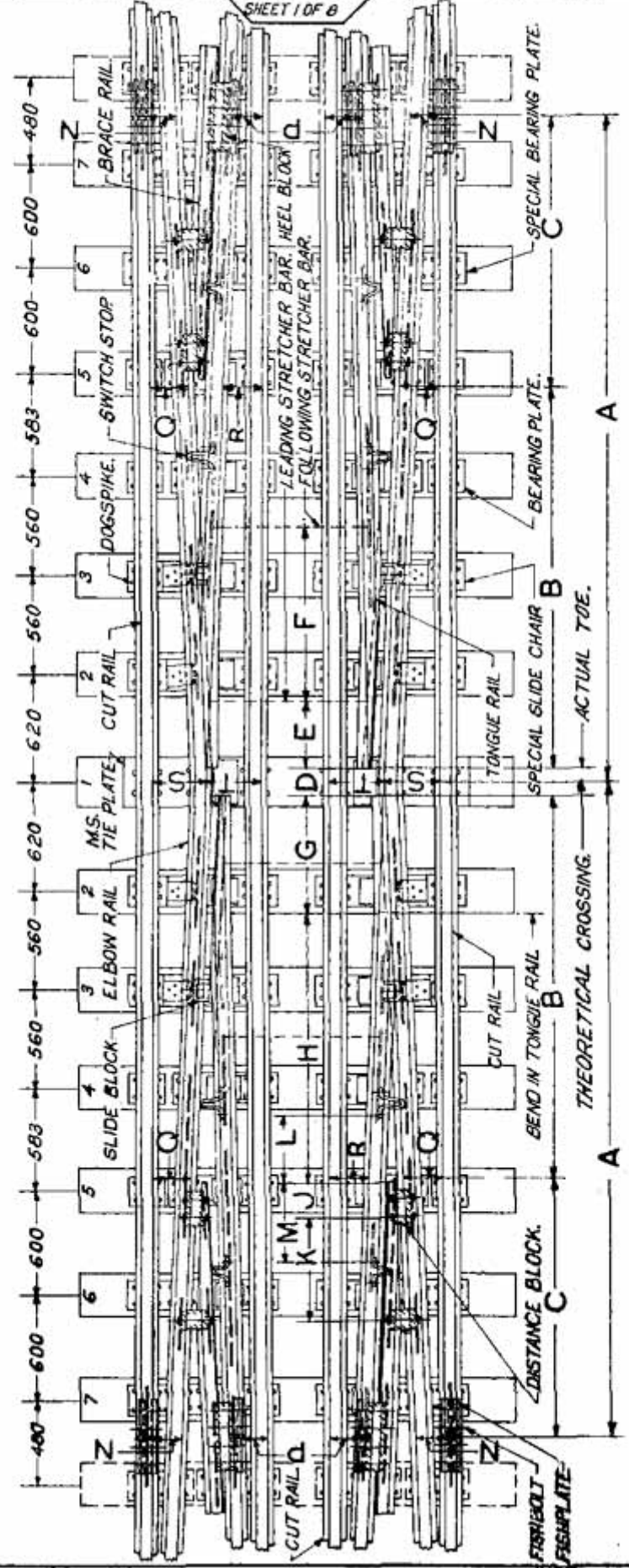


TABLE OF DIMENSIONS.

RAIL SECTION	ASSEMBLY DRG. NO.	DIMENSIONS (mm)																	
		A	B	C	D	E	F	G	H	J	K	L	M	N	P	Q	R	S	T
75 R.	TA 20492	3759.5	2181	1500	157	380	990	666	1552	200	600	394	437	166.5	166.5	220.5	220.5	309	311

TYPICAL INTERMEDIATE PORTION FOR 1 IN 12 MOVABLE

SWITCH DIAMONDS M. G.

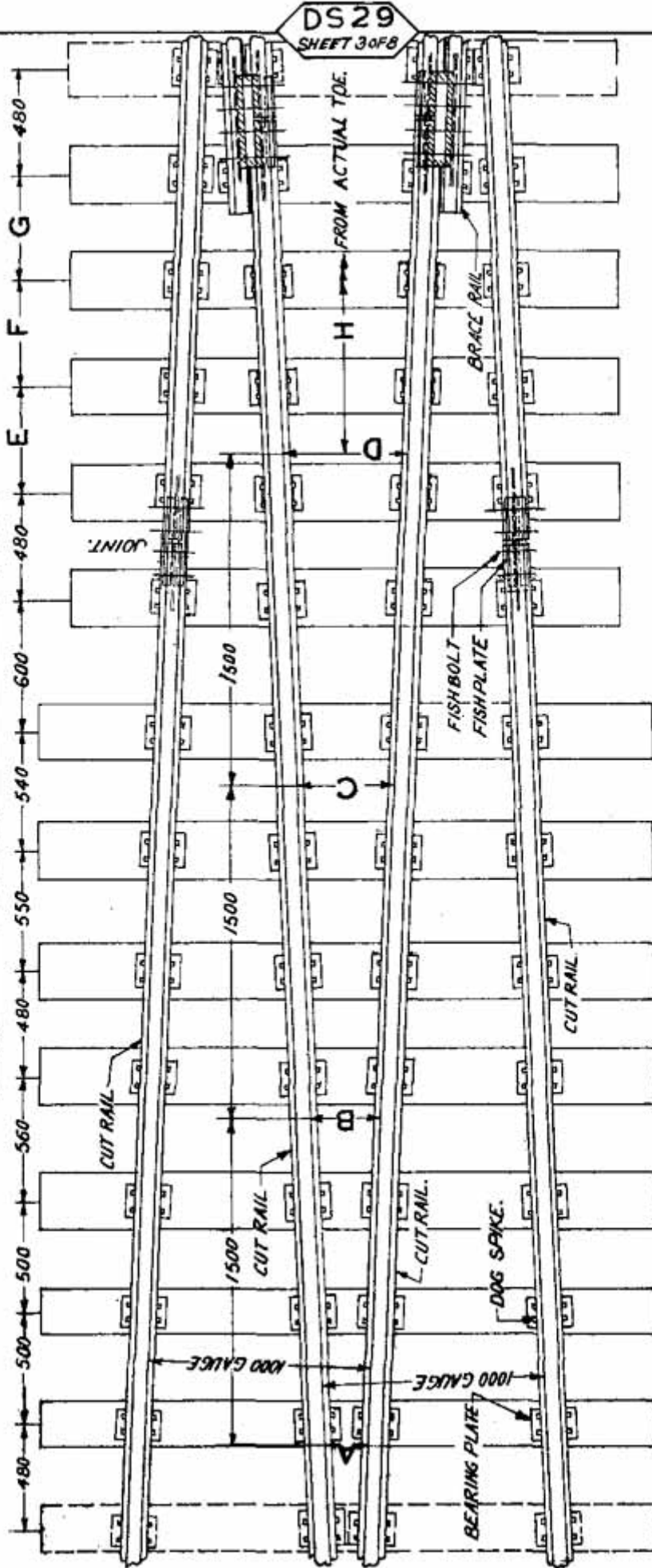


TABLE OF DIMENSIONS.

RAIL SECTION	ASSEMBLY DRS. No.	DIMENSIONS (mm)							
		A	B	C	D	E	F	G	H
75R	TA 20 489	189	314	438.5	563.5	480	480	480	5181

WQMD2

TYPICAL INTERMEDIATE PORTION FOR 1 IN 12 MOVABLE SWITCH DIAMONDS WITH SINGLE SLIPS M.G.

