

**MANUAL OF INSTRUCTIONS ON LONG WELDED RAILS (1996)**

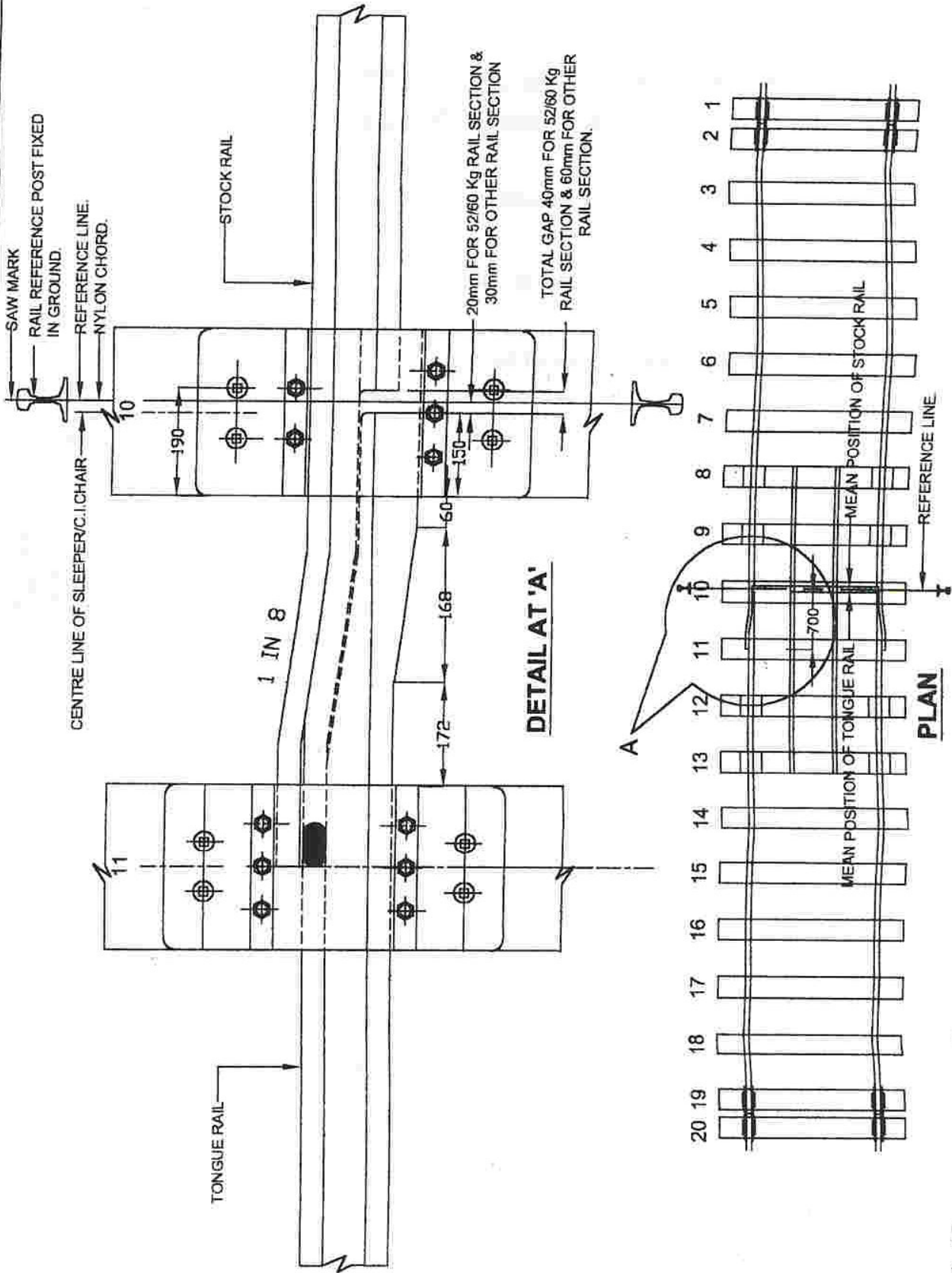
**ADDENDUM & CORRIGENDUM SLIP NO. 10**

1. Fig. 5.6 may be substituted by modified Fig. 5.6 as enclosed herewith.
2. Para 6.4.1 (i) (c) may be replaced as under:

“When tip of tongue rail/corner of Stock Rail crosses the reference line.”

SETTING OF GAP AT SEJ  
AT DESTRESSING TEMPERATURE(td)

Fig 5.6



**NOTE:-** i) REFERENCE LINE SHALL BE KEPT AT 20mm FROM CENTRAL BOLT OF C.I. CHAIR FOR 52 Kg/60 Kg RAIL SECTION & 30mm FOR OTHER RAIL SECTION.  
ii) AT THE TIME OF INITIAL LAYING/DESTRESSING, THE TIP OF TONGUE RAIL SHOULD CONcide WITH MID POINT OF CENTRAL BOLTS OF C.I. CHAIR.